



---

# UL 621

## STANDARD FOR SAFETY

### Ice Cream Makers

[ULNORM.COM](https://www.ulnorm.com) : Click to view the full PDF of UL 621 2020

[ULNORM.COM](https://www.ulnorm.com) : Click to view the full PDF of UL 621 2020

UL Standard for Safety for Ice Cream Makers, UL 621

Seventh Edition, Dated May 7, 2010

### **SUMMARY OF TOPICS**

***This revision to ANSI/UL 621 dated September 16, 2020 includes the withdrawal and replacement of UL 508C with UL 61800-5-1; [Table 17.2](#), [19.2.2](#), and [19.4.1](#)***

Text that has been changed in any manner or impacted by UL's electronic publishing system is marked with a vertical line in the margin.

The revised requirements are substantially in accordance with Proposal(s) on this subject dated July 17, 2020.

All rights reserved. No part of this publication may be reproduced, stored in a retrieval system, or transmitted in any form by any means, electronic, mechanical photocopying, recording, or otherwise without prior permission of UL.

UL provides this Standard "as is" without warranty of any kind, either expressed or implied, including but not limited to, the implied warranties of merchantability or fitness for any purpose.

In no event will UL be liable for any special, incidental, consequential, indirect or similar damages, including loss of profits, lost savings, loss of data, or any other damages arising out of the use of or the inability to use this Standard, even if UL or an authorized UL representative has been advised of the possibility of such damage. In no event shall UL's liability for any damage ever exceed the price paid for this Standard, regardless of the form of the claim.

Users of the electronic versions of UL's Standards for Safety agree to defend, indemnify, and hold UL harmless from and against any loss, expense, liability, damage, claim, or judgment (including reasonable attorney's fees) resulting from any error or deviation introduced while purchaser is storing an electronic Standard on the purchaser's computer system.

No Text on This Page

[ULNORM.COM](https://ulnorm.com) : Click to view the full PDF of UL 621 2020

**MAY 7, 2010**  
(Title Page Reprinted: September 16, 2020)



**ANSI/UL 621-2020**

1

## **UL 621**

### **Standard for Ice Cream Makers**

The First and Second editions were titled Ice Cream Freezers and Soda Fountain Units.

First Edition – January, 1961  
Second Edition – April, 1973  
Third Edition – April, 1977  
Fourth Edition – April, 1986  
Fifth Edition – March, 1993  
Sixth Edition – May, 2005

### **Seventh Edition**

**May 7, 2010**

This ANSI/UL Standard for Safety consists of the Seventh Edition including revisions through September 16, 2020.

The most recent designation of ANSI/UL 621 as an American National Standard (ANSI) occurred on September 9, 2020. ANSI approval for a standard does not include the Cover Page, Transmittal Pages, and Title Page.

The Department of Defense (DoD) has adopted UL 621 on February 25, 1992. The publication of revised pages or a new edition of this Standard will not invalidate the DoD adoption.

Comments or proposals for revisions on any part of the Standard may be submitted to UL at any time. Proposals should be submitted via a Proposal Request in UL's On-Line Collaborative Standards Development System (CSDS) at <https://csds.ul.com>.

UL's Standards for Safety are copyrighted by UL. Neither a printed nor electronic copy of a Standard should be altered in any way. All of UL's Standards and all copyrights, ownerships, and rights regarding those Standards shall remain the sole and exclusive property of UL.

**COPYRIGHT © 2020 UNDERWRITERS LABORATORIES INC.**

No Text on This Page

[ULNORM.COM](http://ULNORM.COM) : Click to view the full PDF of UL 621 2020

**CONTENTS**

**INTRODUCTION**

1 Scope .....7

2 General .....7

    2.1 Terminology .....7

    2.2 Components .....7

    2.3 Units of measurement .....7

    2.4 Undated references .....7

3 Glossary .....7

3A Definitions Relating To Classes Of Control Functions .....9

**CONSTRUCTION**

4 General .....9

5 Assembly .....10

    5.1 General .....10

    5.2 Pressurized product system .....11

    5.3 Mechanical protection .....11

6 Accessibility Of Uninsulated Live Parts, Film-Coated Wire, Moving And Hot Parts .....12

7 Accessories .....19

8 Enclosures .....20

    8.1 General .....20

    8.2 Doors and covers .....22

9 Nonmetallic Materials .....23

    9.1 General .....23

    9.2 Classification .....24

    9.3 Application .....24

10 Field Supply Connections .....26

    10.1 General .....26

    10.2 Permanently connected ice cream makers .....26

    10.3 Terminals and leads .....27

    10.4 Cord-connected ice cream makers .....28

11 Internal Wiring And Wiring Methods .....31

    11.1 General .....31

    11.2 High voltage circuits .....32

    11.3 Low voltage circuits .....33

    11.4 Wiring method .....34

    11.5 Short circuit protection .....35

12 Secondary Circuits .....36

    12.1 General .....36

    12.2 Class 2 circuits .....36

    12.3 Limited voltage/current circuits .....36

13 Separation Of Circuits .....38

14 Bonding For Grounding .....38

**ELECTRICAL COMPONENTS**

15 Current-Carrying Parts .....41

16 Insulating Material .....41

17 Switches and Controllers .....42

18 Motors And Motor Overload Protection .....48

19 Motors .....50

    19.1 General .....50

19.2	Protection of single-phase nonhermetic motors .....	50
19.3	Protection of three-phase motors .....	51
19.4	Protection of hermetic refrigerant motor-compressors .....	51
20	Fuseholders .....	52
20A	Fuses, Circuit Breakers, and Supplementary Protectors .....	53
21	Incandescent Lighting Systems .....	53
22	Receptacles .....	54
23	Receptacle And Lighting Circuit Overcurrent Protection .....	54
24	Lampholders .....	54
25	Valves And Solenoids .....	54
26	Capacitors .....	55
26A	Outlet Boxes, Electrical Cable, Conduit and Tubing .....	56
26B	Electromagnetic Interference Filters .....	56
26C	Relays and Contactors .....	56
26D	Optical Isolators and Semiconductor Devices .....	56
26E	Terminal Blocks .....	57
26F	Printed-Wiring Boards .....	57
27	Transformer Protection .....	57
27.1	High-voltage transformers .....	57
27.2	Overcurrent protective devices .....	59
28	High-Voltage Control Circuit Conductor Overcurrent Protection .....	59
28.1	General .....	59
28.2	Direct-connected, high-voltage control circuits .....	59
28.3	Tapped high-voltage control circuits .....	60
28.4	Overcurrent protective devices .....	61
 <b>SPACINGS</b>		
29	High-Voltage Circuits .....	61
30	Low-Voltage Circuits .....	63
31	Alternate Spacings – Clearances and Creepage Distances .....	63
 <b>REFRIGERATION SYSTEM</b>		
32	Refrigerant .....	64
33	Pumpdown Capacity .....	64
34	Refrigerant Tubing And Fittings .....	64
35	Refrigerant-Containing Parts .....	66
36	Pressure-Limiting Devices .....	66
37	Pressure Relief .....	66
37.1	General .....	66
37.2	Relief valves .....	67
37.3	Fusible plugs or rupture members .....	67
 <b>PERFORMANCE</b>		
38	Instrumentation .....	68
38.1	Temperature measurements .....	68
38.2	Pressure measurements .....	68
39	Test Voltage .....	69
40	Leakage Current Test – Cord-Connected Ice Cream Makers .....	69
41	Input Test .....	72
42	Starting Test .....	72
43	Temperature And Pressure Test .....	73
44	Dielectric Voltage-Withstand Test .....	76

45	Condenser Fan Motor Failure Test.....	77
46	Condenser Water Failure Test .....	78
47	Overflow Test.....	78
48	Stability Test .....	78
49	Burnout Tests – Components .....	79
50	Burnout Test – High-Voltage Transformers .....	80
51	Overload Test – High-Voltage Transformers .....	80
52	Overvoltage And Undervoltage Tests .....	81
53	Current Overload Test – Bonding Conductors and Connections .....	81
54	Insulation Resistance Test .....	82
55	Limited Short-Circuit Test.....	82
	55.1 General.....	82
	55.2 Motor overload protective devices.....	83
	55.3 Bonding conductors and connections .....	84
	55.4 Motor circuit conductors and connections .....	84
56	Compressor Protective Device Tests.....	84
57	Strength Tests – Pressure Containing Components .....	85
	57.1 Refrigeration system.....	85
58	Start-To-Discharge Test .....	87
59	Component Restraint Test.....	87
60	Fastener Strength Test .....	88
61	Burnout Test – Impedance Protected Motors .....	88
62	Tests on Nonmetallic Materials .....	89
63	Strain Relief Test.....	90
63A	Component Failure Test.....	90

**MANUFACTURING AND PRODUCTION TESTS**

64	Pressure Tests .....	91
65	Production-Line Dielectric Voltage-Withstand Tests.....	92
66	Production-Line Grounding Continuity Tests.....	94

**MARKING**

67	General .....	94
68	Permanently Connected Ice Cream Makers .....	97
69	Cord-Connected Ice Cream Makers.....	102

**INSTRUCTIONS**

70	Installation and Operating Instructions .....	102
----	---	-----

**SUPPLEMENT SA – UL 60335-1 BASED REQUIREMENTS FOR THE EVALUATION OF ELECTRONIC CIRCUITS**

**INTRODUCTION**

SA1	Scope .....	103
SA2	General.....	103
SA3	Glossary .....	103

**CONSTRUCTION**

SA4	Components.....	104
	SA4.1 Capacitors.....	104

SA4.2	Isolation devices .....	104
SA4.3	Switch mode power supplies .....	105
SA4.4	Temperature sensing, thermistor devices .....	105
SA5	Identification of Safety Critical Circuit Functions .....	105
SA5.1	General .....	105
SA5.2	Protective electronic circuits.....	105
SA5.3	Operating circuits that mitigate a dangerous malfunction of the appliance.....	106
SA6	Evaluation of the Different Types of Electronic Circuits.....	106
SA6.1	All types of circuits .....	106
SA7	Circuits That Provide Safety Critical Functions .....	106

## PERFORMANCE

SA8	General Conditions for the Tests .....	107
SA8.1	Details.....	107
SA8.2	Intentionally weak parts .....	107
SA8.3	Test results determined by overcurrent protection operation .....	107
SA9	Low-Power Circuits .....	108
SA9.1	Low-power circuit determination.....	108
SA10	Abnormal Operation and Fault Tests.....	109
SA11	Programmable Component Reduced Supply Voltage Test.....	110
SA12	Electromagnetic Compatibility (EMC) Requirements – Immunity.....	111

ULNORM.COM : Click to view the full PDF of UL 621 2020

## INTRODUCTION

### 1 Scope

1.1 These requirements cover unitary ice cream makers designed for connection to alternating current circuits rated not more than 600 volts. For the purposes of this standard, ice cream makers include equipment for preparing products such as hard ice cream, soft serve ice cream, milk shakes, and sherbets and may include means for dispensing the product directly into containers.

1.2 Ice cream makers covered by these requirements employ sealed (hermetic type) motor compressors and air-cooled or water-cooled condensers.

1.3 These ice cream makers are intended to be installed in accordance with the National Electrical Code, NFPA 70, and the Safety Standard for Refrigeration Systems, ASHRAE 15.

### 2 General

#### 2.1 Terminology

2.1.1 The term “ice cream maker” refers to any equipment covered by this standard unless specifically noted otherwise.

#### 2.2 Components

2.2.1 *Deleted.*

2.2.2 *Deleted.*

2.2.3 *Deleted.*

2.2.4 *Deleted.*

#### 2.3 Units of measurement

2.3.1 Values stated without parentheses are the requirement. Values in parentheses are explanatory or approximate information.

#### 2.4 Undated references

2.4.1 Any undated reference to a code or standard appearing in the requirements of this standard shall be interpreted as referring to the latest edition of that code or standard.

### 3 Glossary

3.1 For the purpose of these requirements, the following definitions apply.

3.2 **ACCESSORY** – An optional electrical device or other component, intended for installation in or connection to an ice cream maker for the purpose of modifying or supplementing the functions of the ice cream maker. It may be factory installed or intended for installation by the user or service personnel.

3.2.1 CAPILLARY TUBE – Device made of tubing with an outer diameter of less than 3/16 in. (4.7 mm) and used to reduce the pressure of the refrigerant between the condenser and evaporator. It also regulates the refrigerant flow.

### 3.3 CIRCUITS, ELECTRICAL:

a) High-Voltage – A circuit involving a potential of not more than 600 volts and having circuit characteristics in excess of those of a low-voltage circuit.

b) Low-Voltage (Class 2) – A circuit involving a potential of not more than 30 volts alternating current, 42.4 volts peak or 60 volts direct current, and supplied by:

1) A primary battery,

2) A standard Class 2 National Electrical Code, NFPA 70, transformer, or

3) A combination of a transformer and fixed impedance that, as a unit, complies with all performance requirements for a Class 2 transformer.

3.3.1 COMPONENT – A device or fabricated part of the appliance covered by the scope of a safety standard dedicated to the purpose. When incorporated in an appliance, equipment otherwise typically field installed (e. g. luminaire) is considered to be a component. Unless otherwise specified, materials that compose a device or fabricated part, such as thermoplastic or copper, are not considered components.

3.3.2 CONTROL, TYPE 1 ACTION – The actuation of an automatic control for which the manufacturing deviation and the drift (tolerance before and after certain conditions) of its operating value, operating time, or operating sequence has not been declared and tested under this standard.

3.3.3 CONTROL, TYPE 2 ACTION – The actuation of an automatic control for which the manufacturing deviation and the drift (tolerance before and after certain conditions) of its operating value, operating time, or operating sequence have been declared and tested under this standard.

3.4 ENCLOSURE– That part of an appliance that by itself or in conjunction with barriers:

a) Renders inaccessible all or any part of the unit that may otherwise present risk of electric shock,

b) Reduces the risk of contact with parts that may cause injury to persons, and/or,

c) Prevents propagation of flame initiated by electrical disturbances occurring within the unit.

A unit cabinet that serves as sole enclosure for ignition sources is considered to be a group 1 enclosure. Separate enclosures located within or mounted on the outer surface of the unit cabinet are considered group 1 enclosures if they serve as a sole enclosure for ignition sources.

3.5 FUNCTIONAL/STRUCTURAL PART – A part used to maintain the intended relative physical position of fixed or moving parts, or maintain the integrity of the structure. A cabinet liner that supports an electrical component is considered to be a functional part.

3.6 NONFUNCTIONAL PART – A part, such as thermal insulation or decorative material, that does not serve as electrical insulation or to support or enclose electrical components, maintain electric spacings, or protect against injury to persons.

3.7 OPERATING CONTROL – A control intended to start, regulate, or operate the appliance during normal operation. An example would be a thermostat or temperature controller.

3.8 PROTECTIVE (SAFETY) CONTROL – A control intended to prevent the risk of electric shock, fire, or injury to persons, typically during abnormal operation of the appliance. Examples would be a pressure limiting control (pressure cut-out) or a temperature limiting control (thermal cut-out).

3.9 SELF-CONTAINED ICE CREAM MAKER – Unitary equipment consisting of a complete factory-assembled and factory-tested refrigerating system in which all of the refrigerant-containing parts are permanently connected at the factory.

3.10 ULTIMATE STRENGTH – The highest stress level that a refrigerant-containing component can tolerate without rupture.

3.11 UNITARY ICE CREAM MAKER – Equipment consisting of a complete factory-assembled and factory-tested refrigerating system comprising one or more assemblies that:

- a) May be shipped separately, but
- b) Are intended to be used together.

### 3A Definitions Relating To Classes Of Control Functions

3A.1 For the evaluation of protective measures for fault tolerance and avoidance of hazards it is necessary to classify control functions with regard to their fault behavior.

3A.2 At the classification of control functions their integration into the complete safety concept of the appliance shall be taken into account.

3A.3 A control function consists of the entire loop beginning with the sensing means through the processing circuitry (hardware and software if used) and including the actuator drive.

3A.4 For the purpose of evaluating the design of a control function, present requirements recognize three distinct classes:

3A.5 CLASS A CONTROL FUNCTION – Control function which is not intended to be relied upon for the safety of the application. Examples include room thermostats and temperature control.

3A.6 CLASS B CONTROL FUNCTION – Control function which is intended to prevent an unsafe state of the appliance. Failure of the control function will not lead directly to a hazardous situation. Examples include temperature limiting control (thermal cut-out) and pressure limiting control (pressure cut-out).

NOTE This equates to Software Class 1 in UL 1998.

3A.7 CLASS C CONTROL FUNCTION – Control functions which is intended to prevent special hazards such as explosion or whose failure could directly cause a hazard in the appliance. Examples include burner control systems and thermal cut-outs for closed water systems (without vent protection).

## CONSTRUCTION

### 4 General

4.1 Ferrous metal parts used to support or retain electrical components in position shall be protected against corrosion by metallic or nonmetallic coatings, such as plating or painting.

*Exception: This requirement does not apply to parts, such as washers, screws, bolts, and the like, where corrosion of such unprotected parts would not affect compliance with the requirements of this standard.*

4.2 Lead base paints, cadmium, antimony, bismuth, and similar toxic materials shall not be employed on parts that come in contact with the ingredients or end-product of an ice cream maker.

4.3 A component shall:

- a) Comply with the safety standard covering that component;
- b) Be used in accordance with its rating(s) established for the intended conditions of use;
- c) Be used within its established use limitations or conditions of acceptability;
- d) Comply with the applicable requirements of this end product standard; and
- e) Not contain mercury.

*Exception: A component of a product covered by this standard is not required to comply with a specific component requirement that:*

- a) Involves a feature or characteristic not required in the application of the component in the product, or*
- b) Is superseded by a requirement in this standard, or*
- c) Is separately investigated when forming part of another component, provided the component is used within its established ratings and limitations.*

4.4 A component that is also required to perform other necessary functions, such as overcurrent protection, ground-fault circuit interruption, surge suppression, any other similar functions, or any combination thereof, shall comply additionally with the requirements of the applicable standard(s) covering products that provide those functions.

*Exception: Where these other functions are not required for the application and not identified as part of markings, instructions, or packaging for the appliance, the additional component standard(s) need not be applied.*

## **5 Assembly**

### **5.1 General**

5.1.1 If an ice cream maker is provided in more than one assembly, the separate assemblies shall be constructed to be used together, and the requirements of this standard are based on the use of matched assemblies. Interconnection of the assemblies shall result in a complete factory-charged refrigerating system.

5.1.2 An ice cream maker incorporating a condensing unit of the pull-out type shall be constructed so that the condensing unit can be pulled out and reinserted without kinking or otherwise damaging the refrigerant tubing; and without pinching, abrading, or stressing electrical wires and cords.

5.1.3 An ice cream maker shall be assembled so that removal and replacement of tanks and containers, replenishment of the product, and the like, will not result in damage to electrical components and wiring, or to refrigerant-containing components.

5.1.4 An ice cream maker having provision for the storage of product cylinders or the like shall be provided with means for securely retaining the cylinders in position.

## 5.2 Pressurized product system

5.2.1 All parts of a product system pressurized by a pump or by compressed gas provided with an ice cream maker shall comply with the requirement of [57.1.9](#) or [57.1.10](#).

5.2.2 A gas pressure regulator or reducing valve shall:

- a) Comply with the requirements of [4.3](#), or
- b) Be tested for the application.

5.2.3 A pressure-relief valve shall be installed in the gas pressurized product system of the ice cream maker. There shall be no shutoff valve between the relief valve and any parts of the system under pressure. See [57.1.9](#).

*Exception: A pressure relief valve is not required provided:*

- a) The system consists only of tubing, or hose, or both, with or without dispensing valves,
- b) The ice cream maker is marked in accordance with [67.24](#), and
- c) The system complies with the strength requirement of [57.1.9](#).

5.2.4 Pressure relief devices in a pressurized product system shall be positioned, located, or baffled so that moisture discharged through the relief device will not wet uninsulated live parts.

## 5.3 Mechanical protection

5.3.1 A slideout product storage component, such as a drawer or shelf shall be restrained to prevent its being unintentionally pulled free of supporting means. See Component Restraint Test, Section [59](#).

5.3.2 Electrical components shall be located or enclosed so that live parts will not be wetted by liquids due to accumulation, overflow, splashing, leakage, or cleaning.

5.3.3 A drippage or drain pan shall be constructed and located so that overflow due to a blocked drain will not wet live parts or film-coated wire.

5.3.4 An overflow spout, drain hole, cutout, or the like, in the drippage or drain pan may be acceptable for preventing dripping of liquid on electrical parts. The Overflow Test, Section [47](#), is to be conducted if it is not evident that the ice cream maker complies with the requirements of [5.3.3](#).

5.3.5 A switch, lampholder, an attachment-plug receptacle, or similar component, shall be secured in position and shall be prevented from rotating. See [5.3.6](#).

*Exception No. 1: The requirement that a switch be prevented from rotating will be waived upon compliance with all of the following conditions:*

- a) The switch shall be of a plunger or other type that does not tend to rotate when operated. A toggle switch is considered to be subject to forces that tend to rotate the switch during the operation of the switch.
- b) Means of mounting the switch make it unlikely that operation of the switch will loosen it.
- c) Electrical spacings shall not be reduced below the minimum required values if the switch rotates.

d) Operation of the switch is by mechanical means rather than direct contact by persons.

*Exception No. 2: A lampholder of a type in which the lamp cannot be replaced, such as a neon pilot or indicator light in which the lamp is sealed in a nonremovable jewel, need not be prevented from turning if rotation cannot reduce electrical spacings below the minimum acceptable values. See Spacings, Sections [29](#) and [30](#).*

5.3.6 The means for preventing rotation mentioned in [5.3.5](#) is to consist of more than friction between surfaces. A toothed lock washer that provides both spring takeup and an interference lock is acceptable as means for preventing a small stem-mounted switch or other device intended for single-hole mounting from rotating.

5.3.7 An uninsulated current-carrying part, or a part that supports a live part, shall be secured to the base or mounting surface so that it will be prevented from turning or shifting in position if such motion may result in a reduction of electrical spacings below the minimum acceptable values. See Spacings, Sections [29](#) and [30](#). Friction between surfaces is not acceptable as a means to prevent shifting or turning of a live part, but a lock washer as described in [5.3.6](#) is acceptable.

5.3.8 Flammable or electrically conductive thermal or acoustical insulation shall not contact uninsulated live parts. See Insulation Resistance Test, Section [54](#).

## 6 Accessibility Of Uninsulated Live Parts, Film-Coated Wire, Moving And Hot Parts

6.1 Uninsulated live parts, film-coated wire, moving parts, and hot parts shall be guarded or enclosed. Except as indicated in [6.2](#) or [6.4](#), such parts are considered to be enclosed when:

- a) An opening has a minor dimension (see [6.7](#)) less than 1 inch (25.4 mm), and such a part or wire is not contacted by the probe illustrated in [Figure 6.1](#), and
- b) An opening has a minor dimension of 1 inch (25.4 mm) or more, such a part or wire is spaced from the opening as specified in [Table 6.1](#).

*Exception: A product fill or discharge opening located in the front of a dispensing type ice cream maker is considered to comply when:*

- a) *The diameter of the opening is less than 2-1/2 inches (63.5 mm) or the maximum diagonal dimension of the opening is less than 3 inches (76.2 mm),*
- b) *The distance from a moving part that can cause injury to persons to the nearest edge of the plane of the opening is at least 4 inches (101.6 mm),*
- c) *The opening is closed except when filling or discharging the product, and*
- d) *A warning marking, as described in [67.18](#), is located on the ice cream maker.*

6.2 Moving parts that are necessarily exposed to perform the work function are not required to be enclosed but, where necessary, shall be provided with guarding. The degree of protection shall be based upon the construction and intended use of the machine.

6.3 In accordance with [6.2](#) the extent of guarding shall be based on the following factors:

- a) The degree of exposure necessary to perform the intended function;
- b) The sharpness of the moving part;
- c) The likelihood of unintentional contact with the moving part;

d) The speed of the moving part; and

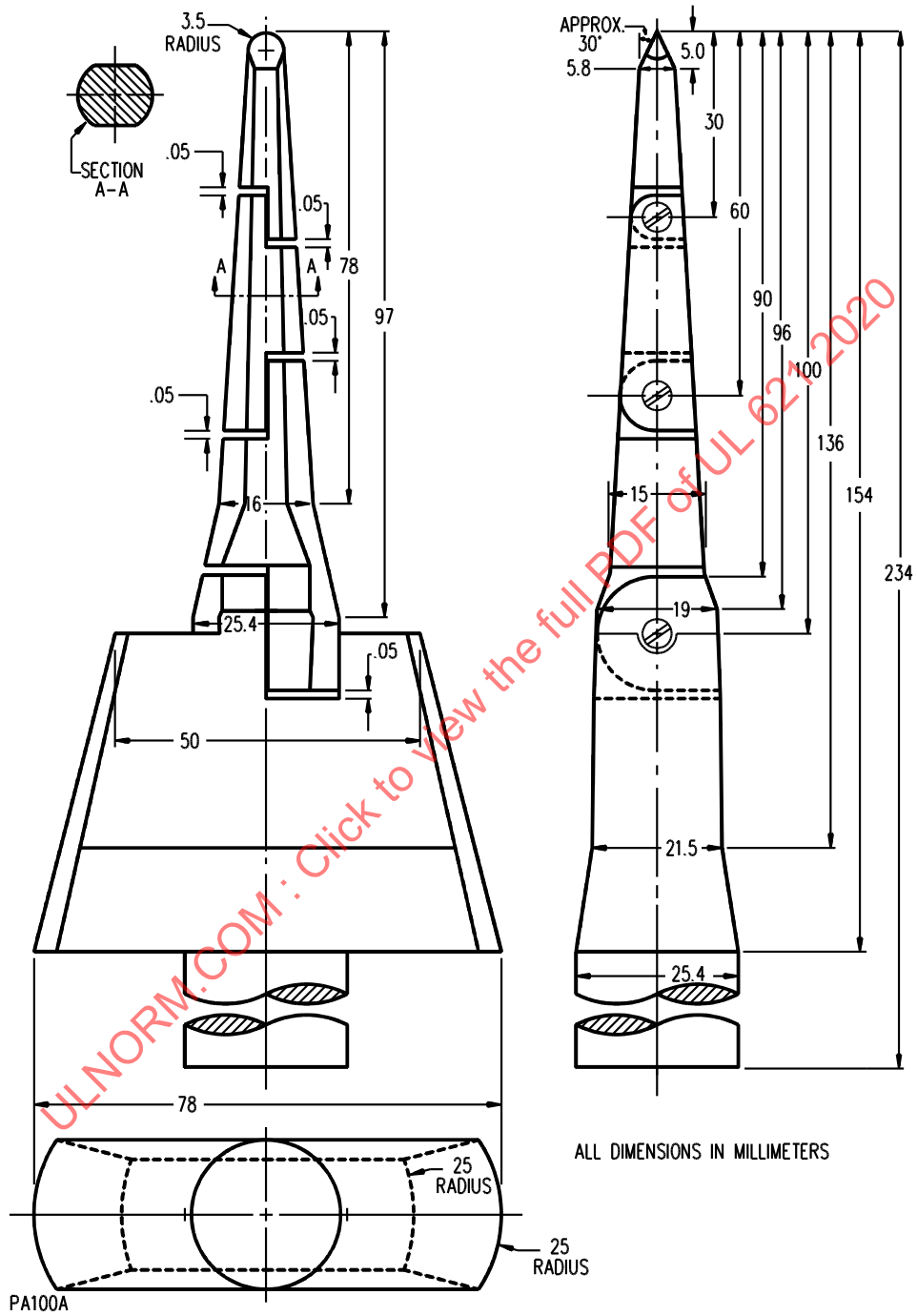
e) The risk:

- 1) That a part of the body could be endangered; or
- 2) That clothing could be entangled, resulting in injury to persons.

The above factors are to be considered with respect to both intended operation and reasonable foreseeable misuse of the machine.

ULNORM.COM : Click to view the full PDF of UL 621 2020

Figure 6.1  
Articulate probe with web stop



**Table 6.1**  
**Minimum acceptable distance from an opening to a part that may involve a risk of electric shock or injury to persons**

Minor dimension <sup>a</sup> of opening,		Minimum distance from opening to part,	
inches	(mm) <sup>b</sup>	inches	(mm) <sup>b</sup>
3/4 <sup>c</sup>	(19.1)	4-1/2	(114.0)
1 <sup>c</sup>	(25.4)	6-1/2	(165.0)
1-1/4	(31.8)	8-1/2	(190.0)
1-1/2	(38.1)	10-1/2	(267.0)
2 <sup>e</sup>	(50.8)	14-1/2	(388.0)
2-1/4 <sup>d</sup>	(57.2)	16-1/2	(419.0)
2-1/2 <sup>d</sup>	(63.5)	18-1/2	(470.0)
2-3/4 <sup>d</sup>	(69.9)	20-1/2	(521.0)
3 <sup>d</sup>	(76.2)	22-1/2	(572.0)
Over 2 <sup>e</sup>	(over 50.8)	30	(762.0)

<sup>a</sup> See 6.6.  
<sup>b</sup> For an opening between two of the values shown, the distance from the opening to the part shall be not less than that found by interpolation between the corresponding values shown in the applicable column.  
<sup>c</sup> Any dimensions less than 1 inch (25.4 mm) applies to a motor only.  
<sup>d</sup> These values apply to openings at the base of the ice cream makers where the upper edge of the opening is less than 8 inches (203 mm) above the floor. The ice cream maker shall be in its intended operating position.  
<sup>e</sup> More than 2 inches (50.8 mm), but not more than 3 inches (76.2 mm).

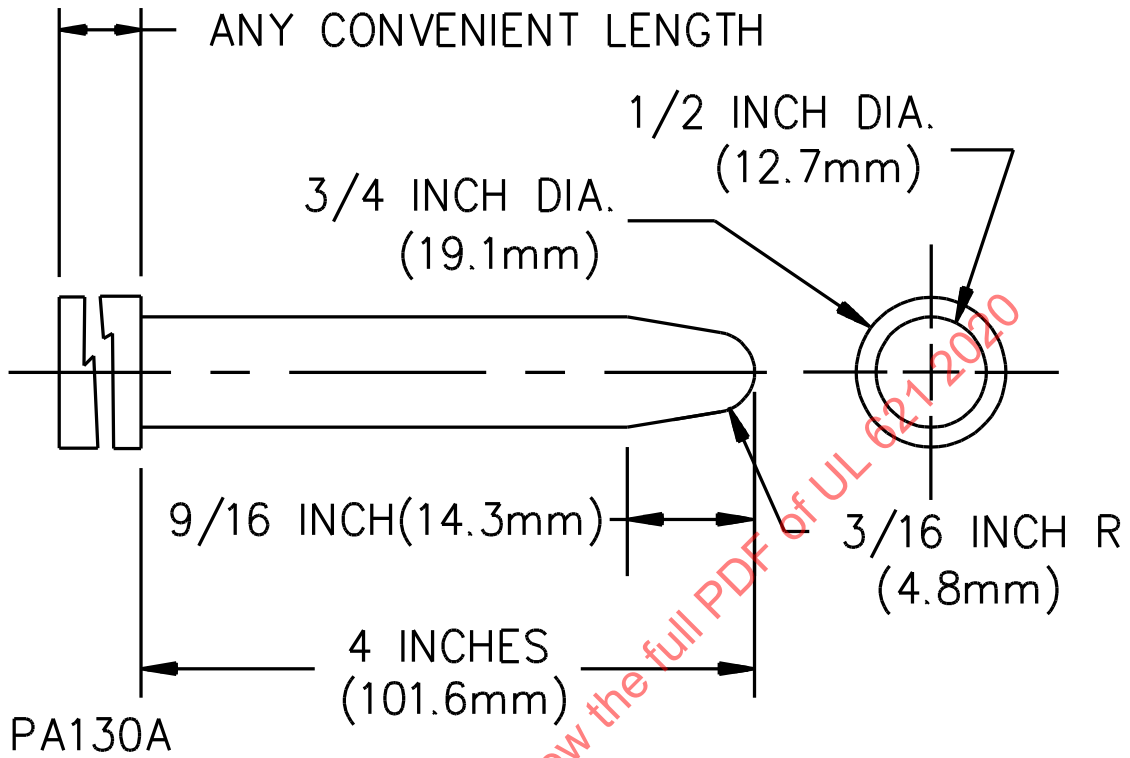
6.4 With regards to an integral enclosure of a motor:

a) An opening that has a minor dimension (see 6.7) less than 3/4 inch (19.1 mm) is acceptable if:

- 1) A moving part cannot be contacted by the probe illustrated in Figure 6.2;
- 2) Film-coated wire cannot be contacted by the probe illustrated in Figure 6.3;
- 3) In a directly accessible motor (see 6.8), an uninsulated live part cannot be contacted by the probe illustrated in Figure 6.4; and
- 4) In an indirectly accessible motor (see 6.8), an uninsulated live part cannot be contacted by the probe illustrated in Figure 6.2.

b) An opening that has a minor dimension of 3/4 inch (19.1 mm) or more is acceptable if a part or wire is spaced from the opening as specified in Table 6.1.

Figure 6.2  
Probe for moving parts and uninsulated live parts



ULNORM.COM : Click to view the full PDF of UL 621 2020

Figure 6.3  
Probe for film-coated wire

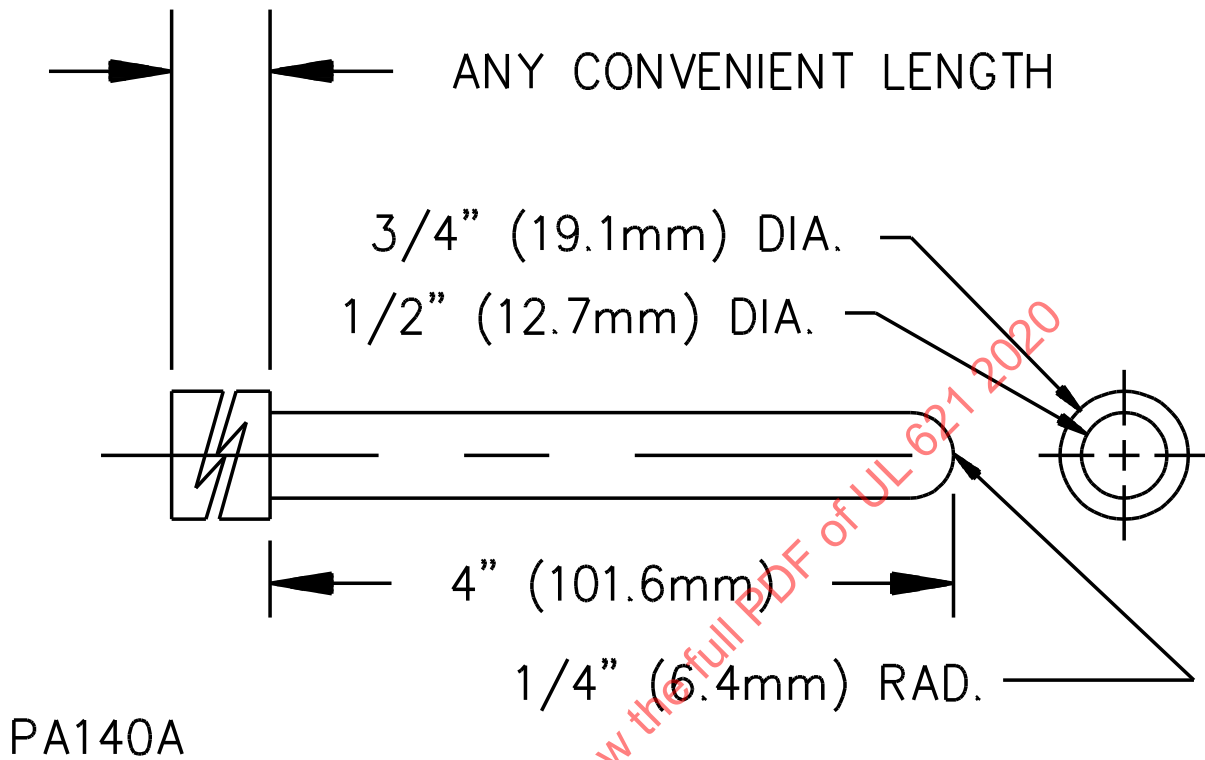
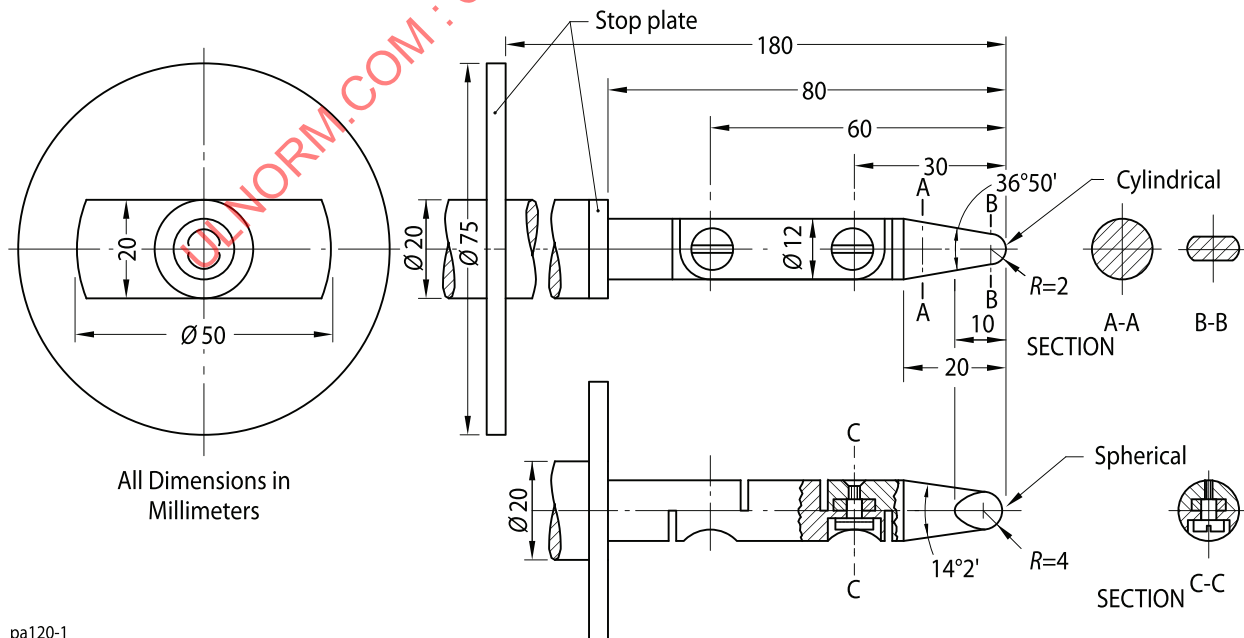


Figure 6.4  
IEC articulate probe



6.5 The probes mentioned in [6.1](#) and [6.4](#) and illustrated in [Figure 6.1](#) – [Figure 6.4](#) shall be applied to any depth that the opening will permit; and shall be rotated or angled before, during, and after insertion through the opening to any position that is necessary to examine the enclosure. The probes illustrated in [Figure 6.1](#) and [Figure 6.4](#) shall be applied in any possible configuration; and, if necessary, the configuration shall be changed after insertion through the opening.

6.6 The probe mentioned in [6.5](#) shall be used as measuring instruments to judge the accessibility provided by an opening, and not as instruments to judge the strength of a material; they shall be applied with the minimum force necessary to determine accessibility.

6.7 With reference to the requirement in [6.1](#) and [6.4](#), the minor dimension of an opening is the diameter of the largest cylindrical probe having a hemispherical tip that can be inserted through the opening with a 2-1/2 pound-force (11.1 N).

*Exception: No force is applied to the probe to determine the minor dimension of openings in a motor.*

6.8 With reference to the requirements in [6.4](#), an indirectly accessible motor is a motor:

- a) That is accessible only by opening or removing a part of the outer enclosure, such as a guard or panel, that can be opened or removed without using a tool, or
- b) That is located at such a height or is otherwise guarded or enclosed so that it is unlikely to be contacted.

A directly accessible motor is a motor:

- a) That can be contacted without opening or removing any part, or
- b) That is located so as to be accessible to contact.

6.9 During the examination of the ice cream maker to determine whether it complies with the requirements in [6.1](#) or [6.4](#), a part of the enclosure that may be opened or removed by the user without using a tool (to attach an accessory, to make an operating adjustment, or for other reasons) is to be opened or removed.

*Exception: A freezing cylinder cover plate, that is, the plate in direct contact with the product chamber need not be opened or removed provided that:*

- a) *Moving parts within the freezing cylinder do not present the risk of injury due to pinching or shearing action with the cover plate removed, such as may occur with counter-rotating mixer blades,*
- b) *Product dispensing openings through the cover plate comply with [6.1](#) with the cover plate in place, and*
- c) *A warning marking, as described in [67.16](#) is located on or adjacent to the freezing cylinder cover plate where it will be visible before removal of the cover plate.*

6.10 With reference to the requirements in [6.1](#) and [6.4](#), insulated brush caps are not required to be additionally enclosed.

6.11 When tested according to the Temperature-Pressure Test, Section [43](#), surfaces that exceed the temperature rise of [Table 43.1](#) D(2) and D(3) shall be guarded as specified in [6.1](#).

6.12 A moving or hot part is not to be considered when determining compliance with [6.1](#) and [6.4](#) if:

- a) The part is unlikely to be contacted through the opening because of the location of fixed components, including baffles, or
- b) The part is made inoperative when exposed, through the use of interlocking devices.

6.13 A live part is not to be considered when determining compliance with [6.1](#) and [6.4](#) if the part is made inoperative when exposed, through the use of interlocking devices.

6.14 Uninsulated high-voltage live parts located inside the enclosure that are likely to be contacted by persons performing operations such as refilling, relamping, replacing fuses, resetting manual-reset devices, oiling motors, or other such intended service operations, shall be located, guarded or enclosed, to reduce the risk of unintentional contact unless tools are required to expose the live part.

## 7 Accessories

7.1 An ice cream maker having provisions for the use of electrical accessories to be attached in the field shall comply with all requirements of this standard with or without the accessory installed.

7.2 Installation of accessories by the user shall be restricted to an arrangement that can be accomplished by means of receptacles and plug-in connectors.

7.3 Installation of accessories by service personnel shall be by means of receptacles, plug-in connectors, insulated wire connectors, or by connection to existing wiring terminals.

7.4 Installation of accessories shall not require the cutting of wiring or the soldering of connections by the installer. Installation shall not require cutting, drilling, or welding either in (1) electrical enclosures or (2) other areas where such operations may result in damage to electrical or refrigeration components and wiring within the enclosure.

7.5 Strain-relief means shall be provided for the wiring in the accessory if there is a possibility of transmitting stress to the terminal conditions during installation. See [10.4.9](#).

7.6 All terminals and wiring intended to be field connected shall be identified on the:

- a) Accessory,
- b) Ice cream maker if connections are made between the accessory and the ice cream maker, and
- c) Wiring diagram.

7.7 The mounting location of the accessory shall be indicated on the ice cream maker.

*Exception: If the mounting location is fixed due to the function of the accessory and arrangement of the ice cream maker, and instructions are provided covering the installation and location for the accessory, the mounting location of the accessory need not be indicated on the ice cream maker.*

7.8 As part of the investigation, accessories are to be trial-installed to determine that their installation is feasible, and that the instructions are detailed and correct.