



UL 365

STANDARD FOR SAFETY

Police Station Connected Burglar Alarm Units and Systems

ULNORM.COM : Click to view the full PDF of UL 365 2018

ULNORM.COM : Click to view the full PDF of UL 365 2018

UL Standard for Safety for Police Station Connected Burglar Alarm Units and Systems, UL 365

Fifth Edition, Dated January 31, 2018

Summary of Topics

The Fifth Edition of the Standard for Police Station Connected Burglar Alarm Units and Systems, UL 365, was issued to expand media to include website.

The revised requirements are substantially in accordance with Proposal(s) on this subject dated October 23, 2015.

All rights reserved. No part of this publication may be reproduced, stored in a retrieval system, or transmitted in any form by any means, electronic, mechanical photocopying, recording, or otherwise without prior permission of UL.

UL provides this Standard "as is" without warranty of any kind, either expressed or implied, including but not limited to, the implied warranties of merchantability or fitness for any purpose.

In no event will UL be liable for any special, incidental, consequential, indirect or similar damages, including loss of profits, lost savings, loss of data, or any other damages arising out of the use of or the inability to use this Standard, even if UL or an authorized UL representative has been advised of the possibility of such damage. In no event shall UL's liability for any damage ever exceed the price paid for this Standard, regardless of the form of the claim.

Users of the electronic versions of UL's Standards for Safety agree to defend, indemnify, and hold UL harmless from and against any loss, expense, liability, damage, claim, or judgment (including reasonable attorney's fees) resulting from any error or deviation introduced while purchaser is storing an electronic Standard on the purchaser's computer system.

ULNORM.COM : Click to view the full PDF of UL 365 2018

No Text on This Page

[ULNORM.COM](#) : Click to view the full PDF of UL 365 2018

JANUARY 31, 2018



1

ANSI/UL 365-2018

UL 365

Standard for Police Station Connected Burglar Alarm Units and Systems

First Edition – March, 1975
Second Edition – July, 1982
Third Edition – June, 1993
Fourth Edition – July, 1997

Fifth Edition

January 31, 2018

This ANSI/UL Standard for Safety consists of the Fifth Edition.

The most recent designation of ANSI/UL 365 as an American National Standard (ANSI) occurred on January 31, 2018. ANSI approval for a standard does not include the Cover Page, Transmittal Pages, and Title Page.

Comments or proposals for revisions on any part of the Standard may be submitted to UL at any time. Proposals should be submitted via a Proposal Request in UL's On-Line Collaborative Standards Development System (CSDS) at <https://csds.ul.com>.

UL's Standards for Safety are copyrighted by UL. Neither a printed nor electronic copy of a Standard should be altered in any way. All of UL's Standards and all copyrights, ownerships, and rights regarding those Standards shall remain the sole and exclusive property of UL.

COPYRIGHT © 2018 UNDERWRITERS LABORATORIES INC.

ULNORM.COM: Click to view the PDF of UL 365 2018

No Text on This Page

ULNORM.COM : Click to view the full PDF of UL 365 2018

CONTENTS

INTRODUCTION

1 Scope9
 2 Terminology10
 3 Components10
 4 Units of Measurement10
 5 Undated References10
 6 Glossary11
 7 Installation and Operating Instructions13
 8 Installation and Operating Instructions Physical Media14

CONSTRUCTION

ASSEMBLY

9 General15
 9.1 Product assembly15
 9.2 Electrical protection15
 10 Protection of Service Personnel20
 11 Enclosures20
 11.1 General20
 11.2 Doors and covers22
 11.3 Enclosure openings22
 11.4 Screens and expanded metal24
 11.5 Cast metal24
 11.6 Sheet metal25
 11.7 Product enclosure mounting28
 11.8 Polymeric materials28
 12 Electric Shock29
 13 Corrosion Protection29

FIELD WIRING CONNECTIONS

14 General30
 15 Cord-Connected Products30
 16 Permanently-Connected Products31
 16.1 General31
 16.2 Field-wiring terminals32
 16.3 Field wiring leads34
 16.4 Polarity identification35
 17 Grounding35

INTERNAL WIRING

18 General36
 19 Wiring Methods37
 20 Separation of Circuits38
 21 Bonding for Grounding38

COMPONENTS, ELECTRICAL

22	General	41
22.1	Mounting of components	41
22.2	Insulating materials	42
22.3	Fuseholders	43
22.4	Current-carrying parts	43
22.5	Power-on indicator	43
23	Overcurrent Protection	44
24	Semiconductors	44
25	Switches	44
26	Transformers and Coils	44

SPACINGS

27	General	44
28	Components	47

PERFORMANCE – ALL UNITS

29	General	47
29.1	Test units and data	47
29.2	Test samples and miscellaneous data	48
29.3	Test voltages	48
29.4	FCC requirements	48
30	Normal Operation Test	48
31	Current Protection Test	49
32	Input Test	49
33	Output Measurement Test	49
34	Electrical Supervision Test	50
35	Undervoltage Operation Test	51
36	Overvoltage Operation Test	51
37	Variable Ambient Test	51
38	Humidity Test	52
39	Leakage Current Tests for Cord-Connected Products	52
40	Electric Shock Current Test	55
41	Overload Test	59
41.1	General	59
41.2	Separately energized circuits	60
42	Endurance Test	60
42.1	General	60
42.2	Separately energized circuits	60
43	Jarring Test	60
44	Dielectric Voltage-Withstand Test	61
45	Temperature Test	62
46	Abnormal Operation Test	66
47	Electrical Transient Tests	66
47.1	General	66
47.2	Supply line transients	66
47.3	Internally induced transients	69
47.4	Input/output circuit transients	69
48	AC Induction Test	70
49	Polymeric Materials Test	71

50 Battery Replacement Test71
 51 Drop Test72
 52 Strain Relief Test72
 52.1 Supply cord72
 52.2 Field-wiring leads72
 53 Ignition Through Bottom-Panel Openings Test73
 53.1 General73
 53.2 Hot, flaming oil73
 53.3 Molten PVC and copper74
 54 Mechanical Strength Tests for Enclosures74
 55 Special Terminal Assemblies Tests75
 55.1 General75
 55.2 Disconnection and reconnection75
 55.3 Flexing test75
 55.4 Millivolt drop test76
 55.5 Temperature test76

POLICE STATION RECEIVING AND TRANSMITTING UNITS

56 General76
 57 Common Requirements77
 58 Direct-Connected Units77
 59 Transmitter-Connected Units77
 60 Other Methods of Alarm Transmission79
 61 Standard Line Security Equipment79
 62 Encrypted Line Security Equipment81

PROTECTED PREMISES EQUIPMENT

63 Subscriber’s Control Units81
 64 Outside Alarm Devices82
 65 Intrusion Detection82

MERCANTILE PREMISES ALARM SYSTEMS

GENERAL

66 Construction82
 67 Circuit and Operation83
 68 Maintenance84
 69 Attack Tests86
 69.1 General86
 69.2 Test method86
 70 Attack Resistance Time87
 71 Tamper Protection88
 72 Alarm Sounding Devices89

LINE SECURITY

73 General90

ULNORM.COM · Click to view the full PDF of UL 365 2018

MERCANTILE SAFE AND VAULT ALARM SYSTEMS

DETAILS

74 General90
75 Circuit and Operation90

BANK SAFE AND VAULT ALARM SYSTEMS

POLICE STATION CONNECTED BANK SAFE AND VAULT BURGLAR ALARM UNITS

76 General91
77 Circuit and Operation91
78 Maintenance93
79 Attack Test94

ALARM SYSTEMS FOR BANK SAFES AND VAULTS

80 General94
81 Tamper Protection95
82 Alarm Sounding Devices95
83 Circuit and Operation95

LINE SECURITY EQUIPMENT

84 General96
------------------	-----

POWER SUPPLIES

DETAILS

85 General96
------------------	-----

RECHARGEABLE (SECONDARY) BATTERIES

86 General97
------------------	-----

NONCHARGEABLE (PRIMARY) BATTERIES

87 General98
------------------	-----

PERFORMANCE

88 Power Failure Test99
89 Power Supply Located at Police Station100

SHORT RANGE RADIO FREQUENCY (RF) DEVICES

90 General101
91 Time to Report Alarm102
92 Inoperative Transmitter Reporting102
93 Battery Status Indication102
94 Tamper Protection103

95 Protection From Interference103
 96 Reference Level Determination103
 96.1 General103
 96.2 Method 1104
 96.3 Method 2106
 97 Interference Immunity109
 98 Frequency Selectivity110
 99 Clash111
 100 Clash Error112
 101 Error (Falsing) Rate112
 102 Throughput Rate114
 103 Transmitter Stability Test115
 104 Transmitter Accelerated Aging Test115
 105 Installation Instructions and User Manual115

MANUFACTURING AND PRODUCTION LINE TESTS FOR HIGH-VOLTAGE PRODUCTS

106 General116
 107 Production Line Dielectric Voltage-Withstand Test116
 108 Production Line Grounding Continuity Test117

MARKING

109 General117
 110 Marking Permanency Tests120

OUTDOOR USE EQUIPMENT

ASSEMBLY

111 General120
 112 Construction120
 112.1 General120
 112.2 Corrosion protection121
 113 Field-Wiring Connections123
 114 Internal Wiring123
 115 Components, Electrical Insulating Material124

PERFORMANCE

116 Rain Test124
 117 Dust Test128
 118 Variable Ambient Test128
 119 Metallic Coating Thickness Test128
 120 Corrosion Tests130
 120.1 General130
 120.2 Salt spray (fog)130
 120.3 Moist hydrogen sulfide (H₂S) – air mixture131
 120.4 Moist carbon dioxide (CO₂) – sulphur dioxide (SO₂) – air mixture131
 121 Ultraviolet Light and Water Exposure Test131
 122 Accelerated Aging Tests for Gaskets, Sealing Compounds, and Adhesives132

MARKING

123 General133

ACCESSORY EQUIPMENT

124 General134
125 Construction134
126 Performance (Installation) Test135
127 Markings135

Appendix A

Standards for Components..... A1

ULNORM.COM : Click to view the full PDF of UL 365 2018

INTRODUCTION

1 Scope

1.1 These requirements cover construction, performance, and maintenance of police station connected burglar-alarm units and systems for use in mercantile premises, mercantile safes and vaults, and bank safes and vaults.

1.2 As covered by these requirements, a police station connected alarm system consists of protective circuits and devices, connected through control apparatus to a sounding device mounted on an outside or inside wall of the building in which the protected property is situated, and a constantly-manned police department (see 1.8 and 56.1). Intrusion into or disturbance of the units or wiring causes the sounding device to be actuated and a signal to be transmitted to the police department. The sounding device and signal to the police department continue to operate until it is stopped by using the proper control key, by exhaustion of the power supply, or by action of an automatic timing element that is preset for a definite operating period. These systems usually operate within the limits of Class 2 remote control and signal circuits as defined by Article 725 of the National Electrical Code, NFPA 70.

1.3 The operation of a police station connected alarm system is partially under the control and domination of the owner or others interested in the property. However, it is required that police station connected systems be maintained under the care and regular inspection service of the installing company. The installing company is expected to respond promptly to troubles or calls for service on report of the owner or police department. See Mercantile Premises Alarm Systems, Maintenance, Section 68 and Bank Safe and Vault Alarm Systems, Maintenance, Section 78. It is the responsibility of the owner to switch the system on and off duty and to report malfunctioning of the system to the service company.

1.4 Police station connected mercantile burglar-alarm systems transmission means may be designated as standard line security or encrypted line security and are designated as to their acceptability for use either on mercantile premises or on mercantile safes and vaults. See Standard Line Security Equipment, Section 61, and Encrypted Line Security Equipment, Section 62.

1.5 Police station connected bank burglar-alarm systems transmission means may be designated as standard line security or encrypted line security and are for use on bank safes and vaults. See Standard Line Security Equipment, Section 61, and Encrypted Line Security Equipment, Section 62.

1.6 Equipment intended for combination burglar-alarm and fire-protective signaling systems is also expected to comply, with the Standard for Control Units and Accessories for Fire Alarm Systems, UL 864.

1.7 Devices installed on individual properties are further classified as to extent of protection at each location. Rules covering installation and classification (of extent) of alarm equipment at individual locations are published in the Standard for Installation and Classification of Burglar and Holdup Alarm Systems, UL 681, which should be consulted by burglar-alarm installers.

1.8 The connection to a police department may be:

- a) Direct or
- b) Through a central station or a residential monitoring station complying with the Standard for Central-Station Alarm Services, UL 827.

2 Terminology

2.1 The term "product" as used in this standard refers to all types of police station connected burglar alarm units and systems.

3 Components

3.1 Except as indicated in 3.2, a component of a product covered by this standard shall comply with the requirements for that component. See Appendix A for a list of standards covering components used in the products covered by this standard.

3.2 A component is not required to comply with a specific requirement that:

- a) Involves a feature or characteristic not required in the application of the component in the product covered by this standard, or
- b) Is superseded by a requirement in this standard.

3.3 A component shall be used in accordance with its rating established for the intended conditions of use.

3.4 Specific components are incomplete in construction features or restricted in performance capabilities. Such components are intended for use only under limited conditions, such as certain temperatures not exceeding specified limits, and shall be used only under those specific conditions.

4 Units of Measurement

4.1 Values stated without parentheses are the requirement. Values in parentheses are explanatory or approximate information.

4.2 Unless otherwise indicated, all voltage and current values mentioned in this standard are root-mean-square (rms).

5 Undated References

5.1 Any undated reference to a code or standard appearing in the requirements of this standard shall be interpreted as referring to the latest edition of that code or standard.

6 Glossary

6.1 For the purpose of this standard, the following definitions apply.

6.2 **ACKNOWLEDGMENT SIGNAL** – An audible and/or visual signal that is sent to the subscriber by the central station to notify the subscriber that a signal has been received indicating that the protection system has been properly armed. The acknowledgment signal can be sent manually or automatically.

6.3 **ALARM SOUNDING DEVICE** – An audible signal appliance (bell, horn, siren, or speaker) complying with the requirements in the Standard for Audible Signaling Devices for Fire Alarm and Signaling Systems, Including Accessories, UL 464, and this standard, that is used to signal unauthorized entry or attempted entry into a protected area or object.

6.4 **ALARM SOUNDING DEVICE HOUSING** – A housing, or the equivalent, that is used to protect an alarm sounding device from being silenced by physical attack. Also see Alarm Sounding Devices, Section 72. There are two versions:

a) **Outside** – A housing intended to be located outside of the protected area. See 71.4 and 71.9.

b) **Inside** – A housing intended to be located within the protected area where it can be seen by an intruder. See 71.8, 71.9 and 71.10.

Exception: These requirements are for alarm sounding device housings used in mercantile burglar alarm systems. For requirements for alarm sounding device housings used in bank alarm systems, see the Attack Test, Section 79; Tamper Protection, Section 81; and Alarm Sounding Devices, Section 82.

6.5 **CIRCUITS, ELECTRICAL:**

a) **High-Voltage** – A circuit involving a potential of not more than 600 volts and having circuit characteristics in excess of those of a low-voltage power limited circuit.

b) **Low-Voltage** – A circuit involving a potential of not more than 30 volts AC rms, 42.4 volts DC or AC peak.

c) **Power Limited** – A circuit whose output is limited as specified in Tables 6.1 and 6.2. The power limitation shall be provided by the construction of the transformer, a fixed impedance, a noninterchangeable fuse, a nonadjustable manual reset circuit protective device, or a regulating network.

Table 6.1
Power limitations for inherently limited power source (overcurrent protection not required)

Circuit voltage V_{max}^a AC-DC (volts)	Maximum nameplate ratings		Current limitation I_{max}^b (amperes)
	VA (volt amperes)	Current (amperes)	
0 to 20	$5.0 \times V_{max}^a$	5.0	8.0
Over 20 to 30	100	$100/V_{max}^a$	8.0
Over 30 to 100	100	$100/V_{max}^a$	$150/V_{max}^a$
Over 100 to 250 DC ^a only	$0.030 \times V_{max}^a$	0.030	0.030

NOTE – Reproduced from the National Electrical Code (ANSI/NFPA 70), 1993 Edition, copyright National Fire Protection Association, Batterymarch Park, Quincy, MA 02269.

^a V_{max} : Maximum output voltage regardless of load with rated input applied. 0 – 20 V-rms, 0 – 28.3 V DC or AC peak; 20 – 30 V-rms, 28.3 – 42.4 V DC or AC peak.

^b I_{max} : Maximum output current after 1 minute of operation under any noncapacitive load, including short circuit.

Table 6.2
Power limitations for power sources not inherently limited (overcurrent protection required)

Circuit voltage V_{max}^a AC-DC (volts)	Maximum nameplate ratings		Current limitation I_{max}^b (amperes)	Power limitation (VA) _{max} ^c (volt amperes)	Maximum overcurrent protection (amperes)
	VA (volt amperes)	Current (amperes)			
0 to 20	$5.0 \times V_{max}^a$	5.0	$1000/V_{max}^a$	250 ^d	5.0
Over 20 to 100	100	$100/V_{max}^a$	$1000/V_{max}^a$	250 ^d	$100/V_{max}^a$
Over 100 to 150	100	$100/V_{max}^a$	1.0	NA	1.0

NOTE – Reproduced from the National Electrical Code (ANSI/NFPA 70), 1993 Edition, copyright National Fire Protection Association, Batterymarch Park, Quincy, MA 02269.

^a V_{max} : Maximum output voltage regardless of load with rated input applied. (See note a, Table 6.1)

^b I_{max} : Maximum output after 1 minute of operation under any noncapacitive load, including short circuit, and with overcurrent protection bypassed.

^c (VA)_{max}: Maximum volt-ampere output regardless of load with overcurrent protection bypassed.

^d If the power source is a transformer (VA)_{max} is 350 or less when V_{max} is 15 or less.

6.6 CORD-CONNECTED – A unit intended for connection to the power source by means of a supply cord. Such a unit is intended to be moved for reasons of interchange or realignment of the units of a system.

6.7 DIGITAL ALARM COMMUNICATOR (DAC) – A transmission method as outlined in the Standard for Digital Alarm Communicator System Units, UL 1635, by cellular and/or telephone landline transmission.

6.8 HARDWARE KEY DEVICE – A mechanical or electronic device employed to enable the remote programming mode.

6.9 LINE VOLTAGE – The voltage at any field connected source of supply, nominally 50 – 60 hertz, and either 115, 208, or 230 volts.

6.10 NORMAL STANDBY CONDITION – The ready-to-operate condition of the product existing prior to its being tripped or operated by an intrusion.

6.11 POLICE DEPARTMENT – Any government-related law enforcement agency.

6.12 PRIMARY BATTERY – A battery that by construction is not intended to be recharged.

6.13 RADIO FREQUENCY– Electromagnetic radiation, nominally above 20 kilohertz.

6.14 SAFETY CIRCUIT– Any primary or secondary circuit that is relied upon to reduce the risk of fire, electric shock, or unintentional contact with moving parts that may cause injury to persons (an interlock circuit, for example).

6.15 SECONDARY BATTERY – A battery that, by construction, is intended to be recharged.

6.16 SERVICE CENTER – A location that may be separate from the alarm service company's main business location providing installation, maintenance, and repair service to systems served by the company. The service center is to keep maintenance records for the systems that it serves unless the records can be accessed from another location.

6.17 SERVICE VEHICLE– A vehicle used to provide installation, maintenance, and repair service to systems served by the company.

6.18 SIGNAL TRANSMISSION METHODS – Any of the following methods: direct wire, multiplex, derived channel, two way radio (RF), DACT/DACR, one way radio (RF), packet switched data network, or code transmitter.

7 Installation and Operating Instructions

7.1 A copy of the installation and operating instructions intended to accompany each product or component as produced, the related schematic wiring diagrams, and the installation drawings is to be furnished with the sample submitted for investigation, to be used as a guide in the examination and test of the product or component. For this purpose, a final printed edition is not required.

7.2 The instructions and drawings shall include at least the following:

- a) Typical installation drawing layouts and a complete representative installation wiring diagram(s) for the product(s) indicating recommended locations and wiring methods that shall be in accordance with the National Electrical Code, ANSI/NFPA 70, and the Standard for Installation and Classification of Burglar and Holdup Alarm Systems, UL 681. Locations where installations are not recommended shall also be included.
- b) Concise description of the operation, testing, and maintenance procedures for the product(s), and recommended testing frequency (that shall be at least once a year).
- c) Identification of replacement parts, such as lamps or batteries, by a part number, manufacturer's model number, or the equivalent.
- d) A description of the conditions that might be expected to result in false alarms or impaired operation of the product(s).
- e) A description of any features provided to reduce the risk of fire, electric shock, or injury to persons and a warning against bypassing such features.

7.3 The instructions may be incorporated on the inside of the product, on a separate sheet, or as part of a manual. If not included directly on the product, the instructions or manual shall be referenced in the marking information on the product. See Marking, General, Section 109.

8 Installation and Operating Instructions Physical Media

8.1 The installation diagram(s) and any special field installation instructions shall be attached to the unit or, when separate, shall be provided in printed hardcopy format. A copy shall be supplied with each individual product or with each single shipment when multiples of the same products are shipped directly (to an end customer) in a single shipment.

8.2 The following sections contain information that shall be provided in printed hardcopy format and supplied with the unit(s):

- a) 7.2(a);
- b) 16.2.3.1(c);
- c) 16.2.3.2(a);
- d) 16.2.3.2(b);
- e) 16.2.3.2(c);
- f) 16.3;
- g) 109.1, Exception No. 1;
- h) 109.3;
- i) 109.4; and
- j) 109.11.

8.3 Other installation instructions, operating and test instructions shall be made available by printed hardcopy or by electronic media such as a CD, DVD, website, or equivalent. Optionally, a copy may be supplied with each individual product or with each single shipment when multiples of the same products are shipped directly (to an end customer) in a single shipment.

ULNORM.COM : Click to view the full PDF of UL 365 2018

CONSTRUCTION

ASSEMBLY

9 General

9.1 Product assembly

9.1.1 The product shall be factory-built as a complete assembly and shall include all the components necessary for its intended function when installed (used) as intended. The product may be shipped from the factory as two or more major subassemblies. See 9.1.2.

9.1.2 If the product is not assembled by the manufacturer as a complete unit, it shall be arranged in major subassemblies. Each subassembly shall be capable of being incorporated into a complete assembly without requiring alteration, cutting, drilling, threading, welding, or similar tasks by the installer. Two or more subassemblies, which must bear a definite relationship to each other for the correct installation or operation of the product, shall be arranged and constructed to permit them to be incorporated into the complete assembly only in the correct relationship with each other without need for alteration or alignment, or such subassemblies shall be assembled, tested, and shipped from the factory as one element.

9.2 Electrical protection

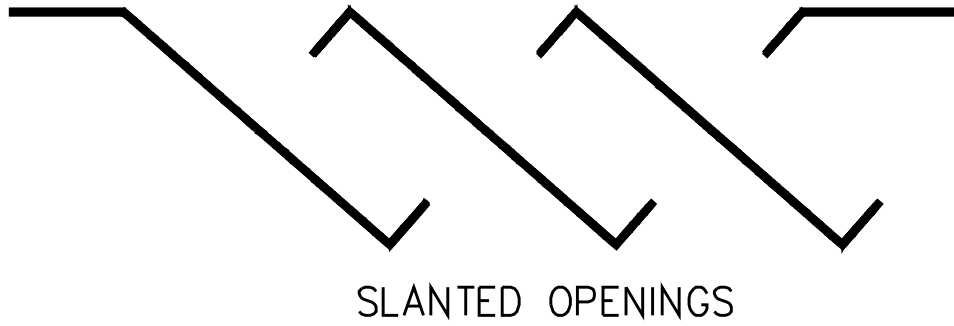
9.2.1 Louvers and other openings in the enclosure shall be constructed and located to reduce the risk of unintentional contact with uninsulated high-voltage live parts. In determining compliance with this requirement, parts such as covers, panels, and grilles used as part of the enclosure are to be removed unless tools are required for their removal or an interlock is provided. See also Protection of Service Personnel, Section 10.

9.2.2 Uninsulated high-voltage live parts shall be located, guarded, or enclosed as indicated in 9.2.3 – 9.2.5.

9.2.3 Openings directly over uninsulated high voltage live parts shall not exceed 0.187 inch (4.75 mm) in any dimension, or shall be of a configuration as illustrated by Figure 9.1 for top cover designs and Figure 9.2 for side openings, or the equivalent.

9.2.4 An opening in an electrical enclosure that does not permit entrance of a 1 inch (25.4 mm) diameter rod shall be sized and arranged so that a probe, as illustrated in Figure 9.3, cannot be made to contact any uninsulated live part (other than low-voltage) when inserted through the opening in a straight or articulated position.

Figure 9.1
Cross sections of top cover designs



EC500

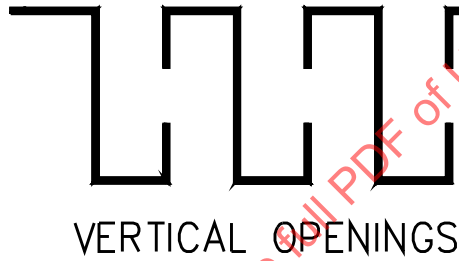
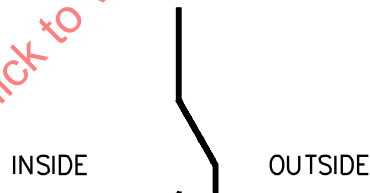
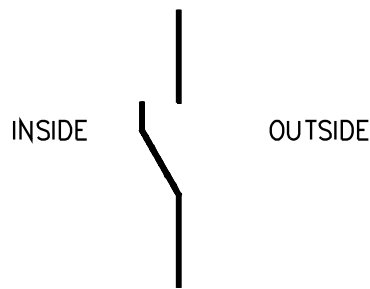


Figure 9.2
Louvers



OUTWARD PROJECTION

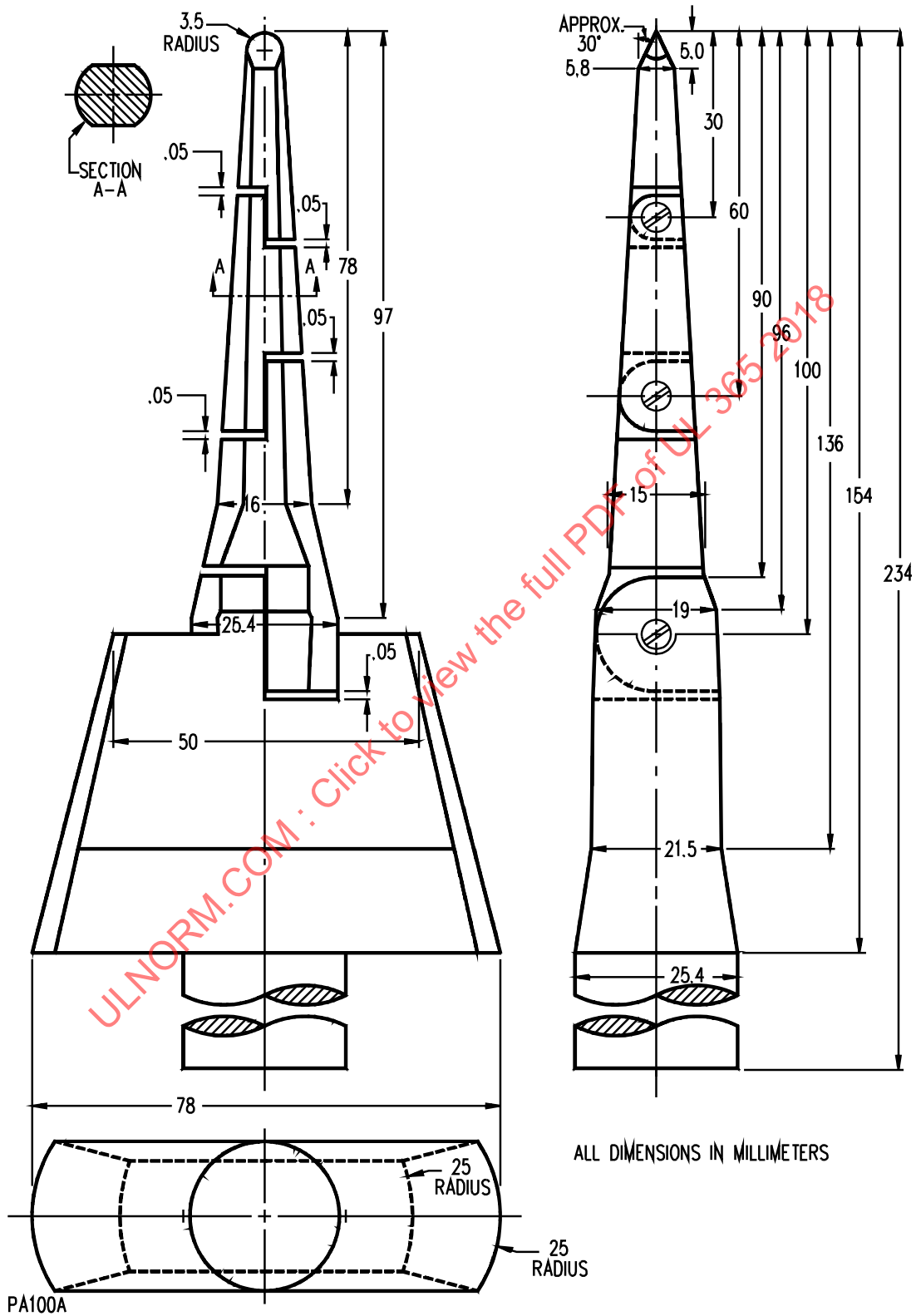


EC510

INWARD PROJECTION

ULNORM.COM : Click to view the full PDF of UL 365 2018

Figure 9.3
Accessibility probe

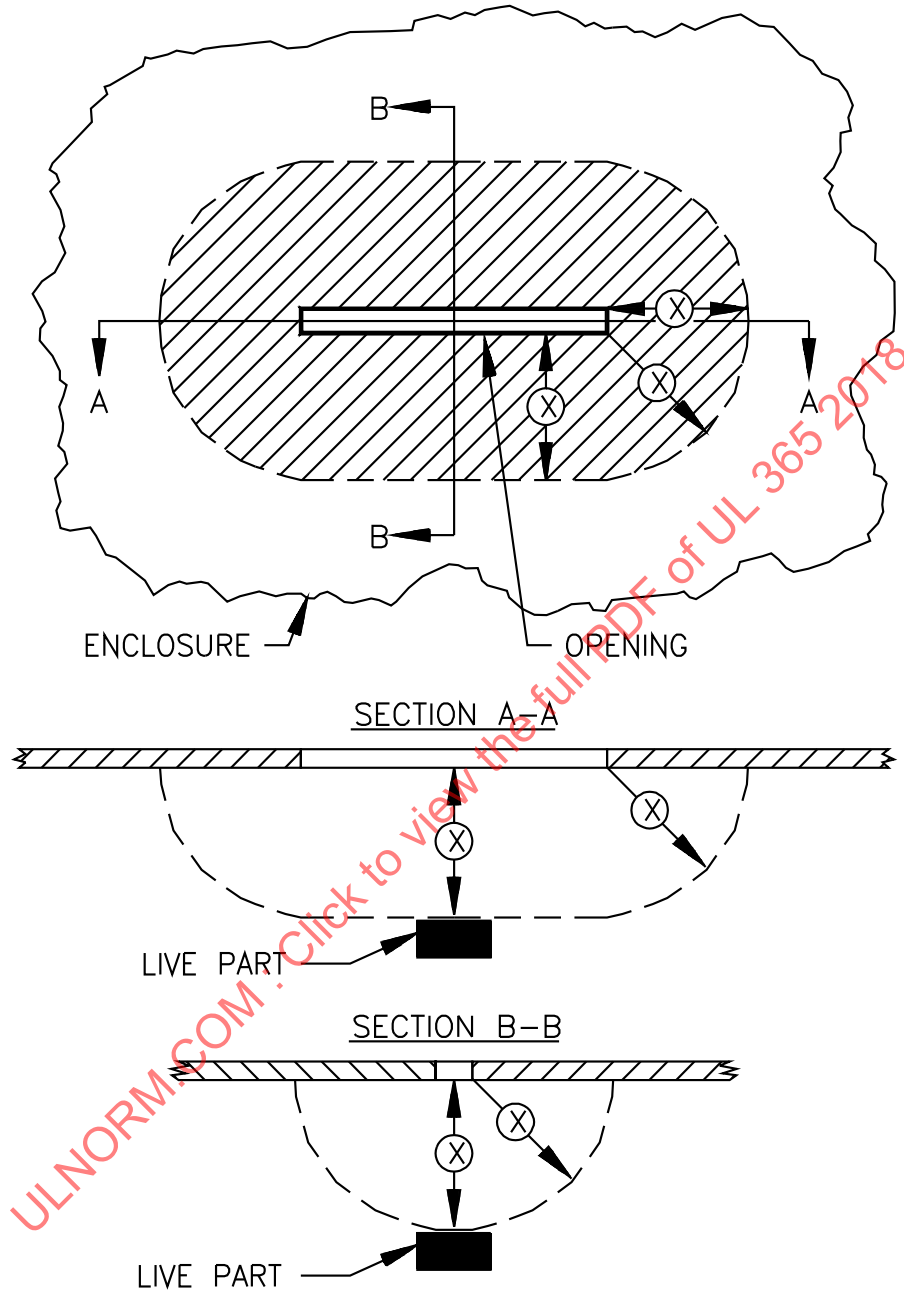


9.2.5 An opening that permits entrance of a 1 inch (25.4 mm) diameter rod is acceptable under the conditions described and illustrated in Figure 9.4.

9.2.6 Knockouts or openings in an alarm housing for the connection of circuits shall be in the mounting surface only.

ULNORM.COM : Click to view the full PDF of UL 365 2018

Figure 9.4
Opening in enclosure



EC100A

The opening is acceptable if, within the enclosure, there is no uninsulated live part or enamel-insulated wire less than X inches (mm) from the perimeter of the opening, as well as within the volume generated by projecting the perimeter X inches (mm) normal to its plane. X equals five times the diameter of the largest diameter rod that can be inserted through the opening, but not less than 6-1/16 inches (154 mm).

10 Protection of Service Personnel

10.1 An uninsulated live part of a high-voltage circuit within the enclosure shall be located, guarded, or enclosed so as to reduce the risk of accidental contact by persons performing service functions that may be performed while the equipment is energized.

10.2 During the examination of a product in connection with the requirements in 10.1, a part of the outer enclosure that may be removed without the use of tools, or part of the outer enclosure that may be removed by the user to allow access for making routine operating adjustments, is to be disregarded; and it is to be assumed that the part in question does not afford protection against the risk of electric shock.

10.3 An electrical component that may require examination, replacement, adjustment, servicing, or maintenance while the product is energized shall be located and mounted with respect to other components and with respect to grounded metal so that:

- a) The component is accessible for such service and
- b) The risk of electric shock to the service person from adjacent uninsulated high-voltage live parts is reduced.

10.4 The following are not considered to be uninsulated live parts:

- a) Coils of relays and solenoids, and transformer windings, if the coils and windings are provided with insulating overwraps rated for the potentials encountered,
- b) Terminals and splices with insulation rated for the potential encountered, and
- c) Insulated wire.

11 Enclosures

11.1 General

11.1.1 The enclosure of a product shall have the strength and rigidity to resist total or partial collapse and the attendant reduction of spacings, loosening or displacement of parts, or other defects. See the Mechanical Strength Tests for Enclosures, Section 54.

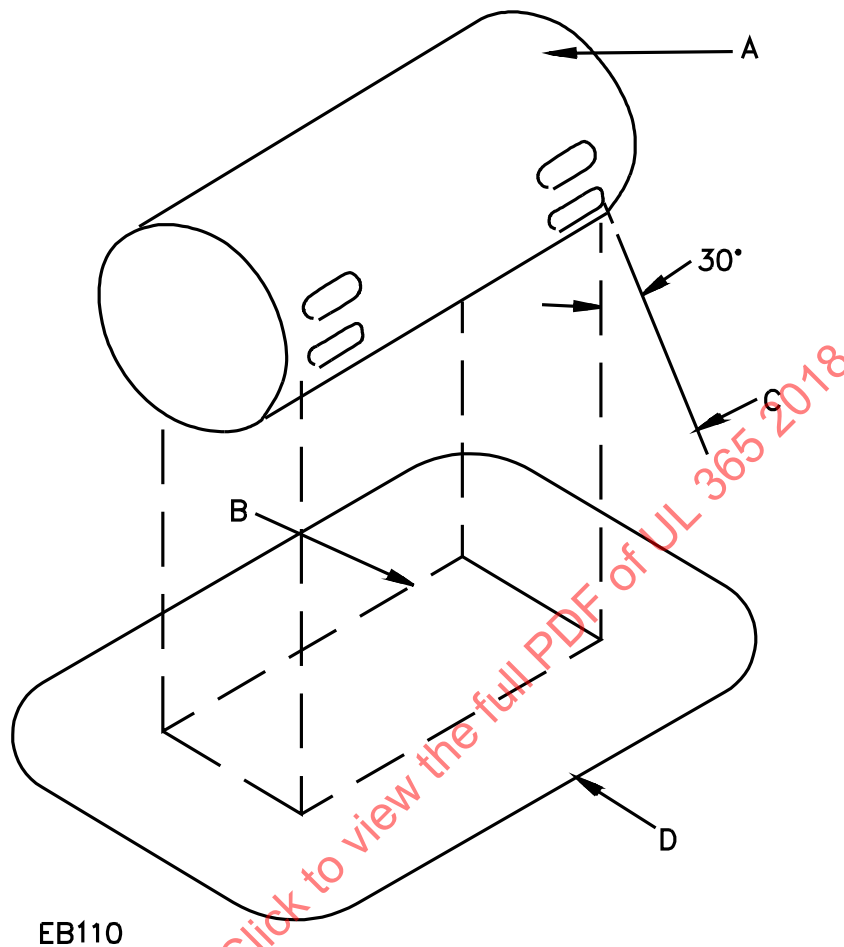
11.1.2 Operating parts, such as gear mechanisms, light-duty relays, and similar devices, shall be enclosed to protect against malfunction due to dust or other material which may impair their intended operation.

11.1.3 An enclosure containing other than power limited circuits shall be constructed to reduce the possibility of emission of flame, molten metal, flaming or glowing particles, or flaming drops. See the Ignition Through Bottom-Panel Openings Test, Section 53.

11.1.4 The requirement in 11.1.3 necessitates either a nonflammable bottom in accordance with the requirements in 11.3.2, or a protective barrier as illustrated in Figure 11.1 under all areas containing combustible materials.

Exception: See 11.3.3.

Figure 11.1
Protective barrier



A – The entire component under which a barrier (flat or dished with or without a lip or other raised edge) of nonflammable material is to be provided. The sketch above is of a metal enclosed component with ventilating openings to show that the protective barrier is required only for those openings from which flaming parts might drop. If the component or assembly does not have its own nonflammable enclosure, the area to be protected would be the entire area occupied by the component or assembly.

B – Projection of the outline of the area of (A) which requires a bottom barrier vertically downward onto the horizontal plane of the lowest point on the outer edge (D) of the barrier.

C – Inclined line that traces out an area (D) on the horizontal plane of the barrier. Moving around the perimeter of the area (B) which requires a bottom barrier, this line projects at a 30-degree angle from the line extending vertically at every point around the perimeter of (A) and oriented to trace out the largest area, except that the angle may be less than 30-degrees if the barrier or portion of the bottom cover contacts a vertical barrier or side panel of nonflammable material, or if the horizontal extension of the barrier (B) to (D) would exceed 6 inches (152 mm).

D – Minimum outline of the barrier, except that the extension B – D need not exceed 6 inches (152 mm) (flat or dished with or without lip or other raised edge). The bottom of the barrier may be flat or formed in any manner when every point of area (D) is at or below the lowest point on the outer edge of the barrier.

11.1.5 A construction employing individual barriers under components, groups of components or assemblies, as illustrated in Figure 11.1, is considered to comply with the requirement in 11.1.3.

11.2 Doors and covers

11.2.1 An enclosure cover shall be hinged, sliding, or similarly attached so it cannot be removed if it:

- a) Gives access to fuses or any other overcurrent protective device, the intended functioning of which requires renewal; or
- b) Is necessary to open the cover in connection with the intended operation of the unit.

Exception: If its position is supervised by a tamper contact that is connected in the closed protective circuit, an enclosure need not comply with the requirements of this paragraph. See also 34.5.

11.2.2 Fasteners requiring the use of a tool or key shall be used for the assembly of all enclosures if access is not required for operation of the product.

11.2.3 The cover of an enclosure shall be provided with a supervisory contact, connected in the closed protective wiring circuit, if it gives access to any relays, terminals, controls, or related components that might be subject to tampering without causing an alarm signal. Requirements for complete electrical protection are covered in Subscriber's Control Units, Section 63.

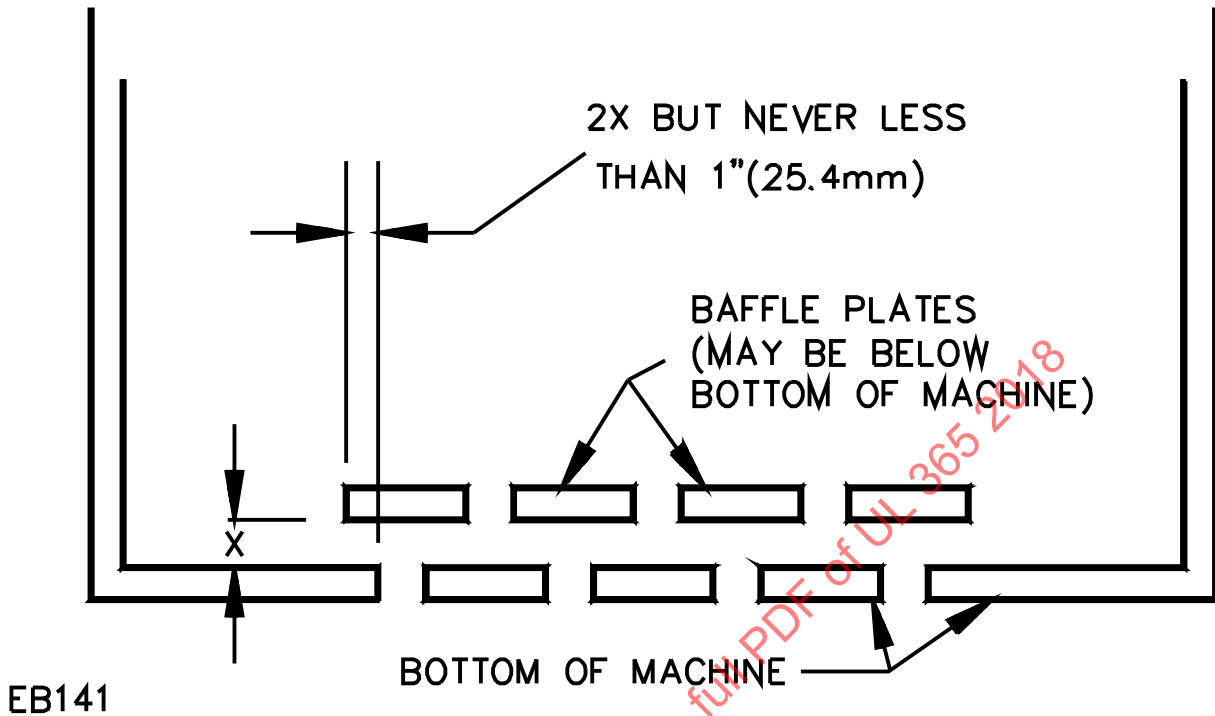
Exception: An enclosure located inside of a completely protected safe or vault does not require tamper protection.

11.3 Enclosure openings

11.3.1 Openings in the enclosure shall be constructed and of such size so that direct entry of foreign objects is prevented. See also 9.2.3. See Figure 9.1 for examples of acceptable top cover constructions that are deemed to prevent direct entry. See also Figure 9.2 for acceptable side opening constructions.

11.3.2 Openings may be provided in the bottom panels or protective pans under areas containing materials not classified as V-1, in accordance with the Standard for Tests for Flammability of Plastic Materials for Parts in Devices and Appliances, UL 94, if constructed in a manner that prevents materials from falling directly from the interior of the product onto the supporting surface or onto any other location under the product. Figure 11.2 illustrates a type of baffle that complies with this requirement. A second construction that complies with this requirement is a 0.040 inch (1.02 mm) sheet steel bottom panel in which round holes of 5/64 inch (2.0 mm) maximum diameter are spaced not closer together than 1/8 inch (3.2 mm) center-to-center. Constructions other than these two are acceptable if they comply with the Ignition Through Bottom-Panel Openings Test, Section 53.

Figure 11.2
Bottom panel baffles



EB141

11.3.3 The bottom of the enclosure under areas containing only materials classified as V-1 or less flammable, may have openings not larger than 1/16 square inch (40.3 mm²).

11.3.4 Openings are acceptable, without limitation of the size or number of openings, in areas containing only PVC, TFE, CTFE, FEP, and neoprene insulated wire or cable, in areas containing plugs and receptacles, and in areas underneath impedance protected or thermally protected motors.

11.3.5 Openings in the enclosure shall not give access to relays, terminals, controls, or related components that might be subject to tampering by hand or with tools without causing an alarm or trouble signal.

11.4 Screens and expanded metal

11.4.1 Screens or expanded metal used as a guard, enclosure, or part of an enclosure, shall comply with the requirements in 11.4.3 and 11.5.1 and with the Mechanical Strength Tests for Enclosures, Section 54.

11.4.2 Perforated sheet steel and sheet steel employed for expanded metal mesh shall be not less than 0.042 inch (1.07 mm) thick [0.045 inch (1.17 mm) if zinc coated] if the mesh openings or perforations are 1/2 square inch (323 mm²) or less in area, and shall be not less than 0.080 inch (2.03 mm) thick [0.084 inch (2.13 mm) if zinc coated] for larger openings. The largest dimension of this material shall not exceed 4 inches (102 mm).

Exception: If the indentation of a guard or the enclosure will not alter the clearance between uninsulated live parts and grounded metal so as to impair performance or reduce spacings below the minimum required values (see Spacings, General, Section 27, and the Mechanical Strength Tests for Enclosures, Section 54), 0.020 inch (0.51 mm) expanded steel mesh or perforated sheet steel [0.023 inch (0.58 mm) if zinc coated] may be employed, when:

- a) *The exposed mesh on any one side or surface of the product so protected has an area of not more than 72 square inches (464 cm²) and has no dimension greater than 12 inches (305 mm) or*
- b) *The width of the opening covered by this material is not greater than 3-1/2 inches (89 mm).*

11.4.3 The wires of a screen shall be not less than 16 AWG (1.3 mm diameter) steel if the screen openings are 1/2 square inch (323 mm²) or less in area, and shall be not less than 12 AWG (2.1 mm diameter) steel for larger screen openings.

11.5 Cast metal

11.5.1 The minimum thickness of cast metal for an enclosure shall be as indicated in Table 11.1.

Exception: Cast metal of lesser thickness may be employed if, after consideration has been given to the shape, size, and function of the enclosure, it is determined to provide equivalent mechanical strength. See the Drop Test, Section 51, and the Mechanical Strength Tests for Enclosures, Section 54.