



# UL 1598

## STANDARD FOR SAFETY

Luminaires

[ULNORM.COM](https://www.ulnorm.com) : Click to view the full PDF of UL 1598 2024

[ULNORM.COM](https://ulnorm.com) : Click to view the full PDF of UL 1598 2024

UL Standard for Safety for Luminaires, UL 1598

Fifth Edition, Dated March 26, 2021

### **Summary of Topics**

***This revision of ANSI/UL 1598 dated January 31, 2024 includes the following:***

- ***Grounding of secondary circuits; [6.7.1.6](#), [6.20.1](#)***
- ***Clarification of [5.7.1.3](#) and [6.20.5](#)***
- ***Delete orphaned 9.6 header;***
- ***Polymeric Recessed Luminaires Marking Clarification; [12.8.5.2](#)***
- ***Revised alternate method for luminaires physically too small for all required markings;***
- ***Marking size for small luminaires; [K.5.1](#) and [K.5.2](#)***
- ***Indoor Wet Locations Environmental Rating; [14.1.2](#), [14.5.2](#),***
- ***Editorial updates and corrections; [6.20.6 \(USA\)](#), [6.20.6 \(CAN\)](#), [7.2.3.6](#), [Table 6.9.1 \(CAN\)](#), [8.7.2](#), [10.4.2](#), [13.2.4.5](#); [13.2.4.8](#), [13.3.4.3](#); [14.4.5.2](#), [17.40.1.3](#), [17.40.1.4](#), [17.42.1](#), [18.2.3](#), [19.17.1](#), [20.2.5](#), [H.5.7.1](#), [I.7.1](#) – [I.7.3](#), [J.6.1.2](#), [Table 14.4.8.1](#), [Table 20.1.1](#), [Table A.1](#), [Table B.1 \(CAN\)](#) and [Table C.1 \(MEX\)](#).***

Text that has been changed in any manner or impacted by ULSE's electronic publishing system is marked with a vertical line in the margin.

The new and revised requirements are substantially in accordance with Proposal(s) on this subject dated February 17, 2023, June 30, 2023 and October 20, 2023.

All rights reserved. No part of this publication may be reproduced, stored in a retrieval system, or transmitted in any form by any means, electronic, mechanical photocopying, recording, or otherwise without prior permission of ULSE Inc. (ULSE).

ULSE provides this Standard "as is" without warranty of any kind, either expressed or implied, including but not limited to, the implied warranties of merchantability or fitness for any purpose.

In no event will ULSE be liable for any special, incidental, consequential, indirect or similar damages, including loss of profits, lost savings, loss of data, or any other damages arising out of the use of or the inability to use this Standard, even if ULSE or an authorized ULSE representative has been advised of the possibility of such damage. In no event shall ULSE's liability for any damage ever exceed the price paid for this Standard, regardless of the form of the claim.

Users of the electronic versions of UL's Standards for Safety agree to defend, indemnify, and hold ULSE harmless from and against any loss, expense, liability, damage, claim, or judgment (including reasonable attorney's fees) resulting from any error or deviation introduced while purchaser is storing an electronic Standard on the purchaser's computer system.

No Text on This Page

[ULNORM.COM](https://ULNORM.COM) : Click to view the full PDF of UL 1598 2024



Association of Standardization and Certification  
NMX-J-307/1-ANCE  
Fourth Edition



CSA Group  
CSA C22.2 No. 250.0:21  
Fifth Edition



ULSE Inc.  
UL 1598  
Fifth Edition

## Luminaires

March 26, 2021

(Title Page Reprinted: January 31, 2024)



ANSI/UL 1598-2024



## **Commitment for Amendments**

This standard is issued jointly by the Association of Standardization and Certification (ANCE), the Canadian Standards Association (operating as "CSA Group"), and ULSE Inc. (ULSE). Comments or proposals for revisions on any part of the standard may be submitted to ANCE, CSA Group, or ULSE at anytime. Revisions to this standard will be made only after processing according to the standards development procedures of ANCE, CSA Group, and ULSE. CSA Group and ULSE will issue revisions to this standard by means of a new edition or revised or additional pages bearing their date of issue. ANCE will incorporate the same revisions into a new edition of the standard bearing the same date of issue as the CSA Group and ULSE pages.

---

## **Copyright © 2021 ANCE**

Rights reserved in favor of ANCE.

---

## **978-1-4883-2946-3 © 2021 Canadian Standards Association**

All rights reserved. No part of this publication may be reproduced in any form whatsoever without the prior permission of the publisher.

This Standard is subject to review within five years from the date of publication, and suggestions for its improvement will be referred to the appropriate committee. To submit a proposal for change, please send the following information to [inquiries@csagroup.org](mailto:inquiries@csagroup.org) and include "Proposal for change" in the subject line: Standard designation (number); relevant clause, table, and/or figure number; wording of the proposed change; and rationale for the change.

To purchase CSA Group Standards and related publications, visit CSA Group's Online Store at [www.csagroup.org/store/](http://www.csagroup.org/store/) or call toll-free 1-800-463-6727 or 416-747-4044.

---

## **Copyright © 2024 ULSE INC.**

Our Standards for Safety are copyrighted by ULSE Inc. Neither a printed nor electronic copy of a Standard should be altered in any way. All of our Standards and all copyrights, ownerships, and rights regarding those Standards shall remain the sole and exclusive property of ULSE Inc.

This ANSI/UL Standard for Safety consists of the Fifth Edition including revisions through January 31, 2024. The most recent designation of ANSI/UL 1598 as an American National Standard (ANSI) occurred on January 31, 2024. ANSI approval for a standard does not include the Cover Page, Transmittal Pages, Title Page (front and back), or the Preface.

Comments or proposals for revisions on any part of the Standard may be submitted to ULSE at any time. Proposals should be submitted via a Proposal Request in ULSE's Collaborative Standards Development System (CSDS) at <https://csds.ul.com>

For information on ULSE Standards, visit <http://www.shopulstandards.com>, call toll free 1-888-853-3503 or email us at [ClientService@shopULStandards.com](mailto:ClientService@shopULStandards.com).

---

**CONTENTS**

**Preface ..... 11**

1 Scope ..... 13

2 Reference publications ..... 14

3 Definitions ..... 18

4 General requirements ..... 24

    4.1 Components ..... 24

    4.2 Application of requirements ..... 25

    4.3 Units of measurement ..... 25

5 Mechanical construction ..... 36

    5.1 General ..... 36

    5.2 Assembly and packaging ..... 37

    5.3 Enclosures ..... 37

    5.4 Barriers ..... 37

    5.5 Metal thickness for enclosures ..... 38

    5.6 Corrosion protection ..... 39

    5.7 Polymeric materials ..... 40

    5.8 Baffles ..... 42

    5.9 Conduit knockouts and twistouts ..... 42

    5.10 Mechanical joints and fastenings ..... 42

    5.11 Means of mounting ..... 44

    5.12 Movable joints ..... 44

    5.13 Raceway tubing ..... 44

    5.14 Conductor protection ..... 44

    5.15 Strain relief ..... 44

    5.16 Glass ..... 45

    5.17 Glass support ..... 46

    5.18 Thermal insulation ..... 46

    5.19 Continuous row mounting ..... 47

    5.20 Raceways ..... 47

6 Electrical construction ..... 47

    6.1 General ..... 47

    6.2 Wiring devices ..... 48

    6.3 Lampholders ..... 48

    6.4 Switches ..... 49

    6.5 Receptacles ..... 50

    6.6 Fuses and fuseholders ..... 50

    6.7 Ballasts and transformers ..... 50

    6.8 Capacitors ..... 55

    6.9 Conductors and cords ..... 56

    6.10 Unenclosed conductors in Class 2 circuits ..... 63

    6.11 Identification and polarity ..... 64

    6.12 Electrical spacings ..... 64

    6.13 Electrical insulation ..... 66

    6.14 Accessibility of live parts ..... 66

    6.15 Grounding and bonding ..... 67

    6.16 Supply connections ..... 72

    6.17 Wiring compartment and junction box volume for branch circuit conductors ..... 74

    6.18 Separation of circuits ..... 76

    6.19 (MEX) Wire splices and connections ..... 76

    6.20 Interconnected units ..... 76

7 Incandescent luminaires – supplementary requirements ..... 78

    7.1 General ..... 78

	7.2 Temperature test-exempt luminaires .....	78
	7.3 Tungsten-halogen luminaires .....	89
8	Fluorescent luminaires – supplementary requirements .....	94
	8.1 General .....	94
	8.2 Ballasts .....	94
	8.3 Supply cords and conductors .....	94
	8.4 Lampholders .....	95
	8.5 Temperature-test-exempt luminaires .....	95
	8.6 Marking .....	96
	8.7 Factory installed emergency devices .....	97
	8.8 Luminaires incorporating instant-start electronic ballasts and bi-pin lampholders .....	97
	8.9 (CAN) Branch circuit disconnects .....	97
	8.10 (CAN) Branch circuit disconnects – Conversion kits .....	98
9	HID luminaires – supplementary requirements .....	99
	9.1 General .....	99
	9.2 Lampholders .....	99
	9.3 Lamp containment barriers for metal halide lamps .....	99
	9.4 Ultra-violet (UV) attenuation barriers for metal halide lamps without integral UV blocking outer glass envelopes .....	100
	9.5 Accessibility of double-ended lamp terminals .....	101
	9.6 Deleted .....	102
	9.7 Marking .....	102
10	LED luminaires – supplementary requirements .....	103
	10.1 General .....	103
	10.2 Lampholders .....	103
	10.3 Printed wiring boards .....	103
	10.4 Factory installed emergency devices .....	103
	10.5 Class P LED Drivers .....	103
	10.6 Markings .....	104
	10.7 (CAN) Branch circuit disconnects .....	104
11	Surface-mounted luminaires – supplementary requirements .....	105
	11.1 General .....	105
	11.2 Mounting means .....	105
	11.3 Poles .....	107
	11.4 Open holes and openings .....	109
	11.5 Accessibility of supply connections .....	113
	11.6 Electrical construction .....	113
	11.7 Tests .....	115
	11.8 Markings .....	116
12	Recessed luminaires – supplementary requirements .....	116
	12.1 General .....	116
	12.2 Enclosures .....	117
	12.3 Junction boxes .....	117
	12.4 Recessed housing .....	118
	12.5 Thermal protectors .....	119
	12.6 Electrical construction .....	122
	12.7 Tests .....	124
	12.8 Markings .....	127
13	Miscellaneous luminaires – supplementary requirements .....	130
	13.1 General .....	130
	13.2 Air-handling luminaires .....	130
	13.3 Luminaires for use above cooking equipment .....	133
	13.4 Elevated ambient temperature luminaires .....	135
	13.5 Luminaire fittings .....	136
	13.6 Luminaires suitable for use in clothes closet storage spaces .....	136
	13.7 (CAN) Clothes closet luminaires .....	136

14	Environmental location luminaires – supplementary requirements.....	140
14.1	General.....	140
14.2	Damp, indoor wet, and and wet location luminaires .....	140
14.3	Damp location luminaires .....	141
14.4	Wet location luminaires .....	141
14.5	Indoor wet location luminaires.....	147
15	Normal temperature tests.....	147
15.1	General.....	147
15.2	Surface ceiling luminaires.....	150
15.3	Surface wall luminaires .....	151
15.4	Under-cabinet luminaires .....	151
15.5	Type Non-IC recessed luminaires (not intended for thermal insulation contact).....	152
15.6	Type Non-IC marked spacings luminaires (not intended for thermal insulation contact) .....	152
15.7	Type IC recessed luminaires (intended for thermal insulation contact).....	153
15.8	Type IC and LED Type Non-IC inherently protected recessed luminaires .....	153
15.9	Recessed luminaires for use in poured concrete .....	153
15.10	Through-wiring junction box temperature .....	154
15.11	Raceway temperature .....	155
15.12	(MEX) Temperature rise .....	155
16	Abnormal temperature tests .....	156
16.1	General.....	156
16.2	Type Non-IC recessed luminaires (not intended for thermal insulation contact).....	157
16.3	Type Non-IC marked spacings incandescent and HID recessed luminaires (not intended for thermal insulation contact).....	158
16.4	Type IC incandescent recessed luminaires (intended for thermal insulation contact) ...	159
16.5	Abnormal overlamping operation test for incandescent luminaires with polymeric housings or enclosures .....	163
17	Mechanical tests .....	163
17.1	Barrier strength.....	163
17.2	Metal thickness equivalency.....	163
17.3	Five-inch flame .....	166
17.4	Mold stress relief .....	167
17.5	Wet locations.....	167
17.6	Hot-wire ignition (HWI) .....	173
17.7	Glow-wire end product .....	174
17.8	High-current arc ignition (HAI) .....	175
17.9	End-product arc resistance.....	175
17.10	Polymeric support.....	176
17.11	Metallized polymeric parts coating adhesion.....	176
17.12	Flaming oil.....	176
17.13	Conduit knockout and twistout .....	176
17.14	Self-threading screw torque .....	177
17.15	Loading.....	177
17.16	Snap-in or tab-mounted parts pull test without conduit opening.....	178
17.17	Snap-in or tab-mounted parts pull test with conduit opening .....	178
17.18	Suspended-ceiling luminaires – security of clips .....	178
17.19	Movable joint rotation .....	178
17.20	Movable joint torsion and pull.....	179
17.21	Strain relief.....	179
17.22	Tempered glass impact .....	179
17.23	Glass support adhesive .....	180
17.24	Glass supported by friction or adhesive .....	180
17.25	Horizontal burning flame.....	180
17.26	Vertical burning flame.....	181
17.27	Needle flame .....	183

17.28	Lamp containment barrier thermal shock .....	184
17.29	Polymeric lamp containment barrier melt-through .....	185
17.30	Polymeric connector loading .....	185
17.31	Junction box rigidity .....	185
17.32	Splice inspection.....	186
17.33	Lampholder mounting torque .....	186
17.34	Lampholder pull .....	186
17.35	Lampholder mounting bracket stop test .....	187
17.36	(MEX) Thermal shock.....	187
17.37	(MEX) Vibration .....	187
17.38	Lampholder lead pull.....	187
17.39	Ground-screw assembly strength.....	187
17.40	Cable pull test.....	188
17.41	Polymeric impact .....	189
17.42	Metal strength tests for reduced spacings .....	190
18	Electrical tests.....	190
18.1	Dielectric voltage-withstand .....	190
18.2	Bonding circuit impedance.....	191
18.3	Interlock switch endurance .....	191
18.4	Articulate probe .....	191
18.5	(MEX) Insulation resistance.....	192
18.6	Risk of electric shock during relamping .....	192
18.7	Bonding conductor test.....	195
19	Test procedures and apparatus .....	196
19.1	Installation and support .....	196
19.2	Temperature test stabilization .....	196
19.3	Voltage .....	196
19.4	Frequency.....	198
19.5	Ambient temperature .....	198
19.6	Rise-of-resistance temperature method.....	198
19.6	(MEX) Temperature rise.....	199
19.7	Thermocouples .....	200
19.8	Test lamps.....	200
19.9	Branch circuit conductor temperature probe.....	205
19.10	Surface ceiling temperature test apparatus .....	207
19.11	Surface wall temperature test apparatus .....	209
19.12	Surface-mounted under-cabinet luminaire test alcove.....	210
19.13	Temperature test boxes for Type Non-IC recessed luminaires (not intended for thermal insulation contact) .....	212
19.14	Temperature test box for Type Non-IC, marked spacings, recessed ceiling-mounted luminaires (not intended for thermal insulation contact).....	217
19.15	Temperature test box for Type IC recessed luminaires (intended for thermal insulation contact) .....	224
19.16	Thermal insulation used for recessed temperature tests.....	227
19.17	Rain test apparatus.....	227
19.18	Sprinkler test apparatus.....	230
19.19	Bond impedance and ground continuity test apparatus .....	231
19.20	Dielectric voltage-withstand test apparatus .....	231
19.21	Impact test apparatus.....	231
19.22	Articulate probe .....	233
19.23	Conduit knockout and twistout test apparatus.....	235
19.24	Five-inch flame test apparatus .....	235
19.25	UV exposure test apparatus.....	237
19.26	Gasket compression test apparatus .....	237
19.27	Lampholder mounting torque test apparatus .....	237
19.28	Glow-wire test apparatus.....	238

19.29 Horizontal burning flame test apparatus ..... 241

19.30 Vertical burning flame test apparatus ..... 241

19.31 Needle flame test apparatus ..... 243

19.32 Plywood test box material ..... 243

19.33 (MEX) Insulation resistance test apparatus ..... 243

19.34 (MEX) Vibration test apparatus ..... 243

20 Marking ..... 244

20.1 General ..... 244

20.2 Identification and ratings ..... 245

20.3 Durability of stamped ink marking test ..... 246

20.4 Luminaire mounting and orientation ..... 246

20.5 Wiring, installation and assembly instructions ..... 246

20.6 (MEX) Marking requirements in Mexico ..... 247

**ANNEX A (normative) Components**

A.1 Component standards ..... 266

**Annex B (CAN) (Normative) Markings**

**Annex C (MEX) (Normative) Markings**

**Annex D (Normative) Pictograms**

**Annex E (Informative) Metric conversion**

**Annex F (CAN) (Normative) Printed circuit boards**

F.1 Special terminology ..... 282

F.2 General ..... 282

F.3 Printed circuit board coatings ..... 283

F.3.1 Dielectric strength ..... 283

F.3.2 Adhesion ..... 283

F.3.3 Insulation resistance test voltage ..... 284

F.3.4 Printed circuit boards ..... 285

**Annex G (Normative) Luminaires for use with self-ballasted compact fluorescent (CFL) or self-ballasted light emitting diode (LED) lamps**

G.1 Special terminology ..... 286

G.2 General ..... 286

G.3 Construction, test and marking requirements ..... 286

G.3.1 Incandescent luminaires with conventional lampholders ..... 286

G.3.2 Fluorescent luminaires with GU24 lampholders ..... 286

G.3.3 LED luminaires with Edison lampholders ..... 287

**Annex H (CAN) (normative) Revisions**

H.1 Scope ..... 291

H.2.101 Reference publications ..... 291

H.3.101	Definitions.....	292
H.4	General requirements .....	292
	H.4.2 Application of requirements.....	292
H.5	Mechanical construction .....	293
	H.5.3 Enclosures .....	293
	H.5.5 Metal thickness for enclosures .....	293
	H.5.7 Polymeric materials .....	293
	H.5.11 Means of mounting .....	294
	H.5.12 Movable joints .....	294
	H.5.13 Raceway tubing .....	294
	H.5.15 Strain relief .....	295
	H.5.18 Thermal insulation .....	295
	H.5.19 Continuous row mounting .....	295
	H.5.20 Raceways.....	295
	H.5.21.101 Shade, diffuser, lens, or decorative part.....	295
	H.5.22.101 Mounting of components and parts.....	295
H.6	Electrical construction .....	296
	H.6.2 Wiring devices .....	296
	H.6.3 Lampholders.....	296
	H.6.4 Switches.....	297
	H.6.5 Receptacles.....	297
	H.6.6 Fuses and fuseholders .....	297
	H.6.7 Ballasts and transformers .....	297
	H.6.8 Capacitors .....	299
	H.6.9 Conductors and cords.....	299
	H.6.10 Identification and polarity .....	300
	H.6.11 Electrical spacings.....	300
	H.6.12 Electrical insulation.....	300
	H.6.13 Accessibility of live parts .....	302
	H.6.14 Grounding and bonding .....	303
	H.6.15 Supply connections .....	303
	H.6.16 Wiring compartment and junction box volume for branch circuit conductors .....	303
H.7	Incandescent luminaires – supplementary requirements .....	303
H.8	Fluorescent luminaires – supplementary requirements .....	304
H.10	HID luminaires – supplementary requirements .....	304
H.11	Surface-mounted luminaires – Supplementary requirements .....	305
H.12	Recessed luminaires – Supplementary requirements.....	305
H.13	Miscellaneous luminaires – Supplementary requirements .....	305
H.15	Normal temperature tests .....	305
H.16	Abnormal temperature tests.....	308
	H.16.1 Abnormal temperature tests for incandescent luminaires .....	308
	H.16.2 Abnormal operation tests for LED luminaires .....	308
H.17	Mechanical tests .....	309
	H.17.4 Mould stress relief .....	309
	H.17.4 .....	309
	H.17.5 Wet locations .....	309
	H.17.15 Loading .....	309
	H.17.19 Movable joint rotation.....	309
	H.17.20 Movable joint torsion and pull .....	309
	H.17.24 Glass supported by friction or adhesive .....	309
	H.17.28 Lamp containment barrier thermal shock.....	309
	H.17.29 Polymeric lamp containment barrier melt-through.....	309
	H.17.38 Lampholder lead pull .....	309
H.18	Electrical tests .....	309
	H.18.1 Dielectric voltage-withstand.....	309
	H.18.101 Current input test.....	310

- H.18.102 Fault conditions ..... 310
- H.18.103 Insulation equivalence ..... 311
- H.19 Test procedures and apparatus ..... 311
  - H.19.101 Ball-pressure test apparatus ..... 311
- H.20 Marking ..... 312
  - H.20.101 RV luminaire markings ..... 312
- H.I.101 Factory production tests (informative) ..... 312
- H.I.1 Dielectric voltage-withstand ..... 313

**Annex I (informative) Factory production tests**

- I.1 Dielectric voltage-withstand ..... 314
- I.2 Grounding continuity ..... 314
  - I.2.1 General ..... 314
  - I.2.2 Grounding continuity test for unassembled luminaires ..... 315
- I.3 Glass support ..... 315
- I.4 Strain relief ..... 315
- I.5 Polarity ..... 315
- I.6 Ground screw torque ..... 316
- I.7 Accessible edges ..... 316
- I.8 Test records ..... 316

**Annex J (Normative) Light-emitting Plasma (LEP) Luminaires**

- J.1 Scope ..... 317
- J.2 Definitions ..... 317
- J.3 General requirements ..... 317
- J.4 Mechanical construction ..... 317
- J.5 Electrical construction ..... 317
  - J.5.1 Lamps ..... 317
  - J.5.2 Power supplies and transformers ..... 317
  - J.5.3 Factory-installed wiring and separation of circuits ..... 318
  - J.5.4 Secondary circuits ..... 318
  - J.5.5 Electrical spacings ..... 318
- J.6 Performance ..... 318
  - J.6.1 Radiation emissions test ..... 318
- J.7 Markings ..... 319
- J.8 Instruction manual ..... 319

**Annex K (Normative) Luminaires intended for contact with expandable foam thermal building insulation**

- K.1 Scope ..... 320
- K.2 Reference publications ..... 320
- K.3 General requirements ..... 320
- K.4 Tests ..... 321
- K.5 Markings ..... 321

No Text on This Page

[ULNORM.COM](https://ulnorm.com) : Click to view the full PDF of UL 1598 2024

## Preface

This is the harmonized ANCE, CSA Group, and ULSE standard for Luminaires. It is the fourth edition of NMX-J-307/1-ANCE, the fifth edition of CSA C22.2 No. 250.0, and the fifth edition of UL 1598. This edition of CSA C22.2 No. 250.0 supersedes the previous editions published in 2018, 2008, 2004 and 2000. This edition of UL 1598 supersedes the previous edition(s) published in 2018. This harmonized standard has been jointly revised on January 31, 2024. For this purpose, CSA Group and ULSE are issuing revision pages dated January 31, 2024, and ANCE is issuing a new edition dated January 31, 2024.

This harmonized standard was prepared by the Association of Standardization and Certification (ANCE), CSA Group, and ULSE.

This standard is considered suitable for use for conformity assessment within the stated scope of the standard.

The present Mexican standard was developed by the CT 34 – Illumination from the Comité de Normalización de la Asociación de Normalización y Certificación, A.C., CONANCE, with the collaboration of the Luminaires manufacturers and users.

This Standard was reviewed by the CSA Integrated Committee on Lighting Products, under the jurisdiction of the CSA Technical Committee on Consumer and Commercial Products and the CSA Strategic Steering Committee on Requirements for Electrical Safety, and has been formally approved by the CSA Technical Committee. This Standard has been developed in compliance with Standards Council of Canada requirements for National Standards of Canada. It has been published as a National Standard of Canada by CSA Group.

### Application of Standard

Where reference is made to a specific number of samples to be tested, the specified number is to be considered a minimum quantity.

Note: Although the intended primary application of this standard is stated in its scope, it is important to note that it remains the responsibility of the users of the standard to judge its suitability for their particular purpose.

### Level of Harmonization

This standard is published as an equivalent standard for ANCE, CSA Group, and ULSE.

An equivalent standard is a standard that is substantially the same in technical content, except as follows: Technical national differences are allowed for codes and governmental regulations as well as those recognized as being in accordance with NAFTA Article 905, for example, because of fundamental climatic, geographical, technological, or infrastructural factors, scientific justification, or the level of protection that the country considers appropriate. Presentation is word for word except for editorial changes.

### Interpretations

The interpretation by the standards development organization of an identical or equivalent standard is based on the literal text to determine compliance with the standard in accordance with the procedural rules of the standards development organization. If more than one interpretation of the literal text has been identified, a revision is to be proposed as soon as possible to each of the standards development organizations to more accurately reflect the intent.

No Text on This Page

[ULNORM.COM](https://ulnorm.com) : Click to view the full PDF of UL 1598 2024

## 1 Scope

1.1 This Standard applies to luminaires for use in non-hazardous locations and that are intended for installation on branch circuits of 600 V nominal or less between conductors in accordance with the Canadian Electrical Code, Part I (CEC), CSA C22.1, with the U.S. National Electrical Code (NEC), ANSI/NFPA 70, and with the Mexican National Electrical Code, NOM-001-SEDE.

1.2 This Standard does not apply to luminaires covered by other standards. The luminaries not covered by this Standard include:

Amateur Movie Lights;

Aquarium Lights;

Cabinet Lights;

Decorative Lighting Strings;

Combination Fan/IR Lamps Used for Heating;

Electric Signs;

Exit Signs;

Junction Boxes for Swimming Pool Fixtures;

Lamp Adapters;

Low-Level Path Marking and Lighting Systems in the United States;

Low-Voltage Landscape Lighting as follows:

For products intended for installation in Canada, landscape lighting systems that are 30 V nominal or less; and

For products intended for installation in Mexico, low-voltage landscape lighting devices that are 24 V nominal or less.

For products intended for installation in the United States, low-voltage landscape lighting devices that are of 15 V nominal or less;

Low Voltage Lighting Fixtures for Use in Recreational Vehicles;

Low Voltage Marine Lighting;

Luminaires for Hazardous Locations;

Luminaires for Recreational Vehicles in the United States;

Marine Navigational Lights;

Marine-Type Fixtures;

Portable Electric Displays;

Portable Hand Lamps;

Portable Luminaires;

Portable Sun/Heat Lamps;  
Self-Ballasted Lamps and Lamp Adapters;  
Stage and Studio Luminaires;  
Submersible Luminaires;  
Swimming Pools Luminaires;  
Temporary Lighting Strings;  
Therapeutic Lamps;  
Track Lighting Systems;  
Under-cabinet Lights in Canada and Cord-connected Under-cabinet Lights in the United States;  
and  
Unit Equipment for Emergency Lighting.

1.3 Requirements applicable to light emitting diode (LED) components and subassemblies integral to a luminaire covered by this standard are provided in UL 8750 and CSA C22.2 No. 250.13.

## 2 Reference publications

For undated references to standards, such reference shall be considered to refer to the latest edition and all revisions to that edition up to the time when this Standard was approved. For dated references to standards, such reference shall be considered to refer to the dated edition all revisions published to that edition up to the time the Standard was approved.

### ANCE (Mexican National Standards)

NMX-J-198-ANCE-2005

*Electrical Products – Lighting – Ballast for fluorescent lights – Test methods*

NMX-J-230-ANCE-2001

*Ballast Lighting – Electromagnetics and electronics for mercury vapour lights of high pressure and metallic additives – Specifications and test methods*

NMX-J-547-ANCE-2005

*Lighting – Metal halide lamps – Specifications*

NMX-J-553-ANCE-2002

*Wires and cables – Weather resistance of insulation or jacket of electrical conductors – Test method*

NMX-J-565/2-11-ANCE-2005

*Fire hazard testing – Part 2-11: Glow/hot-wire-based test methods – Glow-wire flammability test*

NMX-J-565/3-ANCE-2006

*Safety requirements – Flammability of plastic materials for parts in devices and appliances – Test methods*

NMX-J-565/6-ANCE-2007

*Safety requirements – Hot wire resistance to ignition – Test method*

NMX-J-565/7-ANCE-2007

*Safety requirements – High-current arc resistance to ignition – Test method*

NOM-001-SEDE

*Mexican National Electrical Code*

NOM-064-SCFI-2000

*Electrical appliances – Lamps for indoor and outdoor use – Safety specifications and test methods*

### **CSA Group**

C22.1

*Canadian Electrical Code, Part I (CEC)*

CSA C22.2 No. 0

*General requirements – Canadian Electrical Code, Part II*

C22.2 No. 0.2

*Insulation coordination*

C22.2 No. 0.15

*Adhesive Labels*

CAN/CSA-C22.2 No. 0.17

*Evaluation of Properties of Polymeric Materials*

C22.2 No. 62

*Surface Raceway Systems*

CSA C22.2 No. 1993/3 UL 1993 / NMX-J-578/1-ANCE

*Self-ballasted lamps and lamp adapters*

C22.2 No. 74

*Equipment for Use With Electric Discharge Lamps*

C22.2 No. 84

*Incandescent Lamps*

C22.2 No. 250.13

*Light emitting diode (LED) equipment for lighting applications*

C22.2 No. 206

*Lighting Poles*

### **IEC (International Electrotechnical Committee)**

IEC 60695-2-11

*Fire hazard testing*

### **UL (Underwriters Laboratories Inc.)**

UL 5

*Surface Metal Raceways and Fittings*

UL 498

*Attachment Plugs and Receptacles*

UL 723

*Test for Surface Burning Characteristics of Building Materials*

UL 746C

*Polymeric Materials – Use in Electrical Equipment Evaluations*

UL 817

*Cord Sets and Power-Supply Cords*

UL 840

*Insulation Coordination Including Clearances and Creepage Distances for Electrical Equipment*

UL 935

*Fluorescent-Lamp Ballasts*

UL 969

*Marking and Labeling Systems*

UL 1012

*Power Units Other Than Class 2*

UL 1439

*Tests for Sharpness of Edges on Equipment*

UL 1561

*Dry-Type General Purpose and Power Transformers*

UL 1977

*Component Connectors for Use in Data, Signal, Control and Power Applications*

UL 2043

*Fire Test for Heat and Visible Smoke Release for Discrete Products and Their Accessories Installed in Air-Handling Spaces*

UL 8750

*Light Emitting Diode (LED) Equipment for Use in Lighting Products*

#### **ANSI (American National Standards Institute)**

ANSI\_ANSLG C81.62 (2009)

*Electric Lampholders*

ANSI C78.380 (2005)

*Electric Lamps – High Intensity Discharge Lamps, Method of Designation*

#### **ANSI/IESNA (Illuminating Engineering Society of North America)**

ANSI/IESNA RP-27 series of standards

*Photobiological Safety for Lamps and Lamp Systems*

**ASTM (American Society for Testing and Materials)**

ASTM D 635-03

*Standard Test Method for Rate of Burning and/or Extent and Time of Burning of Plastics in a Horizontal Position*

ASTM D 1000-99

*Standard Test Method for Pressure-Sensitive Adhesive-Coated Tapes Used for Electrical and Electronic Applications*

ASTM D 3801-00

*Standard Test Method for Measuring the Comparative Burning Characteristics and Resistance of Solid Plastics in a Vertical Position*

ASTM D 5048-03

*Standard Test Method for Measuring the Comparative Burning Characteristics and Resistance to Burn Through of Solid Plastics Using 125 mm Flame*

ANSI/ASTM E230/E230M

*Standard Specification and Temperature-Electromotive Force (emf) Tables for Standardized Thermocouples*

ASTM G 151-00

*Standard Practice for Exposing Nonmetallic Materials in Accelerated Test Devices that Use Laboratory Light Sources*

ASTM G 153-00ae1

*Standard Practice for Operating Enclosed Carbon Arc Light-Apparatus for Exposure of Nonmetallic Materials*

ASTM G 155-00ae1

*Standard Practice for Operating Xenon Arc Light Apparatus for Exposure of Nonmetallic Materials*

ASTM MNL 12-1993

*Manual on the Use of Thermocouples in Temperature Measurements: Fourth Edition***Government of Canada***National Building Code of Canada, 2005***IAPMO (International Association of Plumbing and Mechanical Officials)***2015 Uniform Mechanical Code***ICC (International Code Council)***2015 International Mechanical Code***IEC (International Electrotechnical Commission)**

IEC 60695-2-10:2000

*Fire hazard testing – Part 2-10: Glowing/hot-wire based test methods – Glow-wire apparatus and common test procedure*

## NFPA (National Fire Prevention Association)

ANSI/NFPA 70-2005  
*National Electrical Code (NEC)*

NFPA 90A-2012  
*Standard for Installation of Air Conditioning and Ventilating Systems*

## NIST (National Institute of Standards and Technology)

NIST ITS-90  
*Thermocouple Database*

### 3 Definitions

The following definitions apply in this Standard:

**Air-handling luminaire** – a luminaire designed and intended to connect directly to duct work fabricated specifically to handle environmental air as the primary purpose.

**Baffle** – a part of a luminaire that allows air passage but limits the emission of flame, arcs, or molten material from exiting the enclosure.

**Ballast** – in Canada and the United States, a device that by means of reactance or resistance, singly or in combination, limits the current of a lamp to the required value for proper operation and, where necessary, provides adequate starting voltage. In the case of rapid start circuits, it provides voltage for low-voltage lamp filament heating.

**Ballast (MEX)** – in Mexico an electromagnetic, electronic, or hybrid device that, through inductances, capacitances, resistances, and/or electronic elements (transistor, thyristors, etc.), alone or in combination, limit the lamp current, and, when necessary, the starting current and voltage. The electromagnetic and hybrid ballast has the same output frequency as the mains (60 Hz). Electronic ballasts are those that have at least one frequency converter.

**Ballast, fluorescent, thermally protected** – in Canada and the United States, a ballast that complies with the Class P requirement of UL 935 or the requirements for thermally protected ballasts in CSA C22.2 No. 74.

**Ballast, fluorescent, thermally protected (MEX)** – in Mexico, a ballast that contains a thermal protector or is inherently protected.

**Ballast, reactor (simple reactance)** – a reactance-type ballast in which the lamp ballasting impedance is provided by a single coil inductor, not a transformer or inductor with additional components.

**Ballast, remote** – a ballast that is not mounted on a luminaire, or one that is mounted on the luminaire 460 mm (18 in) or more from the luminaire housing, as measured from the nearest point on the ballast to the nearest point (other than an incidental projection) on the luminaire housing. The ballast may or may not be provided with the luminaire.

**Barrier** – a part of the luminaire intended to reduce the risk of shock or injury to persons.

**Bonding** – a low impedance path obtained by permanently joining all non-current-carrying metal parts to achieve electrical continuity and having the capacity to conduct any current likely to be imposed on it.

**Canopy** – a plate or similar fitting intended to provide a cover over an outlet box.

**Canopy, drop** – a canopy that can be lowered for access to the supply connections without lowering the luminaire. The canopy does not support the luminaire.

**CEC** – *Canadian Electrical Code, Part I.*

**Cellulosic** – a paper or wood type product that is treated or processed. Examples include insulation, paper, and fiber.

**Circuit, Isolated Low Voltage Limited Energy (LVLE)** – a circuit supplied by a source with no direct electrical connection between input and output, such as provided by a transformer or optical isolator, and with output parameters as follows: source with a maximum output voltage of 42.4 V peak ac (30 V rms) or 60 V dc, and a maximum output current limited to:

- a) 8 Amps for 0 to 42.4 V peak ac, or 0 to 30 V dc; or
- b) 150/VA, for a voltage between 30 and 60 V dc.

**Comply with** – a term to denote that the requirements specified for the construction or material have been fulfilled by

- a) conducting a specified test;
- b) confirming that a specified test has been conducted on the same or similar construction or material; or
- c) determining by an engineering evaluation that equivalent, or greater, acceptable compliance has been demonstrated.

**Conductor, insulated** – a conductor encased within material recognized as electrical insulation.

**Conductor, neutral** – the identified grounded conductor, referred to as “the neutral”.

**Cord set** – a length of flexible cord having an attachment plug at one end and a cord connector at the other end.

**Decorative part** – a part of the luminaire, outside the enclosure, that has no safety function.

**Diffuser** – a device to redirect or scatter the light from a source, primarily by the process of diffuse transmission.

**Electrical spacing** – the minimum distance, measured through the air or over an insulating surface, between an uninsulated live part and ground or between uninsulated live parts of opposite polarity.

**Electric-discharge lamp** – a lamp in which the light (or radiant energy near the visible spectrum) is produced by the passage of an electric current through a vapor or gas (e.g., a fluorescent or HID lamp, such as metal halide, sodium vapor, and mercury).

**Enclosure, electrical** – a part of the luminaire intended to reduce the risk of electric shock.

**Fixture** – referenced as a luminaire in this Standard.

**Flat glass** – a glass panel, usually formed from sheet stock, the overall shape of which is essentially flat. The panel can have a slight curvature or bend, and the surface may be smooth or textured.

**Gasket** – a resilient material used between two rigid surfaces.

**Ground screw assembly** – the combination of a machine or thread forming screw and a threaded hole in a metal part of the luminaire enclosure or mounting crossbar for the purpose of securing the branch circuit equipment-grounding conductor.

**Guard** – the part of a luminaire provided primarily for the purpose of reducing the risk of injury to persons by limiting user access to components that can have a high temperature or maybe damaged by impact.

**Insulation, basic** – insulation applied to live parts to provide basic protection against electric shock.

NOTE In Mexico, basic insulation does not necessarily include insulation used exclusively for functional purposes.

**Insulation, supplementary** – independent insulation applied in addition to basic insulation.

**Interconnected unit** – a luminaire designed to receive and/or provide power to or from another luminaire through a mating connector assembly.

**Interconnecting cord** – a cord running between two luminaires.

**Knockout** – a partially cut-out opening that is closed until the precut material is removed.

**Lamp** – a device, intended to be inserted into a lampholder, that produces light (commonly called “light bulb”).

**Lamp compartment** – a construction for test-exempt luminaires that restricts the dissipation of heat.

**Lamp containment barrier** – any part of the luminaire that surrounds the lamp to contain hot particles of the lamp in the event it ruptures.

**Lampholder** – a wiring device intended for making connection to the electrical circuits of a lamp and, in some cases, providing support.

**Lamp-supported lampholder** – a lampholder supported by the lamp that, in turn, is supported by the luminaire.

**LED (light emitting diode)** – a solid-state component embodying a p-n junction, emitting optical radiation when excited by an electric current.

**LED array (LED module)** – an assembly of one or more LED discrete electronic components on a printed circuit board, typically with optics and additional thermal, mechanical, and electrical interfaces.

**LED control module (LED controller)** – electronic circuitry interposed between the power source and an LED array to dim, switch, or otherwise control the electrical energy to the LED array. The device does not contain a power source and is not connected directly to the branch circuit.

**LED driver** – a power source that adjusts the voltage or current to LEDs, ranging in complexity from a resistor to a constant voltage or constant current power supply. Also referred to as “Lamp Control Gear”.

**LED package** – an assembly of one or more LED die that contains wire bond connections and can include an optical element and thermal, mechanical, and electrical interfaces. The package does not include a power source and is not connected directly to the branch circuit.

**Light source, non-replaceable** – a light source that requires removal of wiring to the light source, or tools to remove the light source from its installed position.

**Live part** – a conductive part without basic insulation, where there is a risk of electric shock. The neutral conductor is considered to be a live part.

**Location, damp** – an exterior or interior location that is normally or periodically subject to condensation of moisture in, on, or adjacent to, electrical equipment, and includes partially protected locations.

**Location, dry** – a location not normally subject to dampness, but may include a location subject to temporary dampness, as in the case of a building under construction, provided ventilation is adequate to prevent an accumulation of moisture.

**Location, indoor wet** – an indoor location in which water or other liquid can drip, splash, or flow on or against electrical equipment, but where there is no consideration for outdoor sun exposure or extreme low temperatures.

**Location, wet** – a location in which water or other liquid can drip, splash, or flow on or against electrical equipment.

**Luminaire** – a complete lighting unit consisting of a lamp or lamps, together with the parts designed to distribute the light, to position and protect the lamps and ballast (where applicable), and to connect the lamps to the power supply.

**Luminaire, canopy type** – a luminaire intended for installation through an opening in an outdoor canopy or marquee. It is not intended for indoor use or outdoor installations that can have thermal insulation installed.

**Luminaire, convertible** – a recessed luminaire that can be converted by the installer from a Type Non-IC to a Type IC or from a Type IC to Type Non-IC recessed luminaire.

**Luminaire, cord-connected** – a luminaire that is designed to be connected to the power source by means of a cord, with or without an attachment plug, and that is not normally moved from one place to another.

**Luminaire fitting** – a luminaire subassembly, such as a reflector, ballast assembly, enclosure end plate, mounting hanger assembly, adapter plate, pole, or other part, that is shipped separately and field-assembled to one or more other luminaire fittings or to an otherwise complete luminaire.

**Luminaire, ground-mounted recessed** – a luminaire in which the supply connection or electrical components are located below ground level.

**Luminaire, ground-mounted surface** – a luminaire mounted at ground level in which the supply connection or electrical components are located above ground level.

**Luminaire, pendant** – a luminaire that is designed to be suspended below the mounting surface.

**Luminaire, recessed** – a luminaire that is designed to be either wholly or partially recessed in a mounting surface.

**Luminaire, recessed finishing section** – the portion of the luminaire that consists of the recessed housing or the lampholder, or both, that is necessary to complete the luminaire.

**Luminaire, recessed, LED Type Non-IC inherently protected (evaluated for insulation contact)** – an LED recessed luminaire that does not require a thermal protective device and that complies with the requirements for a Type IC, inherently protected luminaire.

**Luminaire, recessed rough-in section** – the portion of the luminaire that includes all electrical parts and wiring to which the branch circuit are connected but may not be provided with the recessed housing or the lampholder, or both.

**Luminaire, recessed, Type IC (intended for insulation contact)** – a recessed luminaire that is designed and identified for installation in a cavity filled with thermal insulation. The luminaire may be in direct contact with combustible materials and the insulation.

**Luminaire, recessed, Type IC, inherently protected (intended for insulation contact)** – a recessed luminaire that does not require a thermal protective device and that complies with the normal temperature limits of this Standard under all conceivable operating conditions.

**Luminaire, recessed, Type Non-IC (not intended for insulation contact)** – a recessed luminaire designed for installation in a cavity that has minimum dimensions and spacings to thermal insulation and combustible material in compliance with the installation code. It is not intended to be in contact or covered with thermal insulation.

**Luminaire, recessed, Type Non-IC, marked spacings (not intended for insulation contact)** – a recessed luminaire designed to be installed in a cavity where the clearance to combustible building members and thermal insulation are specified by the manufacturer.

**Luminaire, surface** – a luminaire that is designed to be mounted directly to a wall or ceiling surface.

**Manufacturer** – (for the purposes of this Standard) the company, agency, or individual submitting the product for evaluation; the term does not necessarily refer to the actual manufacturer of the product.

**NEC** – the *National Electrical Code* of the United States.

**Nominal system voltage** – the system-designated rms voltage.

**Open hole** – an aperture in a luminaire enclosure or a recessed housing that is not covered or filled by another part.

**Opening** – an aperture in an enclosure that is covered or filled by a plug or knockout and that has the potential of becoming an open hole.

**Ordinary tools** – tools that can normally be expected to be available to the user, such as screwdrivers, hammers, nut drivers, and pliers.

**Polymeric material** – a manufactured material comprised of a polymer or a combination of polymers, in combination with additives, such as colors, stabilizers, plasticizers, anti-oxidants, lubricants, anti-static agents, fillers, and reinforcing, that possess properties useful for fabrication of functional articles.

**Power limited circuit** – see *NEC*, Section 725 and *CEC*, Section 16.

**Recessed housing** – a part of a recessed luminaire that projects into the ceiling or wall cavity and serves to close off the opening from the room side, and does not necessarily enclose conductors or similar components.

**Risk of electric shock** – in Canada and the United States, a risk of electric shock exists between any two uninsulated conductive parts of a luminaire or between an uninsulated conductive luminaire part and earth ground if the continuous current flow through a 1500 Ω resistor in parallel with a 0.15µF capacitor connected between the two points exceeds 5 mA rms (7 mA peak) and if the open circuit voltage exceeds the following limits for dry, damp, and wet locations:

Waveform Type <sup>a</sup>	Maximum Voltage	
	Dry and Damp Locations	Wet Locations
Sinusoidal ac	30 V rms	15 V rms
Non-sinusoidal ac	42.4 V peak	21.2 V peak
dc <sup>b,c</sup>	60 V	30 V

<sup>a</sup> For a combined ac + dc waveform, the wet location voltage limit must be the non-sinusoidal ac limit where the dc voltage is no more than 10.45 V, and must be (16.5 + 0.225\*dc voltage)V where the dc voltage is greater than 10.45 V. The dry and damp location voltage limit must be twice these amounts.

<sup>b</sup> If the peak-to-peak ripple voltage on a dc waveform exceeds 10% of the dc voltage, the waveform must be considered a combined waveform per footnote a.

<sup>c</sup> DC waveforms interrupted at frequencies between 10 and 200 Hz must be limited to 24.8 V in dry and damp locations, and 12.4 V in wet locations.

**Risk of electric shock (MEX)** – in Mexico, a risk of electric shock exists between any two uninsulated conductive parts of a luminaire or between an uninsulated conductive luminaire part and earth ground if the continuous current flow through a 1500 Ω resistor in parallel with a 0.015µF capacitor connected between the two points exceeds 5 mA rms (7 mA peak) and if the open circuit voltage exceeds 30 V rms or 42.4 V peak for dry, damp, and wet locations.

**Risk of fire** – a risk of fire exists in all electrical circuits except:

- a) when  $V_{max}$ ,  $I_{max}$ , or  $VA_{max}$  are within the Class 2 circuit limitations as defined in Section 725 of the NEC, Section 16 of the CEC, and Section 725 of NOM-001-SEDE;
- b) an LVLE circuit, when contained within the luminaire; or
- c) A circuit that complies with limited to 15 W of power under normal and single fault conditions, as measured in accordance with the Circuit Power Limit Measurement test in UL 8750 or CSA No. 250.13 as applicable.

**Spray foam compatible luminaire (SPCL)** – Type IC recessed luminaires intended for installation in contact with low density and medium density polyurethane foam thermal insulation.

**Splice** – the joining of conductors:

- a) by welding or soldering their ends together and applying an insulating outer covering that serves as basic insulation; or
- b) using wire connectors, designed and certified for that purpose.

**Strain relief device** – a knot, bushing, clamp, or equivalent device designed to prevent strain from being transmitted through a conductor or cord to a termination point inside a luminaire.

**Tap conductor** – a conductor between the luminaire and the branch circuit.

**Tempered glass** – glass that is heated to near its softening point and then rapidly cooled under rigorous control to enhance its mechanical and thermal endurance by creating a compression stress on all surfaces and edges balanced by tension stress in the core.

**Thermal shock and impact-resistant tempered glass (MEX)** – in Mexico, glass that has undergone a heat treating process to give it certain hardness or elasticity characteristics.

**Through wire** – a current-carrying branch circuit conductor that does not supply the luminaire, but passes through the luminaire wiring compartment or integral junction box.

**User maintenance** – a servicing operation, such as re-lamping or cleaning of the inside surface of an optical part, expected to be carried out by untrained persons.

Notes:

(1) A luminaire having a non-replaceable light source and a sealed optical chamber such that cleaning maintenance is not needed should be regarded as a luminaire that does not require “user maintenance.”

(2) A luminaire designed for mounting at a height greater than 3.6 m (12 ft) from the ground plane, such as in a parking lot or a street light, is an example of a luminaire where servicing is not expected to be carried out by untrained persons. This type of luminaire does not lend itself to “user maintenance.”

**Water shield** – a structural part of a wet location luminaire, relied upon to reduce or prevent the entrance of water into a luminaire or onto current-carrying parts.

**Wire binding screw** – a screw used to secure an electrical conductor.

**Wiring diagram** – a line drawing, graphic, and/or written instructions to identify conductors and make connections to the luminaire.

**Wiring terminal** – pressure or wire binding terminals used for making wiring connections.

## 4 General requirements

### 4.1 Components

4.1.1 Except as indicated in Clause [4.1.2](#), a component of a product covered by this Standard shall comply with the requirements for that component. See Annex [A](#) for a list of standards covering components generally used in the products covered by this Standard. A component shall comply with the ANCE, CSA, or UL Standards as appropriate for the country where the product is to be used.

4.1.2 A component is not required to comply with a specific requirement that:

- a) involves a feature or characteristics not needed in the application of the component in the product covered by this Standard; or
- b) is superseded by a requirement in this Standard.

4.1.3 A component shall be used in accordance with its rating established for the intended conditions of use.

4.1.4 Specific components are accepted as being incomplete in construction features or restricted in performance capabilities. Such components are intended for use only under limited conditions, such as

temperatures not exceeding specified limits, and shall be used only under those specific conditions for which they have been investigated.

4.1.5 (CAN) In Canada, general requirements applicable to these products are provided in CSA C22.2 No. 0.

**4.2 Application of requirements**

4.2.1 The requirements of the national installation codes and other practices of Canada, Mexico, and the United States have been addressed in the requirements of this Standard.

4.2.2 A product intended to be used in Canada, Mexico, and the United States shall comply with the requirements of this Standard for all countries.

4.2.3 A product to be used only in Canada, Mexico, or the United States shall comply with the common requirements of this Standard and the applicable country-specific requirements, where so noted and summarized in [Table 4.2.1](#).

4.2.4 Products intended for use in Mexico shall comply with those requirements listed and summarized in [Table 4.2.2 \(MEX\)](#).

4.2.5 A country specific requirement clause has the same clause number as the requirement, but with the suffix (CAN), (MEX), or (USA).

[Table 4.2.1](#) provides a summary of the country-specific clauses, tables, and figures.

**4.3 Units of measurement**

4.3.1 The values given in SI (metric) units shall be normative. Any other values shall be for information purposes only. See Annex E for metric conversion multipliers.

4.3.2 Temperatures are given in degrees Celsius only.

4.3.3 Unless indicated otherwise, all voltage and current values mentioned in this Standard are root-mean-square (rms).

**Table 4.2.1  
Summary of country-specific requirements**

(See Clauses [4.2.3](#) and [4.2.5](#).)

<b>4 General requirements</b>	
<a href="#">Table 4.2.2 (MEX)</a>	Requirements applicable to Mexico
<b>5 Mechanical construction</b>	
<a href="#">5.7.1.1 (MEX)</a>	Polymeric materials, minimum thickness
<a href="#">Table 5.7.1 (MEX)</a>	Minimum thickness for polymeric materials
<a href="#">5.10.3 (MEX)</a>	Self-threading or sheet-metal screws
<a href="#">5.16.2.7 (MEX)</a>	Borosilicate and tempered glass

**Table 4.2.1 Continued on Next Page**

Table 4.2.1 Continued

**6 Electrical construction**

<a href="#">6.4.1.4</a> (CAN)	Caution marking not required
<a href="#">6.6.3</a> (USA)	Fuseholder not required to disconnect all ungrounded conductors
<a href="#">6.7.1.3</a> (USA)	Screwshell bonding to ground
<a href="#">Figure 6.7.1.1</a> (USA)	Ballast and transformer connection diagrams for United States
<a href="#">6.7.1.4</a> (USA)	Screwshell bonding to ground
<a href="#">6.9.2</a> (CAN)	Conductors for use in Canada
<a href="#">Table 6.9.1</a> (CAN)	CEC conductor temperature rating
<a href="#">6.9.2</a> (USA)	Conductors for use in United States
<a href="#">Table 6.9.2</a> (USA)	NEC conductor temperature and voltage ratings
<a href="#">Table 6.9.3</a> (USA)	Appliance wiring temperature and voltage ratings
<a href="#">6.9.2</a> (MEX)	Conductors
<a href="#">6.9.3</a> (MEX)	Conductors
<a href="#">6.9.4</a> (MEX)	Conductors smaller than 18 AWG
<a href="#">6.14.2.5</a> (MEX)	Lampholder lead pull test – not required
<a href="#">6.15.2.4</a> (CAN), <a href="#">6.15.2.4</a> (MEX)	Crossbar with grounding means not required
<a href="#">6.15.3.4</a> (USA)	Bonding conductor for parts other than ballasts with integral enclosures
<a href="#">6.16.1.5</a> (CAN)	Branch circuit conductor temperature 75 °C
<a href="#">6.19</a> (MEX)	Wire splices and connections

**7 Incandescent luminaires – supplementary requirements**

<a href="#">7.1.2</a> (CAN)	Marking – Caution marking not required
<a href="#">7.2.5.2</a> (CAN)	Marking – Caution marking not required
<a href="#">7.2.6.1</a> (CAN)	Marking – Caution marking not required
<a href="#">7.3.1.2</a> (CAN)	Marking – Caution marking not required
<a href="#">7.3.1.4</a> (USA)	Marking – Lamp barrier marking not required
<a href="#">7.3.2.1</a> (CAN)	Marking – Caution marking not required
<a href="#">7.3.2.3</a> (CAN)	Marking – Caution marking not required

**8 Fluorescent luminaires – supplementary requirements**

<a href="#">8.3.3</a> (CAN)	Flexible supply cords for recessed luminaires
<a href="#">8.5.2</a> (USA)	Luminaires that are test-exempt

**9 HID luminaires – supplementary requirements**

<a href="#">9.4.1.1</a> (MEX)	Luminaires for use with metal halide lamps
<a href="#">9.5.1</a> (CAN)	Marking – Caution marking not required
<a href="#">9.5.3</a> (CAN)	Marking – Caution marking not required
<a href="#">9.7.1</a> (MEX)	Marking – Lamp designation
<a href="#">9.7.7</a> (CAN)	Marking – Caution marking not required

Table 4.2.1 Continued on Next Page

Table 4.2.1 Continued

**11 Surface-mounted luminaires – supplementary requirements**

<a href="#">11.2.5</a> (USA)	Mounting means
<a href="#">11.2.14</a> (MEX)	Safety devices to support pendant luminaires greater than 6.8 kg
<a href="#">11.3.13</a> (CAN)	Additional requirements for lighting poles
<a href="#">11.6.8</a> (USA)	Installation instructions for power supply cords not mounted in place
<a href="#">11.6.11</a> (USA)	Branch circuit conductor temperature 60 °C
<a href="#">11.6.11</a> (CAN)	Branch circuit conductor temperature 75 °C
<a href="#">11.6.11</a> (CAN)	Branch circuit conductor temperature 75 °C
<a href="#">11.7.3</a> (CAN)	Under-cabinet luminaires
<a href="#">11.7.4</a> (MEX)	Pole or arm-mounted luminaires
<a href="#">11.8.1</a> (CAN)	Marking – Not required on carton
<a href="#">11.8.2</a> (USA)	Under-cabinet marking

**12 Recessed luminaires – supplementary requirements**

<a href="#">12.1.1</a> (MEX)	Recessed luminaire supplementary requirements
<a href="#">12.6.2.1</a> (USA)	Tap conductors 24" long
<a href="#">Table 12.6.2.1</a> (USA)	Conductors in fittings
<a href="#">12.6.2.2</a> (USA)	Flexible conduit and fittings
<a href="#">12.7.1.9</a> (USA)	Finishing sections other than by luminaire manufacturer
<a href="#">12.8.1.12</a> (USA)	Marking – vapor barrier marking not required
<a href="#">12.8.2.1</a> (CAN)	Marking – Caution marking not required
<a href="#">12.8.2.5</a> (CAN)	Marking – Caution marking not required

**13 Miscellaneous luminaires – supplementary requirements**

<a href="#">13.2.2.3</a> (USA)	Air-handling luminaires – Material in the air path
<a href="#">13.2.2.5</a> (CAN)	Air-handling luminaires – Plastic diffusers
<a href="#">13.2.2.5</a> (USA)	Air-handling luminaires – Plastic diffusers
<a href="#">13.2.4.3</a> (USA)	Marking – without listed diffuser
<a href="#">13.2.4.4</a> (USA)	Marking – Diffuser dependent on frame, shipped separately
<a href="#">13.2.4.6</a> (MEX)	Caution marking – not required
<a href="#">13.2.4.7</a> (CAN)	Marking – Luminaires in environmental air-handling spaces

**15 Normal temperature test**

<a href="#">Table 15.1.2</a> , Item 5 (CAN)	Outlet box supply conductors for dwelling – wall mount
<a href="#">Table 15.1.2</a> , Item 5 (USA)	Outlet box supply conductors for dwelling – wall mount
<a href="#">15.12</a> (MEX)	Temperature rise

**17 Mechanical tests**

<a href="#">17.5.2.7</a> (MEX)	Insulation resistance after the rain test
<a href="#">17.5.5.2</a> (MEX)	UV exposure conditioning
<a href="#">17.5.12.1</a> (MEX)	Paint adhesion

Table 4.2.1 Continued on Next Page

Table 4.2.1 Continued

<a href="#">17.5.12.2</a> (MEX)	Paint adhesion
<a href="#">17.6.1</a> (MEX)	Hot-wire ignition
<a href="#">17.7.1</a> (MEX)	Glow-wire end-product
<a href="#">17.8.1</a> (MEX)	High-current arc ignition
<a href="#">17.14.1</a> (MEX)	Screw torque
<a href="#">Table 17.14.1</a>	Screw torque
<a href="#">17.36</a> (MEX)	Thermal shock
<a href="#">17.37</a> (MEX)	Vibration
<b>18 Electrical tests</b>	
<a href="#">18.5</a> (MEX)	Insulation resistance
<b>19 Test procedures and apparatus</b>	
<a href="#">19.3.3.1</a> (MEX)	Nominal voltage
<a href="#">19.3.4.1</a> (MEX)	Test voltage
<a href="#">19.6</a> (MEX)	Temperature rise
<a href="#">19.7.2</a> (MEX)	Thermocouple gauge size
<a href="#">19.24.1</a> (MEX)	Five-inch flame test apparatus
<a href="#">19.30.1</a> (MEX)	Vertical burning flame test apparatus
<a href="#">19.33</a> (MEX)	Insulation resistance test apparatus
<a href="#">19.34</a> (MEX)	Vibration test apparatus
<a href="#">Figure 19.34.1</a> (MEX)	Vibration table
<b>20 Marking</b>	
<a href="#">20.2.5</a>	Bilingual marking
<a href="#">20.2.5</a>	Markings in Spanish
<a href="#">20.6</a> (MEX)	Marking requirements in Mexico
<a href="#">20.6.1</a> (MEX)	General
<a href="#">20.6.2</a> (MEX)	Luminaires
<a href="#">20.6.3</a> (MEX)	Instruction sheets
<a href="#">20.6.4</a> (MEX)	Cartons
<b>Annexes</b>	
Annex <a href="#">B</a>	<a href="#">Table 20.1.1</a> List of markings
Annex <a href="#">C</a>	<a href="#">Table 20.1.1</a> List of markings
Annex <a href="#">F</a>	(CAN) Printed circuit boards

**Table 4.2.2 (MEX)  
Requirements applicable to Mexico**

(See Clause [4.2.4](#))

<b><a href="#">1</a> Scope</b>	
<b><a href="#">2</a> Referenced publications</b>	
<b><a href="#">3</a> Definitions</b>	
<b><a href="#">4</a> General requirements</b>	
<a href="#">4.1</a>	Components
<a href="#">4.2.1</a>	Application of national installation codes
<a href="#">Table 4.2.1</a>	Summary of country specific requirements
<a href="#">Table 4.2.2 (MEX)</a>	Requirements specific to Mexico
<b><a href="#">5</a> Mechanical construction</b>	
<a href="#">5.4</a>	Barriers
<a href="#">5.5</a>	Metal thickness for enclosures
<a href="#">5.5.1</a>	Metal thickness for enclosures
<a href="#">Table 5.5.1</a>	Minimum thickness of uncoated sheet metal and extruded aluminum for enclosures
<a href="#">5.5.2</a>	Metal thickness for receptacle mounting
<a href="#">5.6</a>	Corrosion protection
<a href="#">5.6.1</a>	Corrosion protection
<a href="#">5.6.2</a>	Corrosion protection not required
<a href="#">5.6.3</a>	Clause <a href="#">5.6.1</a> does not apply to
<a href="#">5.6.4</a>	Vitreous enamel protection
<a href="#">5.7</a>	Polymeric materials minimum thickness
<a href="#">5.7.1.1 (MEX)</a>	Polymeric materials thickness
<a href="#">Table 5.7.1 (MEX)</a>	Minimum thickness for polymeric material
<a href="#">5.9</a>	Conduit knockouts and twistouts
<a href="#">5.10</a>	Mechanical joints and fastenings
<a href="#">5.10.1</a>	Method of making joint
<a href="#">5.10.2</a>	Self-threading screws
<a href="#">5.10.3 (MEX)</a>	Self-threading screws
<a href="#">5.10.4</a>	Conductor positioning
<a href="#">5.10.5</a>	Self-threading screws extending into wiring compartment
<a href="#">5.11</a>	Means of mounting
<a href="#">5.11.1</a>	Means of mounting
<a href="#">5.12</a>	Movable joints
<a href="#">5.12.1</a>	Movable joints and conductors
<a href="#">5.12.2</a>	Movable joint torsion and pull tests

**Table 4.2.2 (MEX) Continued on Next Page**

**Table 4.2.2 (MEX) Continued**

<a href="#">5.13</a>	Raceway tubing
<a href="#">5.13.1</a>	Raceway tubing
<a href="#">5.14</a>	Conductor protection
<a href="#">5.14.1</a>	Conductor protection
<a href="#">5.16.2.7</a> (MEX)	Borosilicate and tempered glass
<a href="#">5.19</a>	Continuous row mounting
<a href="#">5.19.1</a>	Provision for coupling and marking
<a href="#">5.19.2</a>	Adequate space for conductors
<a href="#">5.20</a>	Raceways
<a href="#">5.20.1</a>	Surface mounted or recessed luminaires
<a href="#">5.20.2</a>	Raceway portion of luminaires
<a href="#">5.20.3</a>	Temperature test requirement
<b>6 Electrical construction</b>	
<a href="#">6.2</a>	Wiring devices
<a href="#">6.2.1</a>	Supplementary requirements
<a href="#">6.2.2</a>	Current carrying parts
<a href="#">6.2.3</a>	Wiring devices rated AC
<a href="#">6.2.4</a>	Wiring devices removable by a tool
<a href="#">6.2.5</a>	Attachment plug ratings
<a href="#">6.3</a>	Lampholders
<a href="#">6.3.1</a>	Lampholder suitability
<a href="#">6.3.2</a>	Lamp-supported lampholder
<a href="#">6.3.3</a>	Husk or sleeve of lampholder
<a href="#">6.7</a>	Ballasts and transformers
<a href="#">6.7.1</a>	General
<a href="#">6.7.1.1</a>	Open circuit voltage
<a href="#">6.7.1.2</a>	Provided with luminaire
<a href="#">6.7.1.3</a>	Grounding
<a href="#">6.7.1.4</a>	Accidental contact
<a href="#">6.7.1.5</a>	Thermal testing of HID ballasts
<a href="#">6.7.2</a>	Luminaires with remote ballasts or transformers
<a href="#">6.7.2.1</a>	Without integral leads
<a href="#">6.7.2.2</a>	Thermal protection
<a href="#">6.7.2.3</a>	Marking
<a href="#">6.7.2.4</a>	Marking
<a href="#">6.9</a>	Conductors and cords
<a href="#">6.9.1</a>	Current-carrying conductors
<a href="#">6.9.2</a> (MEX)	In Mexico conductors minimum of 16 AWG
<a href="#">6.9.3</a> (MEX)	In Mexico conductors smaller than 16 AWG
<a href="#">6.9.4</a> (MEX)	In Mexico conductors smaller than 18 AWG

**Table 4.2.2 (MEX) Continued on Next Page**

Table 4.2.2 (MEX) Continued

<a href="#">6.9.5</a>	Stranded conductor or cord
<a href="#">6.9.6</a>	Conductors or cords pushed back
<a href="#">6.9.7</a>	Temperature rating of conductor
<a href="#">6.9.8</a>	Insulated wire connector voltage rating
<a href="#">6.11</a>	Identification and polarity
<a href="#">6.11.1</a>	Conductor terminal intended for connection with neutral conductor
<a href="#">6.11.2</a>	Insulation of a conductor intended for connection with a neutral conductor
<a href="#">6.11.3</a>	Identified terminal of a wiring device
<a href="#">6.11.4</a>	Polarity marking for a cord-and-plug connected luminaire
<a href="#">6.12</a>	Electrical spacings
<a href="#">6.12.1</a>	Minimum spacings
<a href="#">6.12.3</a>	Measurement of spacings
<a href="#">6.12.4</a>	Spacings at fuses and fuseholders
<a href="#">6.12.5</a>	Determination of spacings
<a href="#">6.12.6</a>	Spacings between uninsulated live parts
<a href="#">6.12.7</a>	Spacings between field wiring terminals
<a href="#">6.12.8</a>	Spacings of a branch circuit conductor terminal
<a href="#">6.12.9</a>	A film-coated conductor
<a href="#">6.12.10</a>	A spade or ring terminal
<a href="#">6.14</a>	Accessibility of live parts
<a href="#">6.14.1</a>	General
<a href="#">6.14.2</a>	Accessibility of uninsulated parts
<a href="#">6.14.3</a>	Accessibility of insulated parts
<a href="#">6.14.4</a>	Parts accessible only during user maintenance
<a href="#">6.15</a>	Grounding and bonding
<a href="#">6.15.1</a>	General
<a href="#">6.15.2.1</a>	Provision for grounding
<a href="#">6.15.2.2</a>	Grounding means location
<a href="#">6.15.2.3</a>	Location of grounding terminal
<a href="#">6.15.2.4 (MEX)</a>	Provision for mounting crossbar
<a href="#">6.15.2.5</a>	Grounding conductor size
<a href="#">6.15.2.6</a>	Grounding conductor termination hardware
<a href="#">6.15.2.7</a>	Grounding conductors for pendant luminaires
<a href="#">6.15.2.8</a>	Identification of insulated grounding conductor
<a href="#">6.15.2.9</a>	A screw used for luminaire grounding
<a href="#">Table 6.15.2.1</a>	Ground screw size
<a href="#">Figure 6.15.2.1</a>	Terminal-conductor relationship
<a href="#">6.15.2.10</a>	Provision for luminaire grounding conductor
<a href="#">6.15.2.11</a>	Terminal plate
<a href="#">6.15.2.12</a>	Terminal block
<a href="#">6.15.2.13</a>	Provision for post top type luminaires

Table 4.2.2 (MEX) Continued on Next Page

**Table 4.2.2 (MEX) Continued**

<a href="#">6.16.2</a>	Conduit connections
<a href="#">6.16.2.1</a>	Closure plugs
<a href="#">6.16.2.2</a>	Conduit openings
<a href="#">Table 6.16.2.1</a>	Dimensions for conduit openings
<a href="#">6.16.2.3</a>	Throat diameters
<a href="#">Table 6.16.2.2</a>	Throat diameters for conduit openings
<a href="#">6.16.2.4</a>	Configurations
<a href="#">6.16.2.5</a>	Conduit bushings
<a href="#">6.17</a>	Wiring compartment and junction box volume for branch circuits
<a href="#">6.17.1</a>	Minimum volume
<a href="#">6.17.2</a>	Calculations
<a href="#">6.17.3</a>	Conductor volume
<a href="#">6.17.4</a>	Wiring
<a href="#">6.17.5</a>	Covers
<a href="#">6.19 (MEX)</a>	Wire splices and connections
<a href="#">6.19.1 (MEX)</a>	Protection of wire splices
<a href="#">6.19.2 (MEX)</a>	Securing of wire splices
<b>7 Incandescent luminaries – supplementary requirements</b>	
<b>8 Fluorescent luminaries – supplementary requirements</b>	
<a href="#">9 HID luminaries – supplementary requirements</a>	
<a href="#">9.3</a>	Lamp containment barriers for metal halide lamps
<a href="#">9.3.1</a>	A luminaire employing a metal halide lamp
<a href="#">9.3.2</a>	Lamp containment barrier security
<a href="#">9.3.3</a>	Open holes in a lamp containment barrier
<a href="#">9.3.4</a>	Lamp containment barrier construction
<a href="#">9.3.5</a>	Minimum thickness
<a href="#">9.3.7</a>	Compliance with the thermal shock test
<a href="#">9.3.8</a>	Compliance with the melt-through test
<a href="#">9.4.1.1 (MEX)</a>	Luminaires for use with metal halide lamps
<a href="#">9.7.1 (MEX)</a>	Marking - Lamp designation
<b>11 Surface-mounted luminaries – supplementary requirements</b>	
<a href="#">11.2</a>	Mounting means
<a href="#">11.2.11</a>	Luminaire supported by a chain or cable
<a href="#">11.2.12</a>	Flexible cord as sole support
<a href="#">11.2.14 (MEX)</a>	Pendant luminaire supported by ceiling grid
<a href="#">11.7</a>	Tests
<a href="#">11.7.1</a>	Normal temperature test

**Table 4.2.2 (MEX) Continued on Next Page**

**Table 4.2.2 (MEX) Continued**

<a href="#">11.7.2</a>	Ceiling or wall-mounted luminaire testing
<a href="#">11.7.3</a>	Luminaire for under-cabinet mounting
<a href="#">11.7.4 (MEX)</a>	Pole or arm-mounted luminaires
<b>13 Miscellaneous luminaries – supplementary requirements</b>	
<b>14 Environmental location of luminaries – supplementary requirements</b>	
<a href="#">14.1.2</a>	Dry, damp, and wet location marking
<a href="#">14.4.2</a>	Corrosion protection
<a href="#">14.4.2.1</a>	Use of materials with Inherent resistance to atmospheric corrosion
<a href="#">14.4.2.2</a>	Protection of exposed parts with surfaces of ferrous metal
<a href="#">14.4.2.3</a>	Protection exemptions
<a href="#">14.4.2.4</a>	Protection exemption
<a href="#">14.4.2.5</a>	Welds in ferrous metals
<a href="#">14.4.2.6</a>	Vitreous enamel protections
<b>15 Normal temperature tests</b>	
<a href="#">15.1</a>	General
<a href="#">15.1.1</a>	Test procedures
<a href="#">15.1.2</a>	Summary of test procedures in <a href="#">Table 15.1.1</a>
<a href="#">Table 15.1.1</a>	Recessed luminaire temperature test
<a href="#">15.1.3</a>	Rated wattage of lamp used
<a href="#">15.1.4</a>	Temperature limits shall not exceed those in <a href="#">Table 15.1.2</a>
<a href="#">Table 15.1.2</a>	Maximum temperature limits
<a href="#">15.2</a>	Surface ceiling luminaires
<a href="#">15.2.1</a>	Luminaire appearance
<a href="#">15.2.2</a>	Test apparatus
<a href="#">15.2.3</a>	Pendant mounted luminaires
<a href="#">15.2.4</a>	Pendant mounted or direct mounted luminaires
<a href="#">15.2.5</a>	Luminaires for a noncombustible surface
<a href="#">15.2.6</a>	Noncombustible marking
<a href="#">15.2.7</a>	Supply conductor temperature
<a href="#">15.2.8</a>	Test lamps
<a href="#">15.2.9</a>	Temperatures limits shall not exceed those in <a href="#">Table 15.1.2</a>
<a href="#">15.3</a>	Surface wall luminaires
<a href="#">15.3.1</a>	Test apparatus
<a href="#">15.3.2</a>	Thermocouple location
<a href="#">15.3.3</a>	Supply conductor temperatures
<a href="#">15.3.4</a>	Test lamps
<a href="#">15.3.5</a>	Temperature limits shall not exceed those in <a href="#">Table 15.1.2</a>
<a href="#">15.12 (MEX)</a>	Temperature rise

**Table 4.2.2 (MEX) Continued on Next Page**

Table 4.2.2 (MEX) Continued

<a href="#">15.12.1</a> (MEX)	Temperature rise test
<a href="#">Table 15.12.1</a> (MEX)	Maximum temperature
<a href="#">Table 15.12.2</a> (MEX)	Insulation of wire splices
<a href="#">15.12.2</a> (MEX)	Temperature limits
<a href="#">15.12.3</a> (MEX)	Ambient temperature
<a href="#">15.12.4</a> (MEX)	Stable temperature
<b>16 Abnormal temperature tests</b>	
<b>17 Mechanical tests</b>	
<a href="#">17.5.2</a>	Rain test
<a href="#">17.5.2.1</a>	Conditions for rain test
<a href="#">17.5.2.2</a>	Replicable parts to be removed
<a href="#">17.5.2.3</a>	Rain test apparatus
<a href="#">17.5.2.4</a>	Mounting instructions
<a href="#">17.5.2.5</a>	Positioning of spray heads
<a href="#">17.5.2.6</a>	Test sequence
<a href="#">Table 17.5.2.1</a>	Rain test operating sequence
<a href="#">17.5.2.7</a>	Rain test pass criteria
<a href="#">17.5.2.7</a> (MEX)	Insulation resistance test
<a href="#">17.5.5.2</a> (MEX)	UV exposure conditioning
<a href="#">17.5.12.1</a> (MEX)	Paint adhesion test
<a href="#">17.5.12.2</a> (MEX)	Paint test criteria
<a href="#">17.6.1</a> (MEX)	Hot-wire ignition
<a href="#">17.7.1</a> (MEX)	Glow-wire end product
<a href="#">17.8.1</a> (MEX)	High-current arc ignition
<a href="#">17.12</a>	Flaming oil
<a href="#">17.14</a>	Self-threading screw torques
<a href="#">17.14.1</a> (MEX)	Self-threading screw torque test
<a href="#">Table 17.14.1</a>	Screw torque
<a href="#">17.15</a>	Loading
<a href="#">17.15.1</a>	Supporting device support
<a href="#">17.15.2</a>	More than one support
<a href="#">17.15.3</a>	Test results
<a href="#">17.22</a>	Tempered glass impact
<a href="#">17.22.1</a>	Breakage by impact
<a href="#">17.22.2</a>	Test temperature
<a href="#">17.22.3</a>	Specimen weight
<a href="#">17.22.4</a>	Test safety
<a href="#">17.22.5</a>	Test procedures
<a href="#">17.22.6</a>	Particle weight

Table 4.2.2 (MEX) Continued on Next Page

**Table 4.2.2 (MEX) Continued**

<a href="#">17.24</a>	Glass support by friction or adhesive
<a href="#">17.24.1</a>	Glass load test
<a href="#">17.24.2</a>	Time of test
<a href="#">17.36</a> (MEX)	Thermal shock
<a href="#">17.36.1</a> (MEX)	Curved borosilicate glass
<a href="#">17.36.2</a> (MEX)	Tempered glass
<a href="#">17.37</a> (MEX)	Vibration
<a href="#">17.39</a>	Ground screw assembly strength
<a href="#">17.40</a>	Cable pull
<a href="#">17.40.2</a>	Aging and dielectric test method - not applicable
<a href="#">17.41</a>	Polymeric impact
<b>18 Electrical tests</b>	
<a href="#">18.5</a> (MEX)	Insulation resistance
<b>19 Test procedures and apparatus</b>	
<a href="#">19.1</a>	Installation and support
<a href="#">19.1.1</a>	Install luminaire to manufacturer's instructions
<a href="#">19.1.2</a>	Adjust luminaire to produce maximum temperature
<a href="#">19.1.3</a>	Luminaire mounted to floor
<a href="#">19.1.4</a>	Pole mounted luminaires
<a href="#">19.2</a>	Temperature test stabilization
<a href="#">19.2.1</a>	Temperature test normal and abnormal
<a href="#">19.2.2</a>	Temperature measured by thermocouples
<a href="#">19.2.3</a>	Ballast and transformer coils measured by thermocouple
<a href="#">19.2.4</a>	Temperatures measured after stabilization
<a href="#">19.3.3.1</a> (MEX)	Nominal voltages for Mexico (incandescent)
<a href="#">19.3.4.1</a> (MEX)	Nominal voltages for Mexico (HID)
<a href="#">19.4</a>	Frequency
<a href="#">19.4.1</a>	Frequency sensitive equipment
<a href="#">19.5</a>	Ambient temperature
<a href="#">19.5.1</a>	Ambient temperature
<a href="#">19.5.2</a>	Ambient temperature measured by thermocouple
<a href="#">19.5.3</a>	Thermocouple immersed in mineral oil
<a href="#">19.5.4</a>	Thermocouple container
<a href="#">19.5.5</a>	Testing at elevated temperatures
<a href="#">19.6</a>	Temperature rise
<a href="#">19.6.1</a> (MEX)	Method for temperature rise test
<a href="#">19.6.2</a> (MEX)	Measuring cold resistance
<a href="#">19.6.3</a> (MEX)	Connect load and energize
<a href="#">19.6.4</a> (MEX)	Measuring hot resistance

**Table 4.2.2 (MEX) Continued on Next Page**

**Table 4.2.2 (MEX) Continued**

<a href="#">19.6.5</a> (MEX)	Time to measure hot resistance
<a href="#">19.6.6</a> (MEX)	Graph hot resistance values
<a href="#">19.6.7</a> (MEX)	Rise of resistance formula
<a href="#">19.7</a>	Thermocouples
<a href="#">19.7.1</a>	Temperatures to be measured by thermocouples
<a href="#">19.7.2</a>	Thermocouple gauge size
<a href="#">19.7.2</a> (MEX)	Thermocouple gauge size
<a href="#">19.7.3</a>	Referee temperature methods
<a href="#">19.7.4</a>	Method of affixing thermocouple
<a href="#">19.7.5</a>	Location of thermocouple for through wiring
<a href="#">19.33</a> (MEX)	Insulation resistance test apparatus
<a href="#">19.34</a> (MEX)	Vibration test apparatus
<a href="#">Figure 19.34.1</a> (MEX)	Vibration table
<b>20 Marking</b>	
<a href="#">20.2.5</a>	Markings in Spanish
<a href="#">20.6</a> (MEX)	Marking requirements for Mexico
<a href="#">20.6.1</a> (MEX)	General
<a href="#">20.6.2</a> (MEX)	Luminaires
<a href="#">20.6.3</a> (MEX)	Instruction sheets
<a href="#">20.6.4</a> (MEX)	Cartons
<b>Annexes</b>	
Annex <a href="#">A</a>	Standards for components
Annex <a href="#">C</a> (MEX)	Markings – Spanish translations
<a href="#">Table C.1</a> (MEX)	Markings – Spanish translations
Annex <a href="#">I</a>	Factory production tests

## 5 Mechanical construction

### 5.1 General

5.1.1 The requirements in Clause [5](#) shall be used in conjunction with the applicable supplementary requirements in this Standard.

5.1.2 A part removed during user maintenance shall be:

- a) designed to prevent replacement in a position that would affect the intended operation of the luminaire; or
- b) marked to indicate proper replacement, in accordance with [Table 20.1.1](#), Item 1.33.

5.1.3 There shall be no sharp edges, burrs, or method of construction that can damage electrical insulation or reduce electrical spacings.

## 5.2 Assembly and packaging

5.2.1 All splices and electrical connections shall be completed at the factory, unless packaging requires partial disassembly. Only assembly and electrical connections that can be accomplished with ordinary tools or tools supplied with the luminaire shall be completed at the installation site.

5.2.2 A luminaire that requires partial assembly in the field shall be provided with assembly instructions as specified in [Table 20.1.1](#), Item 1.33.

5.2.3 All the parts required to complete a luminaire shall be shipped together, or shipped separately and marked in accordance with [Table 20.1.1](#), Item 1.8.

5.2.4 Parts such as decorative glassware may be shipped separately and do not require identification.

5.2.5 An unassembled luminaire with accessible non-current-carrying parts that can be energized after the luminaire is installed shall be provided with means for fastening and bonding those parts. The use of screws or snap-in or tab-mounted parts shall meet the intent of this requirement.

5.2.6 The number of conductors shall not exceed 5 when using a twist-on wire connector for field wire connection.

5.2.7 Conductors intended for field connection shall have matching identification by color, number, letter, or other acceptable means.

5.2.8 A field connection between conductors of adjoining sections shall be accessible for inspection without the disconnection of any portion of the wiring.

## 5.3 Enclosures

5.3.1 A luminaire enclosure shall perform the following functions:

- a) reduce the risk of contact with live parts;
- b) enclose electrical parts and components that can involve a risk of fire;
- c) protect internal parts from mechanical damage; and
- d) protect internal parts from the environment.

5.3.2 An enclosure shall be constructed of metal (see Clause [5.5](#)), glass (see Clause [5.16](#)), ceramic [3 mm (0.118 in) minimum thickness], or a polymeric material (see Clause [5.7](#)).

5.3.3 All splices, open coil devices, capacitors, live parts (including traces on a printed circuit board having voltage levels that present a risk of shock or a risk of fire), leads or terminals for field connection of supply wires, and other arcing live parts shall be provided with an enclosure.

## 5.4 Barriers

5.4.1 A barrier shall be constructed of one of the following:

- a) ferrous or nonferrous metal at least 0.41 mm (0.016 in) thick;
- b) glass or ceramic at least 3 mm (0.118 in) thick;

- c) impregnated glass fiber sleeving at least 0.25 mm (0.010 in) thick that is rated for the temperature involved;
- d) vulcanized fiber at least 0.71 mm (0.028 in) thick; or
- e) a polymeric material that complies with Clause [5.7.1.7](#).

5.4.2 A barrier, other than of polymeric material, may be of a thickness less than that specified in Clause [5.4.1](#) if it complies with the barrier strength test of Clause [17.1](#).

## 5.5 Metal thickness for enclosures

5.5.1 The thickness of an enclosure material constructed of:

- a) sheet metal and extruded aluminum shall be in accordance with [Table 5.5.1](#) or shall comply with the metal thickness equivalency test of Clause [17.2](#); and
- b) cast metal shall be in accordance with [Table 5.5.2](#) or shall comply with the metal thickness equivalency test of Clause [17.2](#).

**Table 5.5.1**  
**Minimum thickness of uncoated sheet metal and extruded aluminum for enclosures**

(See Clauses [5.5.1](#), [12.3.7](#), [12.3.11](#), [13.3.2.2](#), and [17.2.5.1.1](#), and [Table 5.5.2](#).)

Specific construction		Steel				Copper, brass, aluminum sheet, and extruded aluminum			
		Unreinforced		Reinforced		Unreinforced		Reinforced	
		mm	(in)	mm	(in)	mm	(in)	mm	(in)
At opening for conduit connection		0.66	(0.026)	0.66	(0.026)	0.81	(0.032)	0.81	(0.032)
Length more than 660 mm (26 in)	No electrical component support	0.51	(0.020)	0.41	(0.016)	0.56	(0.022)	0.43	(0.017)
	Electrical component support	0.66	(0.026)	0.51	(0.020)	0.71	(0.028)	0.56	(0.022)
Length not more than 660 mm (26 in)	No electrical component support	0.41	(0.016)	0.33	(0.013)	0.51	(0.020)	0.41	(0.016)
	Electrical component support	0.51	(0.020)	0.41	(0.016)	0.64	(0.025)	0.51	(0.020)
Length not more than 380 mm (15 in)	No electrical component support	0.41	(0.016)	0.33	(0.013)	0.51	(0.020)	0.41	(0.016)
	Electrical component support	0.41	(0.016)	0.41	(0.016)	0.51	(0.020)	0.51	(0.020)

### NOTES

- 1 "Reinforced" refers to a form of construction that provides equivalent mechanical strength.
- 2 "No electrical component support" refers to the minimum thickness required for mounting of non-electrical parts.
- 3 Examples of acceptable methods of reinforcement are
  - a) a single piece of sheet metal that is formed to result in a maximum internal angle of 120 degrees;
  - b) 13 × 13 mm (0.5 × 0.5 in) 90 degrees formed from sheet steel, 0.81 mm (0.032 in) minimum thickness, used to divide a surface into small sections and, unless along the greater dimension, are additionally secured to the adjacent sides of the enclosure;
  - c) flat steel bars, 9.5 mm (0.375 in) wide minimum, 3.2 mm (0.125 in) thick minimum, used and secured as in (b); and

**Table 5.5.1 Continued on Next Page**

**Table 5.5.1 Continued**

Specific construction	Steel		Copper, brass, aluminum sheet, and extruded aluminum	
	Unreinforced mm (in)	Reinforced mm (in)	Unreinforced mm (in)	Reinforced mm (in)
d) curved, ribbed, or flanged surfaces. A surface is considered to be flanged if the two opposite sides are bent 13 mm (0.5 in) or wider at right angles to the surface.				
4 For coated or finished metals, the minimum thickness is considered to be obtained if the overall thickness exceeds that required in this table by at least 0.013 mm (0.0005 in) for each side coated or finished.				
5 "Length" refers to the longest straight line that can be drawn on any unreinforced flat section.				

**Table 5.5.2  
Minimum thickness of cast metal for enclosures**

(See Clauses [5.5.1](#), [12.3.7](#), and [12.3.11](#).)

Material	Unreinforced		Reinforced	
	mm	(in)	mm	(in)
Cast metal	3.2	(0.126)	2.4	(0.094)
Cast malleable iron	2.4	(0.094)	1.6	(0.063)
Permanent mold – cast aluminum	2.4	(0.094)	1.6	(0.063)
Die-cast metal	2.0	(0.079)	1.2	(0.047)
NOTE Reinforced dimensions are acceptable at the root of threads, for a surface that is curved or otherwise reinforced, and for a surface of such shape or size, or both, that the strength contemplated is provided. Areas for breakouts or similar reasons, may have thinner sections providing the strength of structure is not affected, but in no case be thinner than permitted for sheet metal. See Clause <a href="#">5.5.1</a> and <a href="#">Table 5.5.1</a> .				

5.5.2 The thickness of a metal surface for mounting a convenience receptacle of the snap-in type shall comply with the receptacle manufacturer's metal thickness specification but shall not be less than 0.51 mm (0.020 in).

**5.6 Corrosion protection**

5.6.1 All ferrous metal parts, including hinges, bolts, and fasteners, exposed after assembly shall be protected against corrosion by painting, coating, or plating. Copper, aluminum, alloys of copper and aluminum, stainless steel, and similar materials having inherent resistance to atmospheric corrosion are not required to have additional corrosion protection.

5.6.2 Edges, punched holes, and spot welds in prefinished steel, enclosed steel pipe, and hanger locations for painting or plating in ferrous metals do not require any corrosion protection.

5.6.3 The requirements of Clause [5.6.1](#) shall not apply to the following:

- a) bearings, sliding surfaces of a hinge or shaft, hinge pins, and similar parts located on the exterior of enclosures where such protection is not practicable; and
- b) decorative parts.

5.6.4 Vitreous enamels may be used as a protective coating for ferrous sheet metal having a minimum thickness of 0.6 mm (0.025 in).

## 5.7 Polymeric materials

### 5.7.1 General

5.7.1.1 Polymeric materials shall comply with the applicable requirements of Clauses [5.7.1.2](#) to [5.7.1.8](#).

5.7.1.1 (MEX) In Mexico, polymeric materials shall have minimum thickness in accordance with [Table 5.7.1 \(MEX\)](#).

**Table 5.7.1 (MEX)**  
**Minimum thickness for polymeric materials**

[See Clause [5.7.1.1](#) (MEX).]

Specific construction		Polymeric sheet			
		Un-reinforced		Reinforced	
		mm	(in)	mm	(in)
At opening for conduit connection		1.016	(0.040)	1.016	(0.040)
Length more than 660 mm	No electrical component support	0.81	(0.032)	0.81	(0.032)
	Electrical component support	1.016	(0.040)	1.016	(0.040)
Length larger than 380 mm and up to 660 mm	No electrical component support	0.81	(0.032)	–	–
	Electrical component support	0.81	(0.032)	–	–
Length not more than 380 mm	No electrical component support	0.71	(0.028)	–	–
	Electrical component support	0.71	(0.028)	–	–
NOTES					
1 "Reinforced" refers to a form of construction that provides equivalent mechanical strength.					
2 "No electrical component support" refers to the minimum thickness required for mounting of non-electrical parts.					
3 Examples of acceptable methods of reinforcement are curved, ribbed, and flanged surfaces.					
4 "Length" refers to the longest straight line that can be drawn on any un-reinforced flat section.					

5.7.1.2 An enclosure of polymeric material where all live parts are insulated or permanently spaced more than 0.8 mm (0.032 in) from the enclosure shall:

- a) have a minimum 5VA flammability rating or comply with the five-inch flame test of Clause [17.3](#);
- b) have a temperature rating equal to or greater than its maximum operating temperature in the luminaire;
- c) comply with the polymeric impact test of Clause [17.41](#) for the parts that can be subject to impact after installation;
- d) comply with the mold stress-relief test of Clause [17.4](#) for molded or formed thermoplastic material;
- e) comply with the abnormal overlamping operation test in Clause [16.5](#); and

f) be resistant to UV radiation where the material is exposed to the sun or to fluorescent or unjacketed metal halide light sources. The material shall be UV rated, tested in accordance with the UV exposure test of Clause [17.5.5](#), or comply with the exposure to UV light test of UL 746C.

5.7.1.3 In lieu of Clause [5.7.1.2](#) (a), an LED lens or diffuser that serves as an enclosure for LED arrays, LED modules, and similar components where all live parts are insulated or spaced more than 0.8 mm (0.032 in) from the lens or diffuser shall have a minimum V-0 flammability rating or comply with the vertical flame test of Clause [17.26](#) and shall comply with the minimum flammability requirement in Clause [5.7.1.2](#) (b) through (d). Components required to have an enclosure by other clauses of the Standard shall be required to meet Clause [5.7.1.2](#). This Clause does not apply to compartments containing splices, open coils, fuse holders, or arcing components.

5.7.1.4 An enclosure of polymeric material where any uninsulated live parts are located within 0.8 mm (0.032 in) of the enclosure shall comply with Clause [5.7.1.2](#) and shall:

a) have a minimum hot-wire ignition rating (HWI) of 15 s or comply with the hot-wire ignition test of Clause [17.6](#) or the glow-wire end product test of Clause [17.7](#); and

b) have a minimum high-current arc resistance to ignition rating (HAI) of 15 arcs or comply with the high-current arc ignition test of Clause [17.8](#) or the end-product arc resistance test of Clause [17.9](#).

5.7.1.5 An enclosure of polymeric material where arcing parts, such as unenclosed switch contacts, are located:

a) more than 13 mm (0.5 in) from the enclosure shall comply with Clause [5.7.1.2](#);

b) within 13 mm (0.5 in) of the enclosure shall comply with Clause [5.7.1.2](#) and the hot-wire ignition test of Clause [17.6](#) or the glow-wire end product test of Clause [17.7](#).

5.7.1.6 A polymeric part used to suspend another part shall:

a) have a minimum HB flammability rating or comply with the horizontal burning flame test of Clause [17.25](#);

b) have a temperature rating equal to or greater than the highest temperature measured on the part during the normal temperature test of Clause [15](#); and

c) comply with the polymeric support test of Clause [17.10](#) when the suspended part weighs more than 0.9 kg (2 lb).

5.7.1.7 A polymeric material used as a barrier shall:

a) have a minimum HB flammability rating or comply with the horizontal burning flame test of Clause [17.25](#);

b) have a temperature rating equal to or greater than its maximum operating temperature in the luminaire;

c) for molded or formed thermoplastic parts, comply with the mold stress-relief test of Clause [17.4](#); and

d) comply with the barrier strength test of Clause [17.1](#).

5.7.1.8 A polymeric material that can affect the integrity of a grounding or bonding means shall:

a) have a minimum HB flammability rating or comply with the horizontal burning flame test of Clause [17.25](#);

b) have a temperature rating equal to or greater than its maximum operating temperature in the luminaire; and

c) in the case of thermoplastic parts, also comply with the mold stress-relief test of Clause [17.4](#) followed by the bonding circuit impedance test of Clause [18.2](#).

## 5.7.2 Metallized polymeric parts

5.7.2.1 Metallized polymeric parts coated with an electrically conductive material shall comply with the metallized polymeric parts coating adhesion test of Clause [17.11](#) if peeling of the conductive material from the polymeric parts can result in the risk of electric shock, fire, or operating temperature limits being exceeded.

5.7.2.2 The metallized parts that are accessible during user maintenance or component replacement without the use of tools and can involve the risk of shock shall be bonded to ground in accordance with Clause [6.15.3](#).

## 5.8 Baffles

5.8.1 A baffle shall:

- a) be made of metal that complies with the appropriate requirements of Clause [5.5](#); or
- b) be made of nonmetallic material that complies with the five-inch flame test of Clause [17.3](#) or has a minimum 5VA flammability rating; and
- c) if made of perforated material, have one of the following constructions:
  - 1) a galvanized steel screen, or the equivalent, having a 14 x 14 mesh per square inch and wire with a minimum diameter of 0.46 mm (0.018 in);
  - 2) a perforated metal plate, having evenly distributed openings that are not more than 11 per cm<sup>2</sup> (71 per in<sup>2</sup>) and that have a maximum dimension of 1.6 mm (0.063 in); or
  - 3) a perforated panel that complies with the flaming oil test of Clause [17.12](#).

## 5.9 Conduit knockouts and twistouts

5.9.1 A conduit knockout or twistout shall be secured in place so it can be removed without distorting the enclosure but it remains in place during normal handling and shall comply with the conduit knockout and twistout test of Clause [17.13](#).

## 5.10 Mechanical joints and fastenings

5.10.1 The method of making a joint shall provide strength and rigidity and prevent turning that can result in movement of conductors or wiring devices after the assembly is completed.

5.10.2 Self-threading screws, including sheet-metal screws, used to secure electrical or enclosure component parts in place or together, shall comply with the self-threading screw torque test in Clause [17.14](#), when the screw threads into nonferrous metal or polymeric material.

5.10.3 A self-threading or sheet metal screw used for mounting or supporting a part that weighs more than 3.4 kg (7.5 lb) per screw shall comply with the self-threading screw torque test in Clause [17.14](#).

5.10.3 (MEX) In Mexico, a self-threading or sheet-metal screw used for mounting or supporting a part shall comply with the self-threading screw torque test of Clause [17.14.1](#) (MEX).

5.10.4 If threads of sheet-metal or self-tapping screws extend into a wiring compartment for a distance of more than 5 mm (0.2 in), the conductors shall be reliably positioned away from the projecting screws, or the conductors shall be sufficiently loose to prevent damage to the insulation.

5.10.5 Frictional contact between parts alone shall not be acceptable as means of preventing turning. Turning may be prevented by the use of a suitable lockwasher properly applied, a locknut seated against another nut, or an equivalent threaded assembly, or by some other equivalent method such as swaging or suitable adhesive.

5.10.6 A sheet metal nut for bolts larger than 6.4 mm (0.250 in) in diameter may be used to prevent turning or loosening if it is not depended upon for mechanical strength.

5.10.7 Sheet-metal nuts fabricated of heat-treated steel may be used:

- a) for assembly;
- b) to prevent turning of threaded tubing no larger than 1/4 IPS; or
- c) on bolts or studs that are no larger than 6.4 mm (0.250 in) in diameter.

5.10.8 When used as a supporting device, unthreaded tubing joints shall comply with the loading test of Clause [17.15](#).

5.10.9 Fasteners, such as ferrules secured to the end of steel support cable used to support all or part of the luminaire, shall comply with the loading test of Clause [17.15](#).

5.10.10 Cast metal fasteners, such as chains, hooks, threaded nipples, and hickies, used to support the luminaire or sections of the luminaire, shall comply with the loading test of Clause [17.15](#).

5.10.11 Enclosure parts shall be secured by positive mechanical means, such as screws, welding, or interference fit.

5.10.12 Enclosure parts may be secured by frictional contact alone under the following conditions:

- a) the part does not have a knockout or conduit opening and complies with the snap-in or tab-mounted parts pull test without conduit opening of Clause [17.16](#); or
- b) the part has a knockout or conduit opening and complies with the snap-in or tab-mounted parts pull tests with conduit opening of Clause [17.17](#).

5.10.13 Snap-in and tab-mounted parts that are secured together by interference fit alone and that have a knockout or conduit opening shall comply with the snap-in and tab-mounted parts test with conduit opening of Clause [17.17](#).

5.10.14 Decorative parts of a luminaire secured by friction alone or an adhesive alone shall comply with the loading test in Clause [17.15](#).

5.10.15 An assembly of glass and frame or glass and recessed trim, where the combination is secured to the luminaire using friction such as spring loaded clips, shall comply with the loading test in Clause [17.15](#).

## 5.11 Means of mounting

5.11.1 A luminaire shall have means for mounting, and if special hardware is required, the hardware shall be provided and shall comply with the loading test of Clause [17.15](#).

## 5.12 Movable joints

5.12.1 A movable joint, such as a swivel joint or telescoping arm, containing conductors shall be constructed so that movement of the joint will not result in damage to the insulation of conductors. Rotation shall be limited to 370 degrees, or the movable joint shall comply with the movable joint rotation test of Clause [17.19](#).

5.12.2 A movable joint containing conductors shall comply with the movable joint torsion and pull tests of Clause [17.20](#) and shall remain intact and operable.

## 5.13 Raceway tubing

5.13.1 Tubing shall be free from kinks or cracks, and if it is:

- a) unthreaded metal tubing, it shall be at least 0.5 mm (0.020 in) thick;
- b) threaded metal tubing, it shall be at least 1.0 mm (0.040 in) thick; or
- c) metal tubing with rolled threads, it shall be at least 0.5 mm (0.020 in) thick.

## 5.14 Conductor protection

5.14.1 Conductors that pass over edges or through openings in metal shall be secured from contacting the edges or be protected from cutting and abrasion. For sheet metal less than 1.1 mm (0.042 in) thick, protection shall be provided by one of the following methods:

- a) rolling the edge of the metal not less than 120 degrees;
- b) a bushing or grommet of a material other than rubber at least 1.2 mm (0.047 in) thick; or
- c) glass sleeving at least 0.25 mm (0.010 in) thick.

## 5.15 Strain relief

### 5.15.1 General

5.15.1.1 A strain-relief shall be provided for a flexible cord or conductor that can be subjected to pulling, pushing, flexing, or twisting after the luminaire has been installed.

5.15.1.2 A strain-relief device, including a bushing with an integral strain-relief means, shall be designed to limit the holding pressure without damaging the cord jacket or conductor insulation.

### 5.15.2 Flexible cord

5.15.2.1 A strain relief for a flexible cord shall comply with the 15.9 kg (35 lb) strain-relief test of Clause [17.21.1](#).

5.15.2.2 A strain relief shall be provided at both ends of a flexible cord when the cord supports a luminaire or luminaire part.

5.15.2.3 A strain relief shall be provided at only one end of a flexible cord under the following conditions:

- a) the cord is attached directly to a wiring device, such as an attachment plug, by the wiring device manufacturer; or
- b) comply with the strain-relief test of Clause [17.21.1](#).

5.15.2.4 A strain relief shall not be required at the canopy end of a cord-pendant luminaire if instructions, in accordance with [Table 20.1.1](#), Item 1.33, are furnished with the luminaire to show the method of strain relief that shall be applied in the field, such as a knot in the cord.

5.15.2.5 A cord-equipped luminaire without an attachment plug shall be provided with one of the following:

- a) a strain-relief device for use in a standard conduit opening; or
- b) instructions to identify the strain relief to be used, in accordance with [Table 20.1.1](#), Item 1.33.

**5.15.3 Conductors**

5.15.3.1 The strain relief for a conductor shall comply with the pull test of Clause [17.21.2](#).

**5.16 Glass**

**5.16.1 General**

5.16.1.1 Edges of glass accessible during normal use or maintenance shall be seamed, swiped, fire-polished, or similarly treated to eliminate sharpness.

**5.16.2 Minimum thickness**

5.16.2.1 The minimum thickness and exposed area of glass used as an enclosure shall be in accordance with [Table 5.16.2.1](#).

**Table 5.16.2.1  
Thickness of glass panels**

(See Clauses [5.16.2.1](#) to [5.16.2.5](#).)

Exposed area of glass		Minimum thickness of glass			
		Flat glass		Curved glass	
cm <sup>2</sup>	(in <sup>2</sup> )	mm	(in)	mm	(in)
0 – 968	(0 – 150)	2.11	(0.083)	2.11	(0.083)
969 – 3226	(150 – 500)	2.54	(0.100)	2.11	(0.083)
3227 – 7097	(500 – 1100)	3.56	(0.140)	2.54	(0.100)
7098 – 9316	(1100 – 1444)	3.56	(0.140)	2.54	(0.100)

5.16.2.2 The minimum thickness and exposed area of flat glass panels, smooth or otherwise, shall be in accordance with [Table 5.16.2.1](#).

5.16.2.3 The minimum thickness and exposed area of glass that is curved or bent, or of globes of any shape shall be in accordance with [Table 5.16.2.1](#), unless the exposed area is less than 1774 cm<sup>2</sup> (275 in<sup>2</sup>).

5.16.2.4 Untempered glass that is not in accordance with the minimum thickness shown in [Table 5.16.2.1](#) shall provide equivalent mechanical strength.

5.16.2.5 Tempered glass that is not in accordance with the minimum thickness and exposed area shown in [Table 5.16.2.1](#) shall comply with the tempered glass impact test of Clause [17.22](#).

5.16.2.6 The minimum thickness of fluted, ribbed, or patterned glass shall be measured from a valley of one side to the other flat side, or between valleys on opposite sides.

5.16.2.7 (MEX) In Mexico, borosilicate and tempered glass shall comply with the thermal shock tests of Clause [17.36](#) (MEX).

## 5.17 Glass support

5.17.1 Glass shall be secured in place and shall not be subjected to undue strain that can result in breakage or release during normal use or maintenance.

5.17.2 Glass mounted in a frame that is required to be opened or removed for maintenance shall be secured to the frame.

5.17.3 Clips that are used to secure a glass panel to the frame shall overlap the glass at least 5 mm (0.20 in).

5.17.4 An adhesive material used as the sole support of glassware shall comply with the adhesive support test of Clause [17.23](#).

5.17.5 A channel or frame for holding glass diffusers shall be:

- a) steel at least 0.4 mm (0.016 in) thick;
- b) nonferrous metal at least 0.5 mm (0.020 in) thick; or
- c) polymeric material at least 1.5 mm (0.059 in) thick.

5.17.6 Glass globes, glass panels, or decorative glass parts shall be secured by one or more of the following means:

- a) a circular fitter with at least three supports;
- b) a threaded stud and nut;
- c) a threaded glass part and associated fitter;
- d) a frictional contact assembly that complies with the glass support test of Clause [17.24](#);
- e) an adhesive that complies with Clause [5.17.4](#);
- f) its own weight in a frame or fitter that is not hinged; and
- g) a straight rod with a stop or a hook through a hole in the glass.

## 5.18 Thermal insulation

5.18.1 Thermal insulation shall be fire-resistant material, such as glass fiber, inorganic material, or polymeric material.

5.18.2 A polymeric thermal insulation material shall:

- a) have a temperature rating equal to or greater than the operating temperature in the luminaire; and
- b) have a minimum HB flammability rating, or comply with the horizontal burning flame test of Clause [17.25](#).

5.18.3 Thermal insulation shall be reliably secured in place. It shall be attached to the luminaire in the correct position by at least one of the following means:

- a) staples or bolts;
- b) adhesive applied to at least one-third of the surface of the insulation;
- c) parts of the luminaire that do not have to be removed for installation. A supply conductor projecting through the insulation is not acceptable for securing the insulation in place; and
- d) other means if investigated and found to be mechanically equivalent.

5.18.4 Thermal insulation shall not be located within 6.4 mm (0.25 in) of any opening for the connection of conduit unless the insulation is attached to a cover or other part that will be removed when conduit is being attached to the luminaire.

5.18.5 Glass fiber thermal insulation provided as an integral part of the luminaire shall have a minimum density of 9.6 kg/m<sup>3</sup> (0.6 lb/ft<sup>3</sup>).

## 5.19 Continuous row mounting

5.19.1 A luminaire intended for continuous row mounting shall have provision for a coupling method and be marked in accordance with [Table 20.1.1](#), Item 2.16.

5.19.2 A luminaire intended for continuous row mounting shall have adequate space for at least four 12 AWG branch circuit conductors.

## 5.20 Raceways

5.20.1 The requirements in Clause [5.20](#) shall apply to surface-mounted or recessed luminaires intended to serve as a raceway for conductors of a circuit other than the conductors of the branch-circuit supplying the luminaire.

5.20.2 The raceway portion of a luminaire shall comply with the applicable requirements of UL 5 or CSA C22.2 No. 62.

5.20.3 The luminaire shall comply with the temperature test of Clause [15.11](#) and be marked as suitable for use as a raceway, in accordance with [Table 20.1.1](#), Item 1.7.

## 6 Electrical construction

### 6.1 General

6.1.1 The requirements in Clause [6](#) shall be used in conjunction with the applicable supplementary requirements in this Standard.

6.1.2 Current-carrying parts shall be copper, copper alloy, nickel alloy, or stainless steel, unless otherwise specified in this Standard.

## 6.2 Wiring devices

6.2.1 A wiring device shall be rated for the temperatures, locations, voltage, and current encountered during normal operation.

6.2.2 A luminaire incorporating a wiring device rated for ac use shall be marked with the frequency or for ac use only, in accordance with [Table 20.1.1](#), Item 1.4 or 3.7.

6.2.3 A wiring device shall be prevented from any turning that can apply tension to conductor connections, result in damage to the conductor, or otherwise adversely affect the assembly. Friction alone between the mating parts of the assembly shall not be acceptable as a means to prevent turning.

6.2.4 Parts of wiring devices that are removable from outside the enclosure without the use of ordinary tools shall not result in access to live parts within the enclosure.

6.2.5 The rating of an attachment plug assembled to a flexible cord for connection to a branch circuit shall comply with [Table 6.2.1](#).

**Table 6.2.1**  
**Attachment plug ratings for cord-connected luminaires**

(See Clause [6.2.5](#))

Maximum luminaire input rating in amperes	Minimum attachment plug rating in amperes
12	15
16	20
24	30
40	50

## 6.3 Lampholders

6.3.1 A lampholder of a luminaire shall be suitable for the application.

6.3.2 A lamp-supported lampholder shall be provided with stranded conductors.

6.3.3 A husk or sleeve made of treated cellulosic fibre, provided to electrically insulate the terminals and screwshell of a lampholder, shall be at least 0.8 mm (0.032 in) thick and shall be positively retained. If the husk or sleeve is not positively retained and the wire terminals of the lampholder are accessible with the husk or sleeve removed, they shall be additionally enclosed in accordance with Clause [5.3](#).

6.3.4 The screwshell of a lampholder directly supplied by the branch circuit shall be connected to the neutral grounded conductor.

**6.4 Switches**

**6.4.1 General**

6.4.1.1 A switch shall have a minimum ampere rating equal to the total load current it controls multiplied by the load factor shown in [Table 6.4.1.1](#).

6.4.1.2 A switch shall disconnect all of the ungrounded conductors of a supply circuit simultaneously, except as specified in Clause [6.4.1.4](#).

6.4.1.3 A single-pole switch shall not be connected in the neutral grounded conductor.

6.4.1.4 When a single-pole photocontrol switch is used on a line-to-line supply, the luminaire shall be marked with a caution to disconnect the power before servicing, in accordance with [Table 20.1.1](#), Items 3.19 and 3.6.

6.4.1.4 (CAN) In Canada, the caution marking of [Table 20.1.1](#), Item 3.19, shall not be required.

6.4.1.5 A luminaire provided with a receptacle for a photocontrol shall be:

- a) shipped with the control or shorting plug; or
- b) marked to require the installation of the control or plug, in accordance with [Table 20.1.1](#), Item 1.20.

**Table 6.4.1.1  
Switch rating load factor**

(See Clause [6.4.1.1](#) and [H.6.4.1](#).)

Type of load	Special use switches				General use switches
	L-rated (ac only)	T-rated (ac/dc)	Ampere rated (ac only)	Ampere rated (ac/dc)	Ampere rated (ac only)
Tungsten filament	1	1	3	3	1
Inductive	1	1	2	2	1
Receptacle	1	1	3	3	1

**6.4.2 Interlock switches**

6.4.2.1 An interlock switch shall be rated for the load it controls or shall comply with Clauses [6.4.2.2](#) to [6.4.2.4](#).

6.4.2.2 A polymeric switch enclosure shall:

- a) have a minimum V-2 flammability rating, or shall comply with the vertical burning flame test of Clause [17.26](#) or the needle flame test of Clause [17.27](#); and
- b) have a temperature rating suitable for the temperature attained during the normal temperature test of Clause [15](#).

6.4.2.3 Current-carrying parts shall be copper, copper alloy, or stainless steel, except that stainless steel shall not be used for quick-connect terminals, solder terminals, and arcing parts.

6.4.2.4 An interlock switch shall comply with the interlock switch endurance test of Clause [18.3](#).

## 6.5 Receptacles

6.5.1 A convenience receptacle in a luminaire shall be a grounding type and marked for maximum load in accordance with [Table 20.1.1](#), Item 3.3 or 3.4.

6.5.2 A convenience receptacle shall not be provided in a ground-mounted recessed or ceiling-mounted luminaire.

6.5.3 A luminaire may be provided with a maximum of one duplex or two single convenience receptacles.

## 6.6 Fuses and fuseholders

6.6.1 A replaceable fuse shall be of the type that requires mounting in a fuseholder.

6.6.2 The fuse identification and ampere rating shall be marked on or adjacent to the fuseholder as specified in [Table 20.1.1](#), Item 3.5.

6.6.3 A fuseholder shall disconnect all ungrounded conductors of the supply circuit simultaneously during fuse replacement.

6.6.3 (USA) In the United States, the fuseholder is not required to disconnect all ungrounded conductors during fuse replacement.

6.6.4 A fuse shall not be connected in the neutral grounded conductor.

## 6.7 Ballasts and transformers

### 6.7.1 General

6.7.1.1 A luminaire incorporating a ballast or transformer having an open circuit voltage of more than 1000 V shall be marked not for use in dwellings, in accordance with [Table 20.1.1](#), Item 2.5.

6.7.1.2 A ballast or transformer required to operate lamps of the type and wattage for which the luminaire was designed shall be provided with the luminaire and shall be wired in accordance with the diagram or instructions on or with the ballast. For luminaires designed for use with remote ballasts, see also Clause [6.7.2](#).

6.7.1.3 When a luminaire is intended to be connected to the line and neutral grounded conductors of a branch circuit, as shown in [Figure 6.7.1.1](#), and is provided with:

a) an auto-transformer or an auto-transformer-type ballast, the screwshell of the lampholder shall be connected to the neutral grounded conductor, unless provision is made to protect against accidental contact with the lamp screwbase during insertion or removal of the lamp; or

b) an isolating-type transformer or ballast, the screwshell of the lampholder shall be separately bonded to ground, unless provision is made to protect against accidental contact with the lamp screwbase during insertion or removal of the lamp.

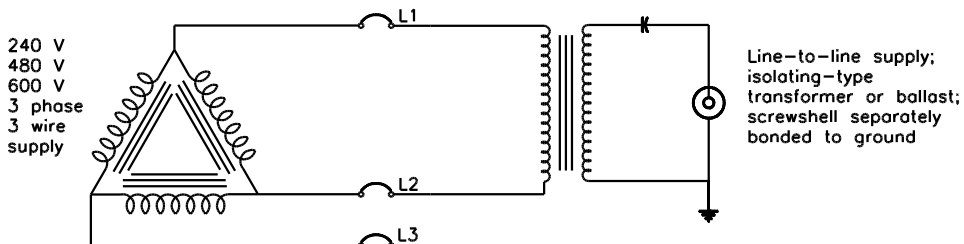
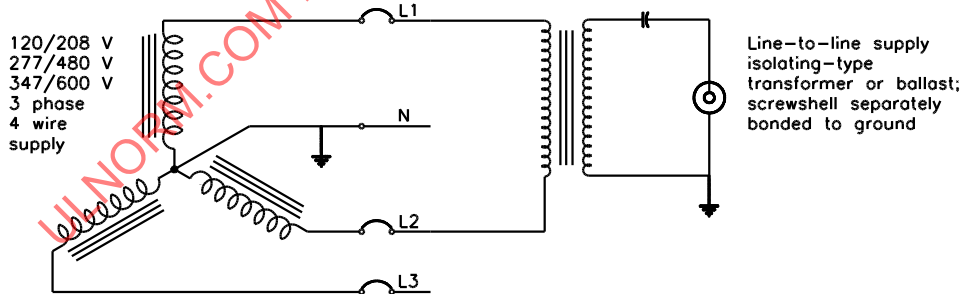
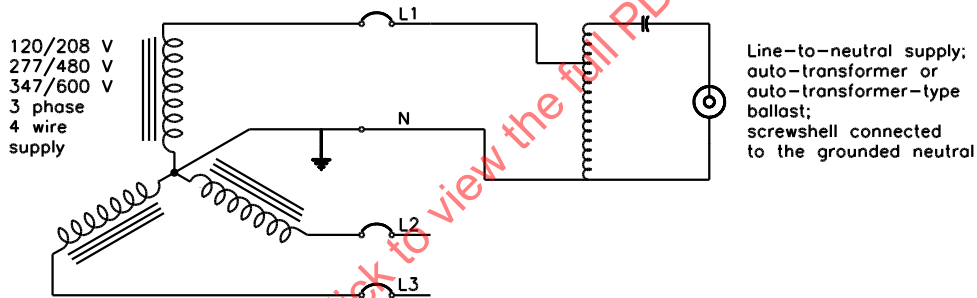
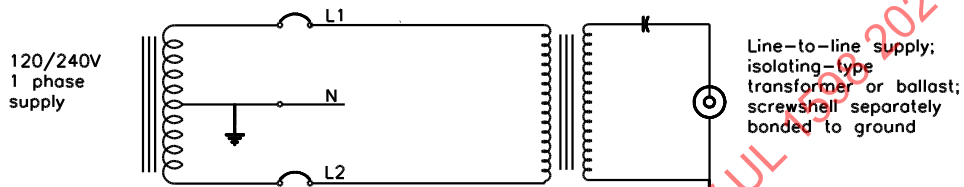
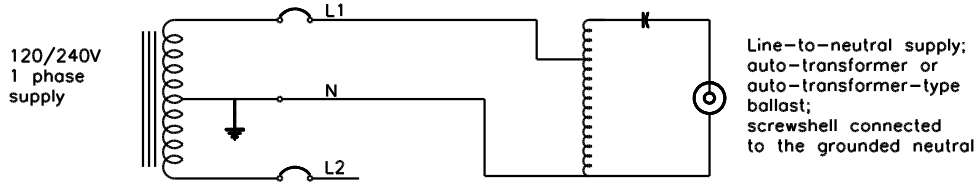
6.7.1.3 (USA) In the United States, when a luminaire intended to be connected to the line and neutral grounded conductors of a branch circuit, as shown in [Figure 6.7.1.1 \(USA\)](#), and provided with:

- a) an auto-transformer or an auto-transformer-type ballast, the screwshell of the lampholder shall be connected to the neutral grounded conductor, unless provision is made to protect against accidental contact with the lamp screwbase during insertion or removal of the lamp; or
- b) an isolating-type transformer or ballast, the screwshell of the lampholder shall not be required to be separately bonded to ground.

ULNORM.COM : Click to view the full PDF of UL 1598 2024

**Figure 6.7.1.1**  
**Ballast and transformer connection diagrams**

(See Clauses 6.7.1.3 and 6.7.1.4.)

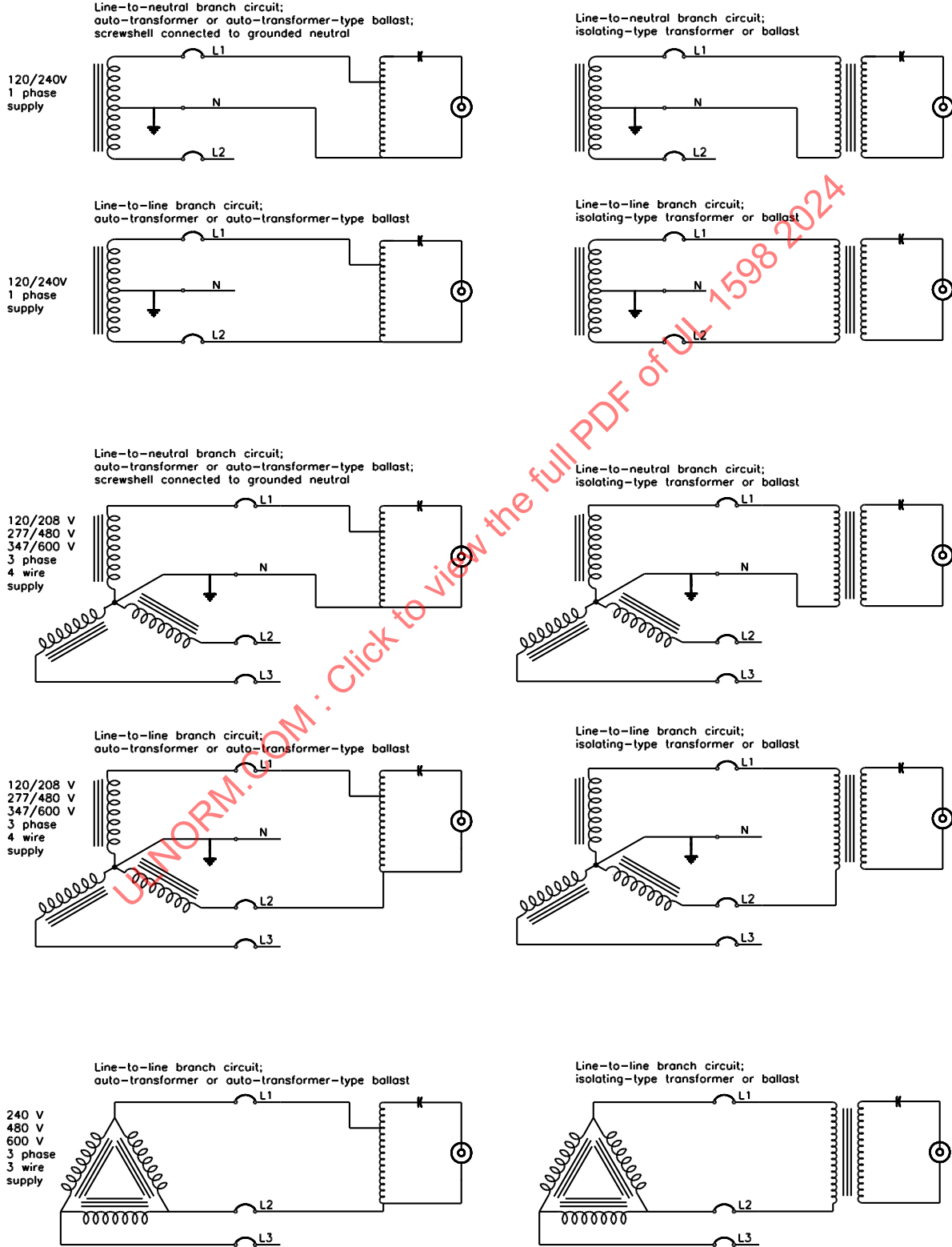


S3808A

Figure 6.7.1.1 (USA)

Ballast and transformer connection diagrams for United States

[See Clauses 6.7.1.3 (USA) and 6.7.1.4 (USA).]



UNORM.COM : Click to view the full PDF of UL 1598 2024

S3809B

6.7.1.4 When a luminaire intended to be connected to the line-to-line conductors of a branch circuit, as shown in [Figure 6.7.1.1](#), and is provided with:

- a) an auto-transformer or auto-transformer-type ballast, provision shall be made to protect against accidental contact with the lamp screwbase during insertion or removal of the lamp; or
- b) an isolating-type transformer or ballast, the screwshell of the lampholder shall be separately bonded to ground, unless provision is made to protect against accidental contact with the lamp screwbase during insertion or removal of the lamp.

6.7.1.4 (USA) In the United States, when a luminaire intended to be connected to the line-to-line conductors of a branch circuit, as shown in [Figure 6.7.1.1 \(USA\)](#), and provided with:

- a) an auto-transformer or auto-transformer-type ballast, provision may be made to protect against accidental contact with the lamp screwbase during insertion or removal of the lamp; or
- b) an isolating-type transformer or ballast, the screwshell of the lampholder shall not be required to be separately bonded to ground.

6.7.1.5 Allowing the thermal test results of one HID ballast to represent other HID ballasts shall be acceptable, with the following exceptions:

- a) a metal halide or mercury vapor type shall not represent a high-pressure sodium type.
- b) a high pressure sodium type shall not represent a metal halide or mercury vapor type.
- c) a lower wattage shall not represent a higher wattage type.
- d) a ballast with one class insulation system shall not represent a ballast with a different class insulation system.
- e) for a ballast of other than the enclosed and potted type with a Class 105 insulation system, a ballast with a bench-test temperature shall not represent a ballast with a higher bench-test temperature.
- f) a ballast that is not thermally protected shall not represent a ballast whose thermal protector:
  - 1) is buried within the ballast and has a temperature rating of less than the rating of the ballast system; or
  - 2) is located on the ballast core or under the wrap of an open coil and has a temperature rating of less than 90 °C for a Class 105 system, 110 °C for a Class 130 system, or 150 °C for a Class 180 system.

6.7.1.6 The isolated low voltage secondary output terminals of a power source shall not be bonded to ground unless the power source has been investigated and found not to present a risk of electric shock when bonded to ground.

## 6.7.2 Luminaires with remote ballasts or transformers

6.7.2.1 A luminaire designed for use with a remote ballast or transformer and not provided with integral leads shall be provided with a means for terminating the ballast or transformer leads inside the luminaire.

6.7.2.2 A luminaire designed for use with a remotely mounted ballast or transformer shall be thermally protected if it is of incandescent or HID type and is intended for recessed mounting.

6.7.2.3 A luminaire designed for use with a remote ballast or transformer shall be marked with the watts and lamp type in accordance with [Table 20.1.1](#), Item 1.42.

6.7.2.4 A luminaire designed for use with a remote ballast or transformer and required to be connected to secondary circuit conductors rated higher than 60 °C shall be marked to indicate the minimum acceptable temperature rating of the secondary conductors in accordance with [Table 20.1.1](#), Item 1.1.

## 6.8 Capacitors

6.8.1 A capacitor, other than the type specified in Clause [6.8.2](#), shall be rated for the appropriate voltage and the maximum available fault current (AFC) to which it can be subjected, as follows:

- a) a value of 10 000 A minimum when connected directly across the branch circuit;
- b) a value of 200 A minimum when connected in series with a ballast coil; or
- c) the maximum current available to the capacitor under capacitor short-circuit condition, as determined by investigation.

6.8.2 A dry metallized-film capacitor operating at a maximum of 330 V shall not be required to have a maximum available fault current rating.

6.8.3 A luminaire incorporating a capacitor as a component separate from the ballast shall:

- a) have a maximum rating of 0.06 µF and a maximum operating potential of 500 V peak; or
- b) provide means to discharge the capacitor within 1 min after removal of the capacitor voltage, in accordance with Clauses [6.8.4](#) to [6.8.6](#).

6.8.4 The means to discharge the capacitor may consist of a bleeder resistor or a closed loop of the circuit that is not opened by lamp removal or operation of a switch, fuse, or similar device.

6.8.5 The voltage across the capacitor terminals at the end of 1 minute shall be reduced to a value of 50 V or less, and the energy stored shall be less than 20 J, as determined by the equation:

$$J = 5 \times 10^{-7} CV^2$$

where:

J = the energy stored, J

C = the capacitor rating, µF

V = the capacitor peak voltage, V

6.8.6 The maximum value of a bleeder resistor shall be determined by the equation:

$$R = \frac{K}{C}$$

where:

R = the resistance value, MΩ

K = the resistor factor determined from [Table 6.8.1](#)

C = the capacitor rating,  $\mu\text{F}$

**Table 6.8.1**  
**Bleeder resistor factor (K)**

(See Clause [6.8.6](#).)

Capacitor voltage		Factor (K)
RMS volts	Peak volts	
0 – 70	0 – 100	85
71 – 78	101 – 110	76
79 – 85	111 – 120	70
86 – 92	121 – 130	63
93 – 99	131 – 140	55
100 – 106	141 – 150	54
107 – 120	151 – 170	50
121 – 141	171 – 200	44
142 – 169	201 – 240	39
170 – 197	241 – 280	35
198 – 230	281 – 325	32
231 – 265	326 – 375	30
266 – 318	376 – 450	27
319 – 353	451 – 500	26
354 – 495	501 – 700	23
496 – 707	701 – 1000	19

NOTE For a transformer-type ballast, the voltage value to be applied according to this table is the rms voltage rating of the capacitor as specified on the ballast.

6.8.7 An oil-filled capacitor shall be provided with an expansion spacing between any luminaire part and the capacitor terminals in accordance with Clause [6.8.8](#), unless marked otherwise on the capacitor.

6.8.8 In addition to the electrical spacing required in Clause [6.12](#), the minimum expansion spacing perpendicular to the capacitor terminal shall be:

- a) 11 mm (0.44 in) for a maximum of 300 V; or
- b) 13 mm (0.50 in) for a voltage more than 300 V.

## 6.9 Conductors and cords

6.9.1 Current-carrying conductors shall be copper, copper alloy, or nickel alloy.

6.9.2 (CAN) In Canada, conductors shall be minimum 18 AWG, except as specified in Clause [6.9.3](#), and shall be rated for the voltage, current, temperature, and condition of service to which they will be subjected, in accordance with [Table 6.9.1 \(CAN\)](#).

**Table 6.9.1 (CAN)**  
**CEC conditions of use and conductor temperature ratings for flexible cords and equipment wires**

(See Clauses [6.9.2](#) (CAN), [6.14.3.2](#), and [6.14.3.3](#).)

Location	Usage	Description	Type	Rating, Volts	Temp. °C	Notes			
Dry	Not Hard Usage	Equipment Wire	GTF	600	125	1			
Dry or Damp	Not Hard Usage	Flexible Cord	HPN	300	90	2			
			SPT-1	300	60				
			SPT-1	300	105				
			SPT-2	300	60				
			SPT-2	300	105				
			SPT-3	300	60				
			SPT-3	300	105				
			SV	300	60				
			SVO	300	60				
			SVT	300	60				
			SVT	300	105				
			Equipment Wire		CL751		300	75	1
					CL901		600	90	
	CL1051	300			105				
	CL1251	600			125				
	CL1251-R3	600			150				
	CL1502	600			150				
	REW (0.015)	300			105				
	REW (0.030)	600			105				
	SEW-1	300			200				
	SEWF-1	300			150				
	SEW-2	600			200				
	SEWF-2	600			150				
	TEW	600			105				
	TEWN	600			105				
	TR-32	600	105	1 & 2					
	TRB-32	600	105	1 & 2					
TR-64	600	105	1						
TRB-64	600	105	1						
For Hard Usage	Flexible Cord	HSJO	300	90	2				
		SJ	300	60					
		SJO	300	60					
		SJT	300	60					
		SJT	300	105					
For Extra Hard Usage	Flexible Cord	S	600	60	2				
		SO	600	60					

**Table 6.9.1 (CAN) Continued on Next Page**

Table 6.9.1 (CAN) Continued

Location	Usage	Description	Type	Rating, Volts	Temp. °C	Notes
			ST	600	60	
			ST	600	105	
Dry or Damp or Wet	Not for Hard Usage	Flexible Cord	CXWT	300	60	
			CXWT	600	60	
			PXWT	300	60	
	For Hard Usage	Flexible Cord	SJOW	300	60	
			SJTW	300	60	2
			SJTW	300	105	
	For Extra Hard Usage	Flexible Cord	SOW	600	60	
			STW	600	60	2
			STW	600	105	
NOTES						
1 A voltage of 1 000 V is permitted when the current is limited by a transformer, reactor, or resistor.						
2 Temperature rating is limited to 60 °C when exposed to oil.						
3 A temperature rating of 250 °C is permitted when the conductor is nickel or nickel-plated copper.						

6.9.2 (USA) In the United States, conductors shall be minimum 18 AWG, except as specified in Clause 6.9.3, and shall be rated for the voltage, current, temperature, and condition of service to which they will be subjected, in accordance with [Table 6.9.2 \(USA\)](#) and [Table 6.9.3 \(USA\)](#).

**Table 6.9.2 (USA)**  
**NEC temperature and voltage ratings of flexible cords and equipment wire**

(See Clauses [6.9.2 \(USA\)](#), [6.14.3.2](#), and [6.14.3.3](#).)

Location	Usage	Description	Type	Rating, V	Temp. °C	Notes
Dry		Equipment wire	FEPW	600	75	
			PFAH	600	250	
			RH	600	75	
			RHH	600	90	
			T	600	60	
			TFE	600	250	
			THHN	600	90	
			THHW	600	90	
			Z	600	90	2
			ZW	600	90	2
Dry	Not hard usage	Flexible cord	C	300	60	
			PD	300	60	
Dry or damp		Equipment wire	FFH-1	300	75	
			FFH-2	600	75	
			KF-2	600	200	

Table 6.9.2 (USA) Continued on Next Page

**Table 6.9.2 (USA) Continued**

Location	Usage	Description	Type	Rating, V	Temp. °C	Notes
			KFF-1	300	200	
			KFF-2	600	200	
			HF	600	150	
			HF-1	300	200	
			HFF	600	150	
			PAF	600	250	
			PAFF	600	150	
			PF	600	200	
			PFF	600	150	
			PGF	600	200	
			PGFF	600	150	
			PTF	600	250	
			PTFF	600	150	
			RFH-1	300	75	
			RFH-2	600	75	
			RFHH-2	600	90	2
			RHH	600	90	2
			RHH-3	600	90	2
			SF-1	300	200	
			SF-2	600	200	
			SFF-1	300	150	
			SFF-2	600	150	
			TF	600	60	
			TFF	600	60	
			TFN	600	90	
			THHN	600	90	2
			XHHW	600	90	2
			XF	300	150	
			XFF	300	150	
			Z	600	90	2
			ZF	600	150	
			ZFF	600	150	
			ZHF	600	200	
			ZW	600	90	2
Dry or damp	Not hard usage	Flexible cord	HPW	300	90	2
	Extra-hard usage		S	600	60	
		S	600	75	1	
		SE	600	60		
		SE	600	75	1	
	Hard usage		SJ	300	75	1

**Table 6.9.2 (USA) Continued on Next Page**

Table 6.9.2 (USA) Continued

Location	Usage	Description	Type	Rating, V	Temp. °C	Notes
			SJE	300	75	1
			SJO	300	60	
			SJO	300	75	1
			SJOO	300	60	
			SJOO	300	75	1
			SJT	300	60	
			SJT	300	75	1
			SJT	300	90	1,2
			SJT	300	105	1,2
			SJTO	300	60	
			SJTOO	300	60	
	Not hard usage		SP-1	300	60	
			SP-2	300	60	
			SPE-1	300	60	
			SPE-1	300	75	1
			SPE-1	300	90	1,2
			SPE-1	300	105	1,2
			SPE-2	300	60	
			SPE-2	300	75	1
			SPE-2	300	90	1,2
			SPE-2	300	105	1,2
	Extra-hard usage		SO	600	60	
			SO	600	75	1
			SO	600	90	1,2
			SOO	600	60	
			SOO	600	75	1
			SOO	600	90	1,2
	Not hard usage		SPT-1	300	60	
			SPT-1	300	75	1
			SPT-1	300	90	1,2
			SPT-1	300	105	1,2
			SPT-2	300	60	
			SPT-2	300	90	1,2
			SPT-2	300	105	1,2
			SPT-3	300	60	
			SPT-3	300	75	1
			SPT-3	300	90	1,2
		SPT-3	300	105	1,2	
	Extra-hard usage		ST	600	60	
			ST	600	75	1

Table 6.9.2 (USA) Continued on Next Page

Table 6.9.2 (USA) Continued

Location	Usage	Description	Type	Rating, V	Temp. °C	Notes
			ST	600	90	1,2
			ST	600	105	1,2
			STO	600	60	
			STOO	600	60	
	Not hard usage		SV	300	60	
			SVE	300	60	
			SVO	300	60	
			SVO	300	90	1,2
			SVOO	300	60	
			SVOO	300	90	1,2
			SVT	300	60	
			SVT	300	75	1
			SVT	300	90	1,2
			SVT	300	105	1,2
			SVTO	300	60	
			SVTOO	300	60	
Dry, damp, or wet		Wire	RHW	600	75	
			RUW	600	60	
			THW	600	75	
			THWN	600	75	
			TW	600	60	
			XHHW	600	75	
			ZW	600	75	
Dry, damp, or wet	Same as specified for cord type under dry or damp	Flexible cord	Any if marked as specified in Note 3	As marked on cord	As marked on cord	2,3

NOTES:

- 1 The insulation temperature rating is marked on the surface of the flexible cord.
- 2 See Clause 6.9.7 for increasing the insulation temperature rating using sleeving.
- 3 Flexible cord that is suitable for use in a wet location is surface marked with a "W" or "Water Resistant".